

Nottinghamshire

Every Child Matters

Primary and Special School Headteachers' Conference 2008



Nottinghamshire
County Council

Children and Young People's Services

This presentation...

- promotes a shared vision of integrated services
- sets out the priority areas and updates on recent progress
- sets the tone for our new relationship with schools



Our Vision

We will work together to provide integrated services for all children and young people in Nottinghamshire aged 0-19 to improve their life chances and to help them maximise their potential



Integrated services can...

- deliver our vision through unified management, with
- an extensive range of choices and options, which are....
- linked together by clear signposting and common systems, provided by....
- staff who take a “whole customer” approach and recognise that...
- outcomes are the bottom line.

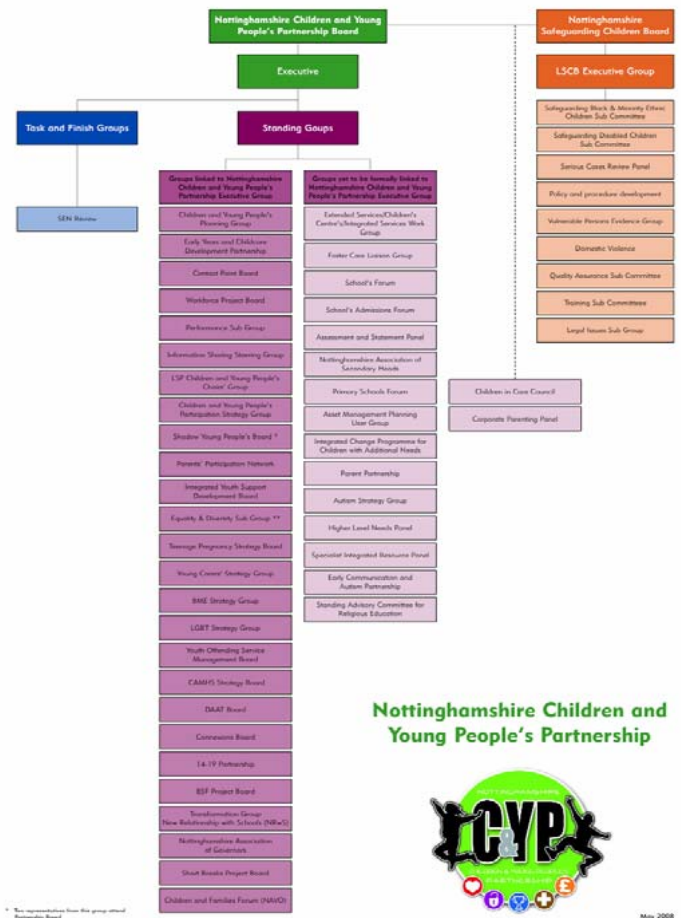


Our priority areas

- Build a shared vision and a single department culture and identity
 - Accelerate the integration of services and the rollout of locality support
 - Strengthen partnership and governance arrangements
 - Strengthen our relationship with schools
- so that we:**
- Improve outcomes for all children and young people



Our Partnership



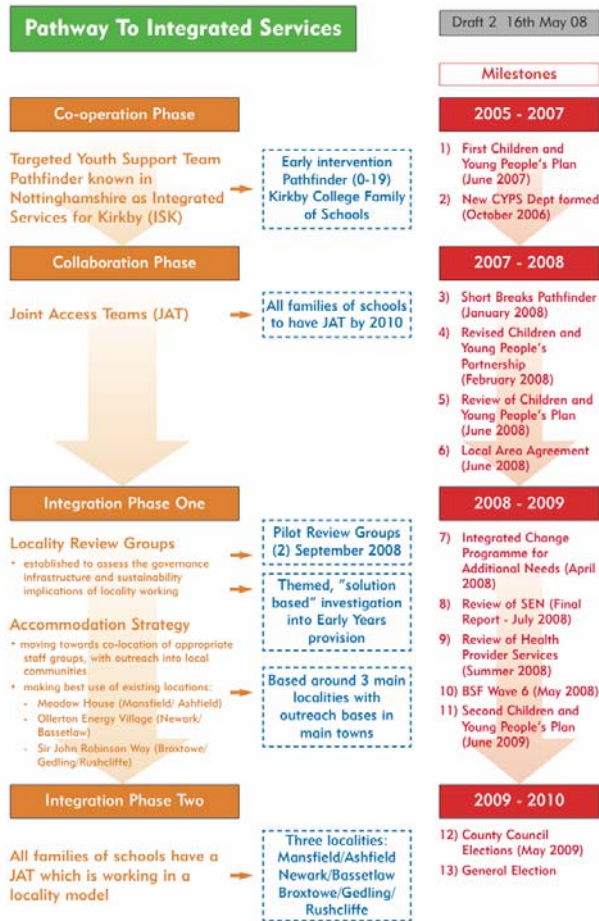
Nottinghamshire Children and Young People's Partnership



May 2008

* Not representative from the group listed Partnership Board
 ** This group is in development

Integrated Services



Relationship with schools

Excellence in teaching combined with enjoyment of learning

We want to help you:

- Develop the distinctive character of your school
- Take ownership of the curriculum
- Be creative and innovative
- Help every child develop their potential and enjoy learning



Relationship with schools

The current perception

- Lack of direction from Children and Young People's Services
- Uncertainty about the shape integrated services
- Patchy communication
- Lack of structured support for Headteachers
- Some excellent examples of support services but not consistent
- Feeling of a loss of emphasis on education



Relationship with schools

Where we want it to be

- Shared vision and understanding of success, with a timescale
- Effective communication, based on mutual needs
- Effective support structures and networks for Headteachers
- Effective, customer driven support services
- Enhanced levels of mutual trust and respect
- Education as a key driving force for integration



Relationship with schools

The vehicles for change

- A better understanding of your needs
- Increased opportunities for dialogue and challenge
- Seeing schools as the customer where we provide services to or through you
- Exploit quick wins
- Try to join up at a strategic level
- “Think global, act local”



Looking forward

- Let's agree that:
 - Our relationship is like any other - not perfect but will improve if we work at it
 - We need to get back to basics to make it better
 - If you tell us what you need, we'll try make it happen and we'll tell you if we can't
 - We can move forward together

anthony.may@nottscc.gov.uk

