

Nottinghamshire Pathway To Provision

Information Session



Parking lot

Ground rules



Ground rules for quality working

- **Acknowledge each other as equals**
- **Listen to each other**
- **Stay engaged and use the process**
- **No question is a silly question**
- **Minimise distractions (mobile phones off!)**
- **And...?**



Aims of the session

By the end of this session, participants will:

- **Be aware of the Pathway to Provision in its Nottinghamshire context**
- **Have an overview of the contents of the Pathway to Provision and its key processes**
- **Gain an understanding of the Joint Access Team & the Common Assessment Framework**
- **Understand the role of the Lead Professional**
- **Identify next steps in order to take this forward within your service**



What is the Pathway to Provision?

It is multi agency threshold guidance

- Defines levels of need for children and young people – 4 tiers
- Provides referral guidance
- Identifies where the Common Assessment Framework (CAF) fits in
- Clarifies the role of Joint Access Teams (JATs)
- Identifies “step up” and “step down” procedures to and from Children’s Social Care.

It applies across Nottinghamshire Children’s Trust



How does this effect me?

- A key principle is that **all** professionals working with and on behalf of children, young people and their families accept full responsibility for ensuring everything possible is being done to prevent unnecessary escalation of issues and difficulties and that a positive focus is maintained on ensuring the best outcomes.
(P4 Pathways to provision)



Delivering integrated services – Processes and tools

Early Intervention and Prevention Strategy



Integrated frontline service delivery

IMPROVED LIFE
CHANCES FOR
CHILDREN AND YOUNG
PEOPLE



Why do we need thresholds guidance?

Department for Education- Improvement Notice (June 2010)

- **“The Council must take action to have clear multi-agency thresholds in place, shared with and understood by all partners, in order for children and young people to access appropriate services and to ensure consistent and high quality referrals from other agencies.”**
- **“the implementation of the common assessment framework (CAF) has been slow to develop” (Ofsted report 21st May p8)**



The Nottinghamshire Context

Referrals to Children's Social Care, Looked After Children and children with child protection plans have raised significantly since July 2008.

- **Leading to....**

- ...Reduced capacity within Children's Social Care to work effectively with those children and young people whose needs are greatest

-£21million per annum additional cost pressures currently forecast

- ... Increased financial pressure on all other children's services, including universal, targeted and specialist ones



The Nottinghamshire Context

Our challenge is to...

Ensure children and young people's needs are met at the appropriate level by the **appropriate service(s) – as early as possible**. This will...

...Reduce contacts and referrals into Children's Social Care

...Reduce the resultant cost pressures

...Increase capacity within Children's Social Care

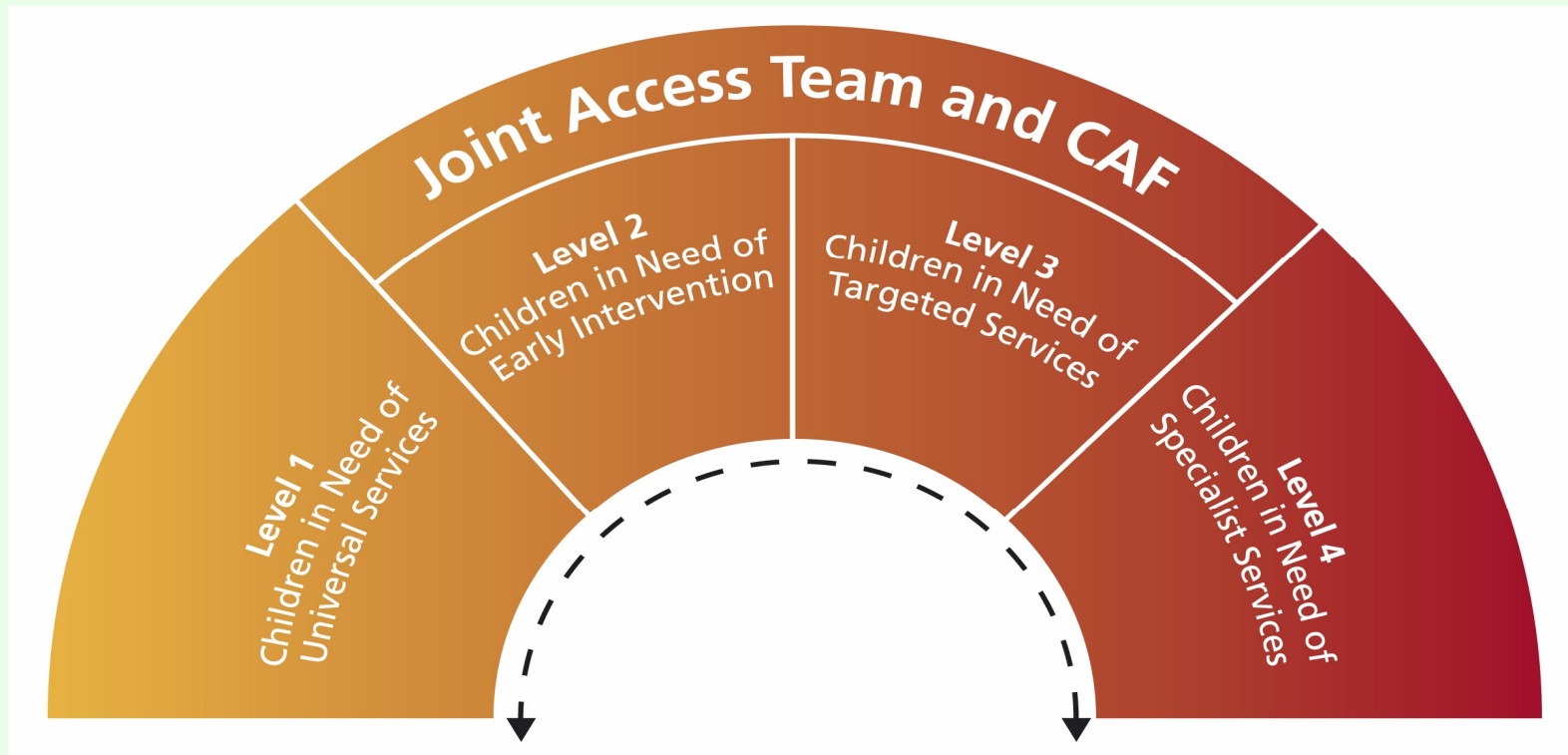
...Result in better outcomes for children and young people

Implementing the Pathway to Provision is a key way for us to achieve this



Pathway to Provision – Section A

The Nottinghamshire Continuum of Need



Pathway to Provision Handbook

- **Section B: Multi- Agency Thresholds**
Guidance including thresholds for Children's Social Care - it is not a replacement for professional judgement
- **Section C: Outline of Pathways to Provision**
Levels 1 – 4
- **Section D: Appendices x 5**
Including Step up, Step Down Processes for Children's Social Care



Activity: Threshold Indicators

Spend a few minutes familiarising yourself with the Assessment Framework and Levels 1 to 4 threshold indicators (Pages 5 – 11 of the Pathway to Provision Document)

In small groups consider what level you would place the case study at.

You may want to make notes of the process you go through in making your judgement



What is a JAT?

...JAT stands for Joint Access Team

...it is a way of working to deliver cohesive, planned, integrated services to improve outcomes for children and young people.

...it is about drawing together an inter-professional team to work together to deliver high quality, early intervention for children and young people within a family of schools.



Joint Access Teams

- ❑ **Joint Access Teams are Nottinghamshire's key mechanism for early intervention and prevention**
- ❑ **42 JATs covering 45 Families of Schools**
- ❑ **Referral to JATs use the first two pages of the Common Assessment Framework form**
- ❑ **JATs provide an opportunity for a single conversation about a child or young person (aged 0-19) with early intervention or targeted needs**
- ❑ **The core membership of the JATs are made up of practitioners from a range of agencies working within the geographical area of a family of schools**
- ❑ **JATs meet monthly**



What is a CAF?

.....CAF stands for Common Assessment Framework

Using the CAF will help us develop a common understanding of **strengths**, as well as needs and how to **work together** to meet them.

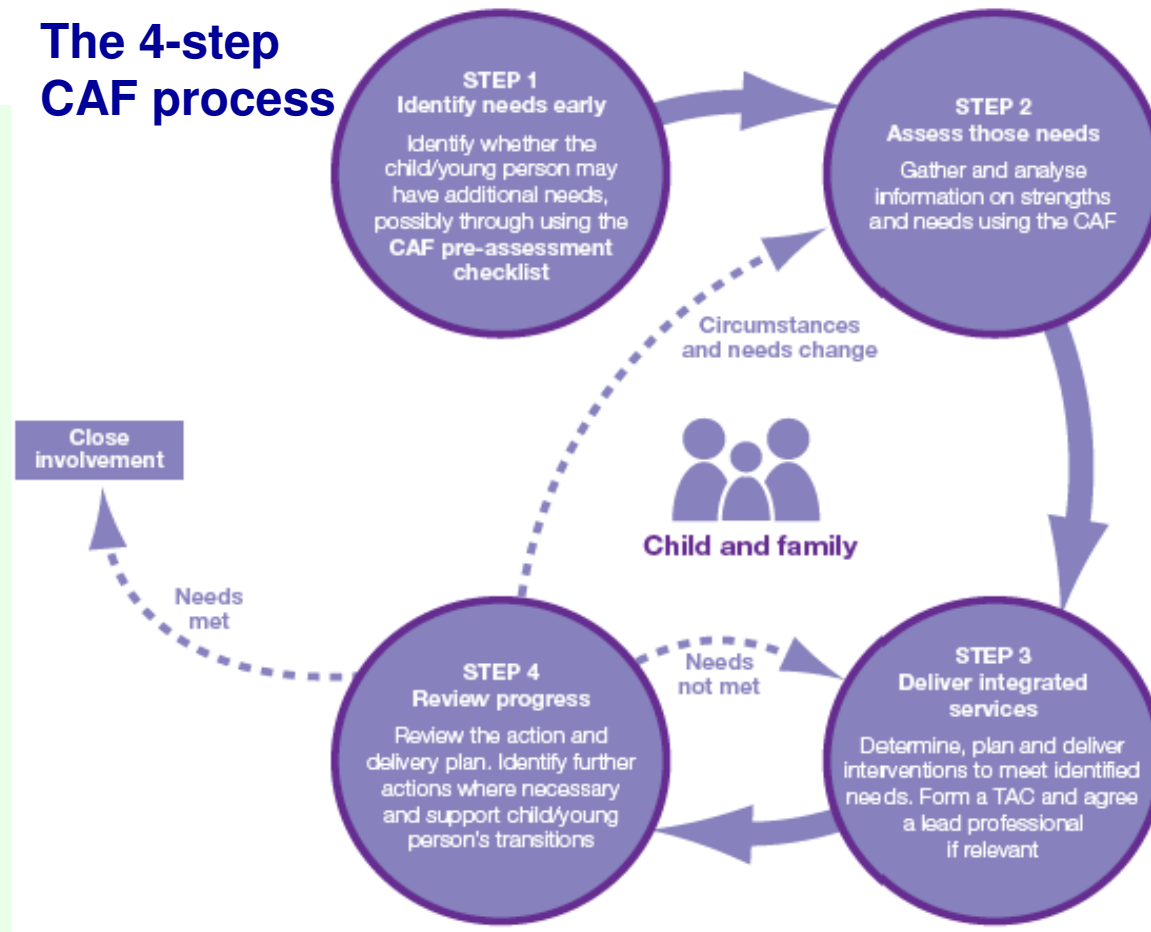
The CAF will help us assess children and young people's **additional needs** for services, **earlier** and more effectively.

The CAF is a **shared** assessment and planning framework to help us in our work with children, young people and families.



What does the CAF consist of?

The 4-step CAF process



Role of Lead Professional

Vision: All children and young people with additional needs who require support should experience a seamless and effective service in which one practitioner takes a lead role to ensure that services are co-ordinated, coherent and achieving intended outcomes

Core Functions

Act as a single point of contact for the child or family

Co-ordinate the delivery of actions agreed by the practitioners involved

Reduce overlap and inconsistency in the services received



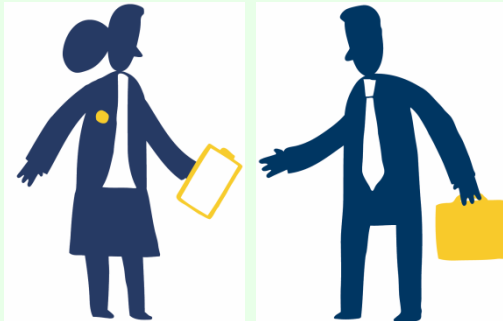
“Myth Busting” – the lead professional

Does not need any particular qualifications

The Lead Professional:

Is not automatically the person who initiated the CAF

Is not responsible or accountable for actions by other practitioners or services in the TAC



Does not automatically chair or minute the TAC meetings

Will not be expected to work outside their usual remit

Does not become responsible for the needs of the entire family

Does not have to be an ‘expert’ in everything



CAF & JAT Handbooks

- **Both Handbooks aim to support the consistency of practice across the County**
- **Provides key guidance on:**
 - **The JAT & CAF processes**
 - **The Role of the Lead Professional**
 - **Quality Assurance Framework for the CAF Process**
 - **The core membership of the JAT**
 - **Roles & responsibilities of JAT Chairs and others**
 - **Information sharing**
 - **The involvement of children, young people and their families in the JAT process**



Pathway to Provision – Section D

Appendix A - Step up, Step Down Processes for Children's Social Care

A. Step up processes:

- ❑ Expectation that most referrals are to be supported by a completed CAF
- ❑ Outcome of referral – accepted/not accepted

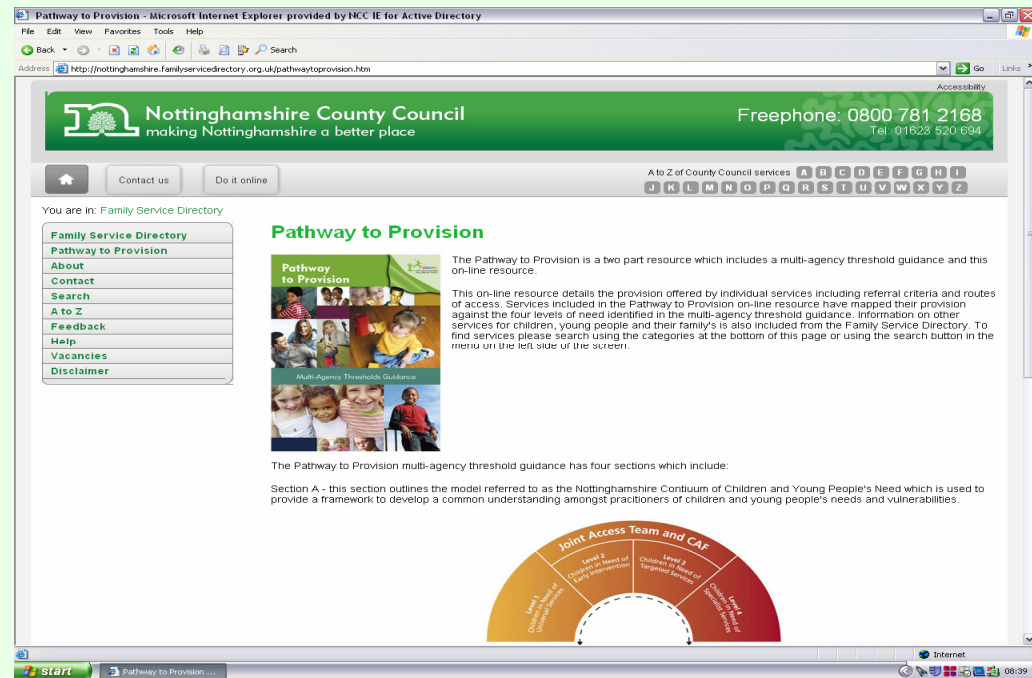
B. Step Down Processes

- ❑ Final Child in Need review meeting
- ❑ Information updated on the CAF
- ❑ Lead Professional identified or referred to the local Joint Access Team
- ❑ On-going coordinated support provided to the child & family



Pathway to Provision On-line Resource

- Provides information on:
 - Services provided at the four levels of need
 - Referral criteria and process
 - Any restrictions i.e. age; geography



Hosted by the Family Information Service (FIS) website:

www.nottinghamshire.gov.uk/fis

Tel: 0800 781 2168 or 01623 520694 - when calling from a mobile



Activity

Read the scenario and consider the following:

1. Using the Pathway to Provision, what level would you consider the child/young person on the Continuum of Need?
2. What else do we need to know?
3. How can we work together to meet this child's needs?
4. Which services may be involved?
5. Any other observations?



Next steps....

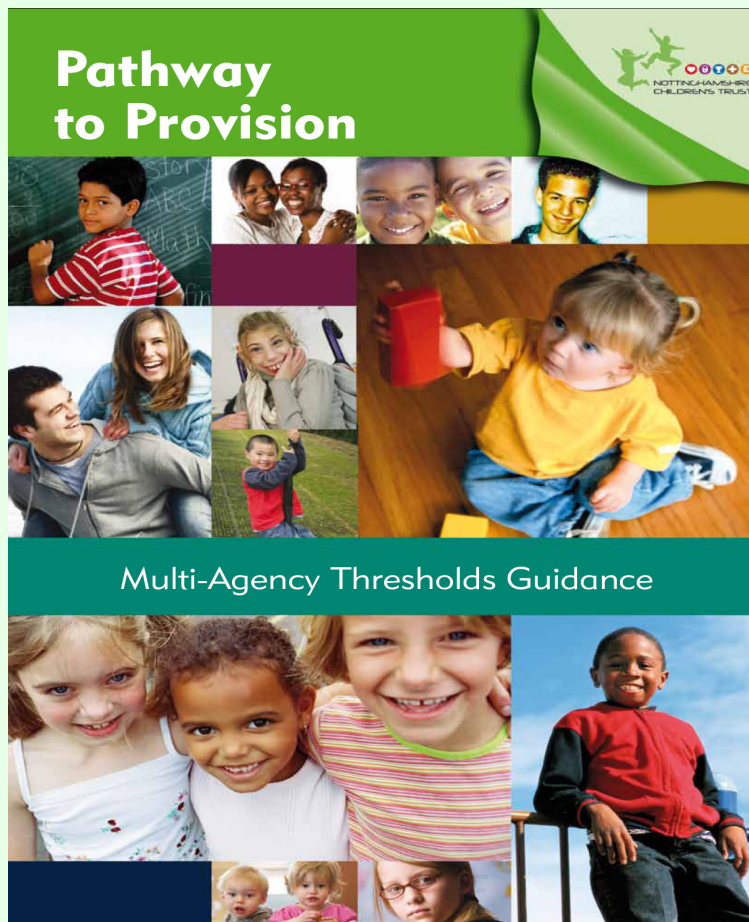
- **Three key learning points**
- **Three Priority Actions**
(to be completed within the next 3 months)
- **Additional identified learning needs**



Summary of Key Messages

- q **All services have signed up to this!**
- q **Most referrals to Children's Social Care will be supported by a completed CAF**
- q **JATs are the key mechanism for early intervention and prevention in Nottinghamshire**
- q **The CAF to be used as the common framework for assessment across all services**
- q **The Step up / Step down processes for Children's Social Care to be used across the Children's Trust**
- q **The consistent implementation across the County is essential**





www.nottinghamshire.gov.uk/pathwaytoprovision

pathwaytoprovision@nottsc.gov.uk



Useful Information

Local Links

www.nottinghamshire.gov.uk/pathwaytoprovision

www.nottinghamshire.gov.uk/commonassessmentframework

www.nottinghamshire.gov.uk/jointaccessteams

www.nottinghamshire.gov.uk/nscb

Families Information Service

www.nottinghamshire.gov.uk/fis

Tel: 0800 781 2168 or 01623 520694 - for people calling from a mobile

National Links

www.education.gov.uk

www.everychildmatters.gov.uk/integratedworking

www.cwdcouncil.org.uk/integrated-working

www.cwdcouncil.org.uk/sharestreet

