

Nottinghamshire Pathway To Provision

**Derek Higton, Service Director
Engagement & Enrichment**



Programme

9.00	Registration/Refreshments
9.30	Introductions
	Setting the context
	Pathway to Provision
10.30	Refreshments
10.50	Table top activity
	Plenary
	Individual action planning
12.20	Final questions and conclusions



This morning we will...

- Set the **Pathway to Provision** in its Nottinghamshire context
- Brief you on the contents & operation of the **Pathway to Provision**
- Use case studies/groupwork to explore how the **Pathway** operates
- Enable you to apply the **Pathway** in your professional setting



What is the Pathway to Provision?

It is multi agency threshold guidance

- Defines levels of need for children and young people – 4 tiers
- Provides referral guidance
- Identifies where the Common Assessment Framework (CAF) fits in
- Clarifies the role of Joint Access Teams (JATs)
- Identifies “step up” and “step down” procedures to and from Children’s Social Care.

It applies across Nottinghamshire Children’s Trust



Why do we need thresholds guidance?

Department for Education- Improvement Notice (June 2010)

- **“The Council must take action to have clear multi-agency thresholds in place, shared with and understood by all partners, in order for children and young people to access appropriate services and to ensure consistent and high quality referrals from other agencies.”**
- **“the implementation of the common assessment framework (CAF) has been slow to develop” (Ofsted report 21st May p8)**



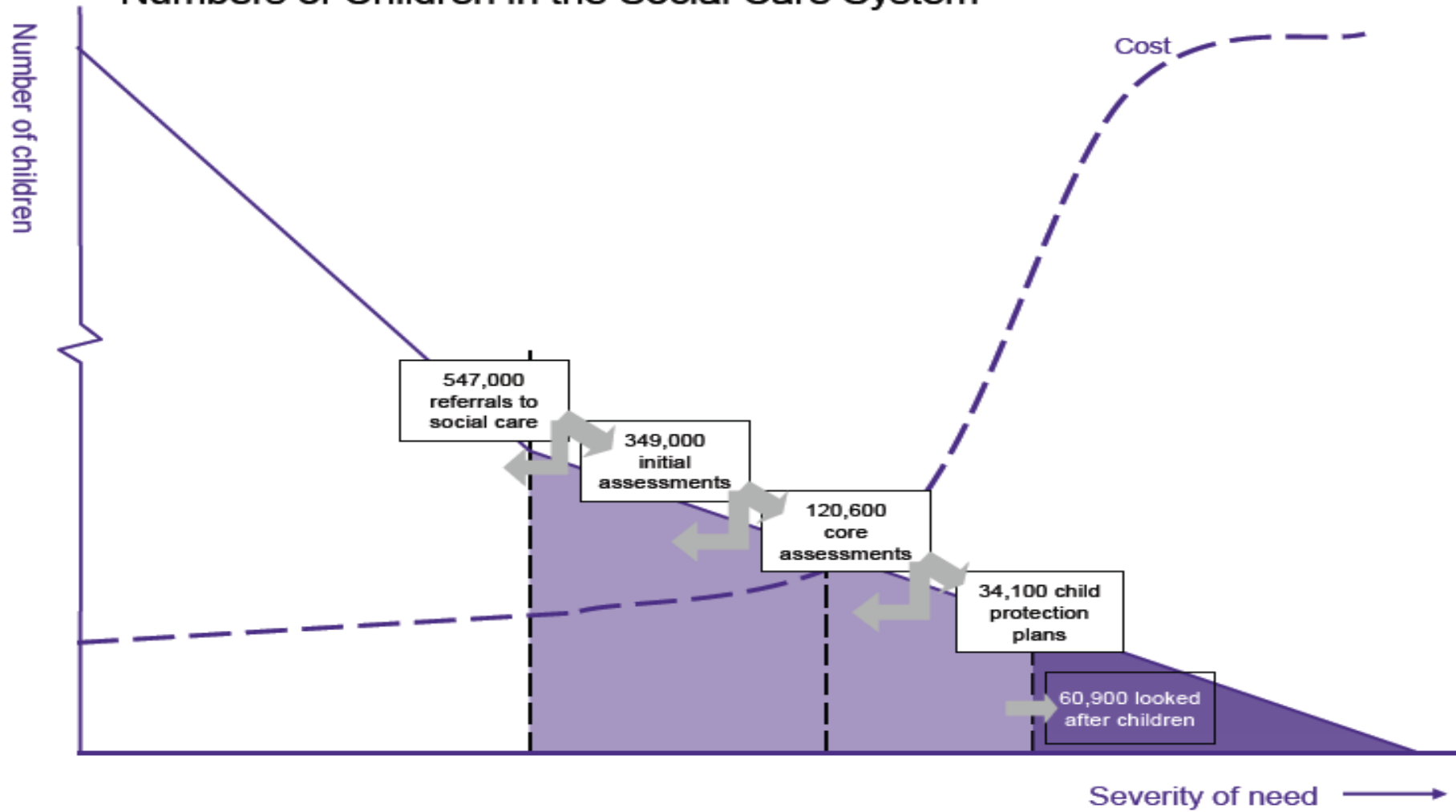
Why do we need thresholds guidance?

Department for Education- Improvement Notice (June 2010)

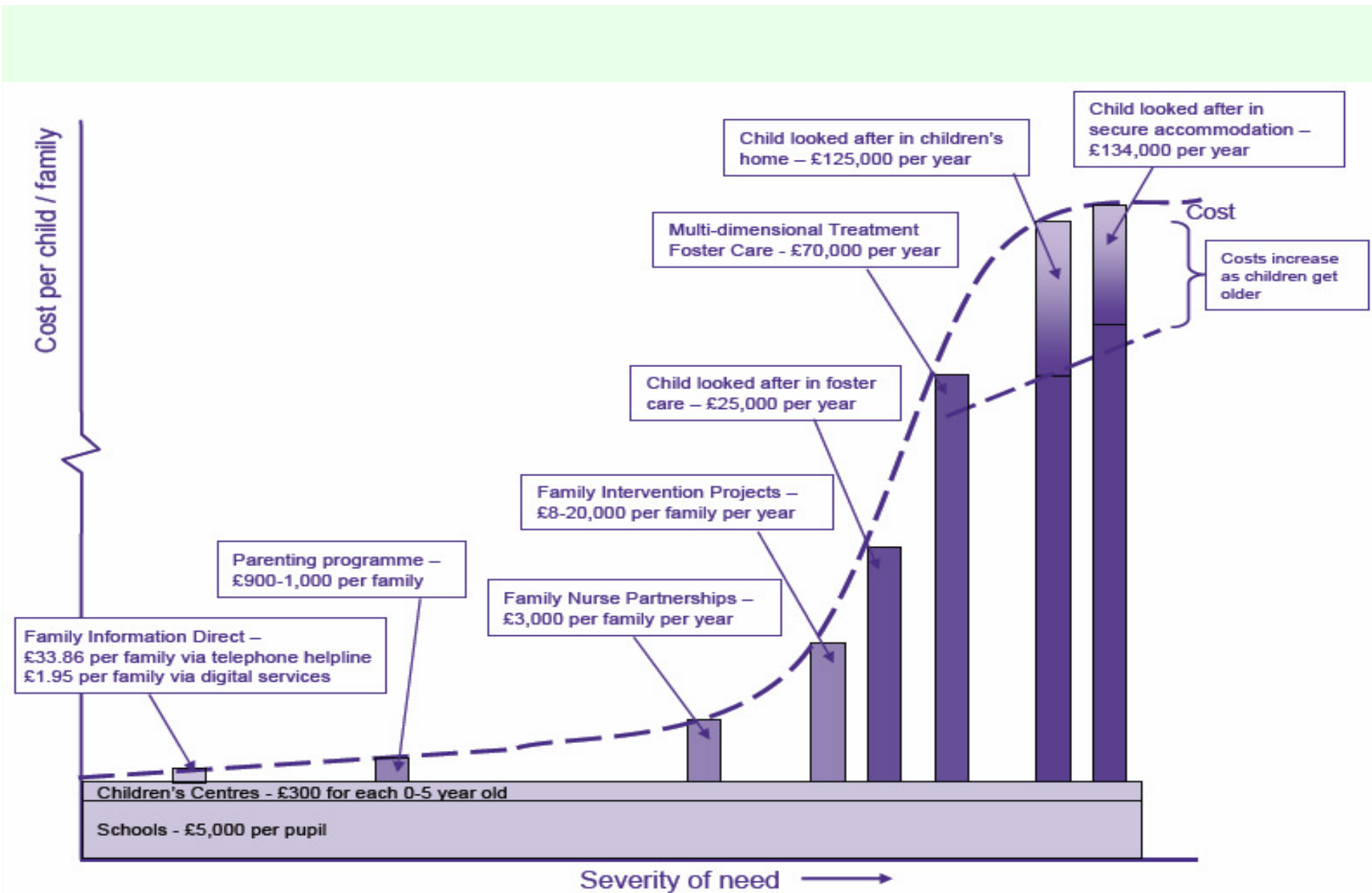
- **“The Council must take action to have clear multi-agency thresholds in place, shared with and understood by all partners, in order for children and young people to access appropriate services and to ensure consistent and high quality referrals from other agencies.”**
- **“the implementation of the common assessment framework (CAF) has been slow to develop” (Ofsted report 21st May p8)**



Numbers of Children in the Social Care System



National Context



National Context

The Nottinghamshire context

- **Referrals to Children's Social Care:**
 - 6,164 in year June 2008/09
 - 9,786 in year June 2009/10 (increase of 59%; national increase = 16%)
- **Looked After Children:**
 - 501 in July 2008
 - 623 in June 2010 (increase of 25%; national increase = 17%)
 - 19 Local Authorities saw an increase greater than 50% over the period.
- **Children with child protection plans:**
 - 398 in July 2008
 - 727 in June 2010 (increase of 83%; national increase 30% in the last year)



The Nottinghamshire Context

Referrals into Children's Social Care Sept. 2010

– Police:	229 (26%)
– Family/Friend/Neighbour:	139 (16%)
– Health:	128 (13%)
– Schools:	68 (8%)
– Legal Agency:	72 (8%)
– Other:	75 (8%)
– Other LA:	49 (6%)
– Notts CYPS:	43 (5%)
– Housing Depts:	21 (2%)
– Voluntary agency:	38 (4%)
– Self referral:	16 (2%)



The Nottinghamshire Context

CAFs initiated by local authority area 2009/10:

Lincolnshire	2205
Derbyshire	1207
Nottingham (City)	524
Nottinghamshire	487
Northamptonshire	355
Leicestershire	393

CAFs completed in Nottinghamshire in September: 81



The Nottinghamshire Context

- Greater increase in contacts/referrals into Children's Social Care than elsewhere.
- Leading to....
 -£18million per annum additional cost pressures currently forecast
 - ...Increased financial pressure on all other children's services, including universal, targeted and specialist ones
 - ...Reduced capacity within Children's Social Care to work effectively with those children and young people whose needs are greatest
- Our challenge is to...
 - Ensure children and young people's needs are met at the appropriate level by the appropriate service(s) – as early as possible. This will...
 - ...Reduce contacts and referrals into Children's Social Care
 - ...Reduce the resultant cost pressures
 - ...Increase capacity within Children's Social Care
 - ...Result in better outcomes for children and young people

Implementing the Pathway to Provision is a key way for us to achieve this



Pathway to Provision Implementation Programme

- A high level partnership team established to lead the roll-out and embed in practice
- District launch events in October
- Briefing sessions for key staff groups, September to December, i.e. Schools, Social Workers, Health providers, Police etc.
- An enforcement plan with appropriate performance management and quality assurance arrangements
- Development of an Early Intervention & Prevention Strategy for Nottinghamshire
- Senior level support from partners across the Children's Trust to embed pathway to provision



What will successful implementation of the Pathway to Provision achieve?

- **Effective Children's Services which improve children's life chances at lower cost**
- **Assessments completed at the right time, appropriate support provided at the earliest opportunity**
- **Reduction in demand on high cost specialist services**
- **A structure in place building on the JAT model to support early intervention, prevention and family support**



Pathway to Provision District Conferences

Nottinghamshire

Pathway To Provision

Chris Jones, Head of Service for Integrated Services

**Vicki Melling, CAF and Lead Professional
Development Manager**



Aims of the presentation

- ❑ **To provide an overview of the Joint Access Team & the Common Assessment Framework**
- ❑ **To provide an overview of the contents of the Pathway to Provision and its key processes**
- ❑ **To describe the support available for the implementation of the Pathway to Provision**



Joint Access Teams (1)

- ❑ **Joint Access Teams are Nottinghamshire's key mechanism for early intervention and prevention**
- ❑ **42 JATs covering 45 Families of Schools**
- ❑ **Referral to JATs use the first two pages of the Common Assessment Framework form**
- ❑ **JATs provide an opportunity for a single conversation about a child or young person (aged 0-19) with early intervention or targeted needs**
- ❑ **The core membership of the JATs are made up of practitioners from a range of agencies working within the geographical area of a family of schools**
- ❑ **JATs meet monthly**



Joint Access Teams (2)

Resulting from the single conversation at the JAT there will be:

- ❑ **Better understanding of the child's or young person's needs**
- ❑ **Advice, information and ideas generated by the team re next steps**
- ❑ **Clarity around the outcomes being sought**
- ❑ **Lead Professional identified**
- ❑ **Additional support services identified**
- ❑ **Next steps agreed**
- ❑ **Date set for progress review**
- ❑ **A link between input, output and outcomes**



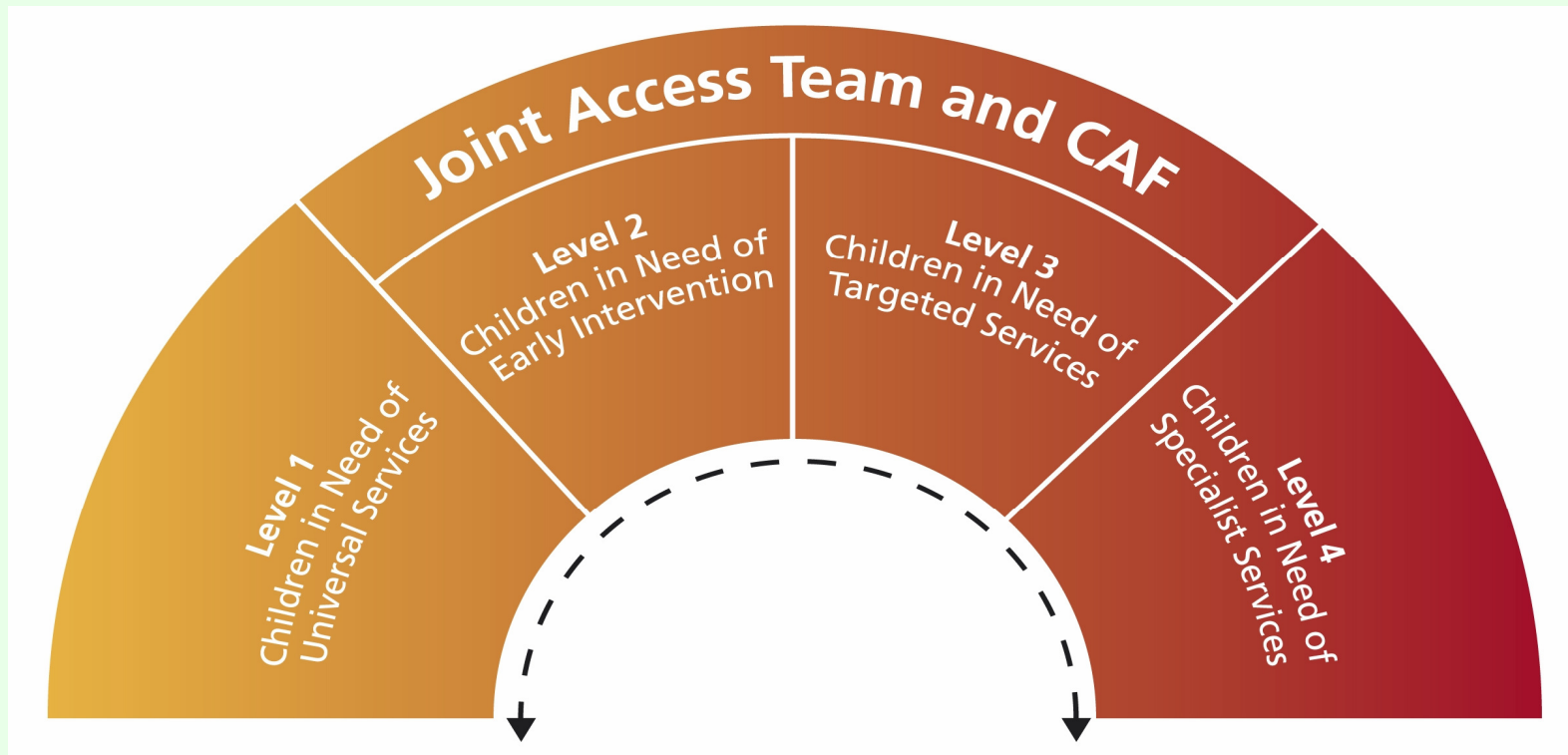
Common Assessment Framework (CAF)

- ❑ **An assessment process used across all services working with children and young people aged 0-19 (including pre-birth), especially at early intervention**
- ❑ **An holistic assessment that summarises a child or young person's strengths and goals and agrees action**
- ❑ **Completed with the child, young person or parent / carer**
- ❑ **Designed to be shared between services and as a starting point for planned and co-ordinated multi agency action**
- ❑ **Three stages to the CAF Process: preparation, discussion and delivery**
- ❑ **Nottinghamshire's CAF documentation**



Pathway to Provision – Section A

The Nottinghamshire Continuum of Need



Pathway to Provision – Section B

- ❑ **Threshold indicators for all 4 levels of need including for Children's Social Care**
- ❑ **Indicators grouped around the three domains of the assessment triangle**
- ❑ **Not a replacement for professional judgment**
- ❑ **Provides guidance on when to start the CAF process**
- ❑ **Provides guidance on when to refer to the Joint Access Team**



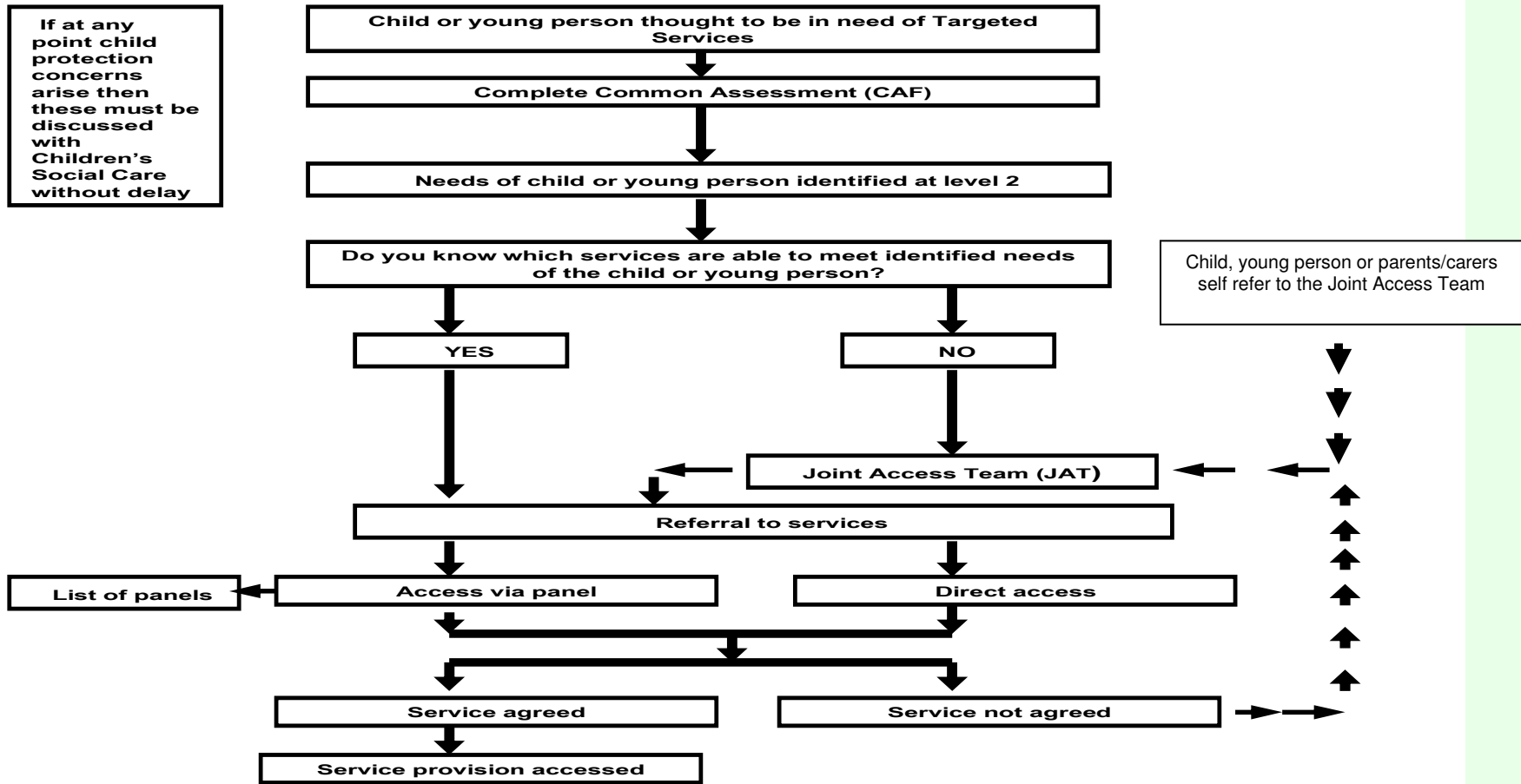
Pathway to Provision – Section C

- ❑ **Outlines of Pathways to Provision**
- ❑ **Level One to Four**
- ❑ **Self referral to services at Level One**
- ❑ **Self referral to the Joint Access Teams at Levels Two & Three**
- ❑ **Referrals via the Joint Access Team**
- ❑ **CYPS Panels at Levels 2 to 4**
- ❑ **Rationalisation of Pathways – unfinished business**



Outline of Pathway to Provision for Level 2/3 Early Intervention & Targeted Services

If at any point child protection concerns arise then these must be discussed with Children's Social Care without delay



Pathway to Provision – Section D

Appendix A (Step up, Step Down Processes for Children's Social Care)

A. Step up processes:

- ❑ Expectation that most referrals are to be supported by a completed CAF
- ❑ Referral accepted by Children's Social Care
- ❑ Referral not accepted by Children's Social Care
- ❑ Referral to the local Joint Access Team



Pathway to Provision – Section D

Appendix A (Step up, Step Down Processes for Children's Social Care)

B. Step Down Processes

- ❑ Final Child in Need review meeting
- ❑ Information updated on the CAF
- ❑ Lead Professional identified or referred to the local Joint Access Team
- ❑ On-going support provided to the child & family



Pathway to Provision On-line Resource

- ❑ Available from the 31st October 2010
- ❑ Hosted by the Family Information Service (FIS) website:
www.nottinghamshire.gov.uk/fis
- ❑ Provides information on:
 - Services provided at the four levels of need
 - How to make a referral?
 - Referral criteria
 - Forms to be completed
 - Any restrictions i.e. age; geography




Nottinghamshire County Council
 making Nottinghamshire a better place

Accessibility
 Freephone: 0800 781 2168
 Tel: 01623 520 694

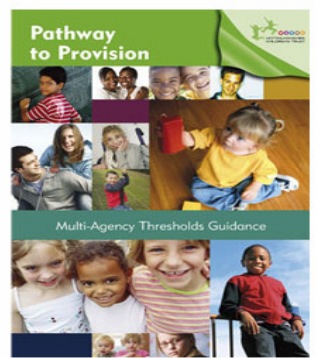
[Home](#) [Contact us](#) [Do it online](#)

A to Z of County Council services
 [A](#) [B](#) [C](#) [D](#) [E](#) [F](#) [G](#) [H](#) [I](#)
[J](#) [K](#) [L](#) [M](#) [N](#) [O](#) [P](#) [Q](#) [R](#) [S](#) [T](#) [U](#) [V](#) [W](#) [X](#) [Y](#) [Z](#)

You are in: Family Service Directory

- Family Service Directory**
- Pathway to Provision**
- About
- Contact
- Search
- A to Z
- Feedback
- Help
- Vacancies
- Disclaimer

Pathway to Provision



The Pathway to Provision is a two part resource which includes a multi-agency threshold guidance and this on-line resource.

This on-line resource details the provision offered by individual services including referral criteria and routes of access. Services included in the Pathway to Provision on-line resource have mapped their provision against the four levels of need identified in the multi-agency threshold guidance. Information on other services for children, young people and their family's is also included from the Family Service Directory. To find services please search using the categories at the bottom of this page or using the search button in the menu on the left side of the screen.

The Pathway to Provision multi-agency threshold guidance has four sections which include:

Section A - this section outlines the model referred to as the Nottinghamshire Continuum of Children and Young People's Need which is used to provide a framework to develop a common understanding amongst practitioners of children and young people's needs and vulnerabilities.



Support available to support the Pathway to Provision

- **CAF and JAT Handbooks provide the tools to support organisations to achieve the expectations of the Pathway to Provision**
- **Support structures include:**
 - **Joint Access Teams**
 - **Integrated Services Team**
 - **Frequently asked questions**

pathwaytoprovision@nottsc.gov.uk



CAF & JAT Handbooks

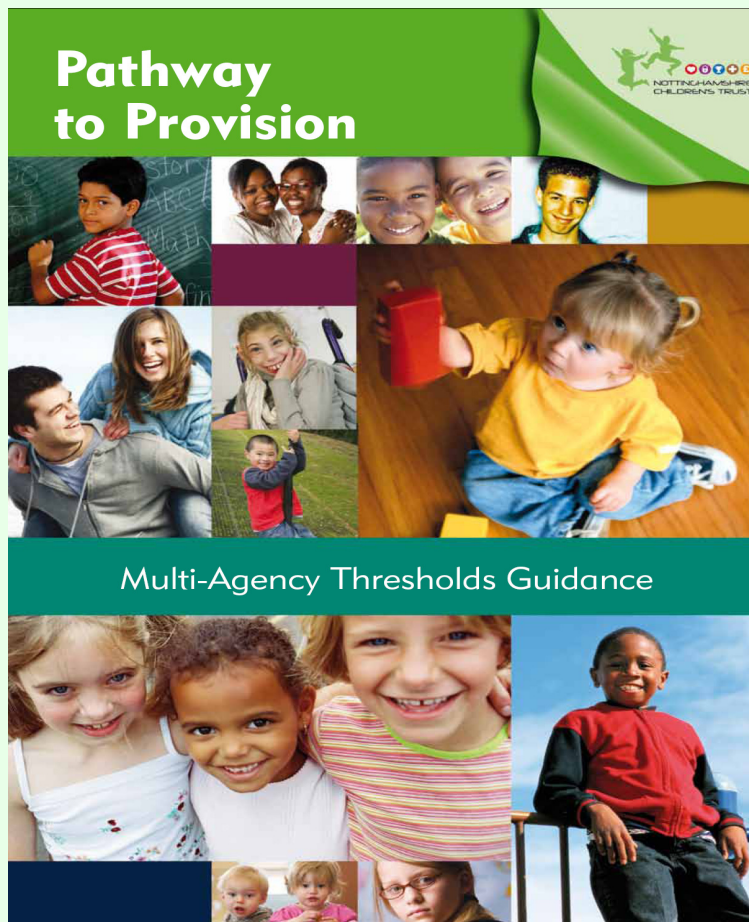
- **Both Handbooks aim to support the consistency of practice across the County**
- **Provides key guidance on:**
 - **The JAT & CAF processes**
 - **The Role of the Lead Professional**
 - **Quality Assurance Framework for the CAF Process**
 - **The core membership of the JAT**
 - **Roles & responsibilities of JAT Chairs and others**
 - **Information sharing**
 - **The involvement of children, young people and their families in the JAT process**



Summary of Key Messages

- ❑ **All services have signed up to this!**
- ❑ **Most referrals to Children's Social Care will be supported by a completed CAF**
- ❑ **JATs are the key mechanism for early intervention and prevention in Nottinghamshire**
- ❑ **The CAF to be used as the common framework for assessment across all services**
- ❑ **The Step up / Step down processes for Children's Social Care to be used across the Children's Trust**
- ❑ **The consistent implementation across the County is essential**





www.nottinghamshire.gov.uk/pathwaytoprovision

pathwaytoprovision@nottsc.gov.uk

