



# Children and Young People's Partnership Board

Key Social Care Indicators  
2008/2009

This report provides an overview based on the information provided to the DCSF for the year ending 31<sup>st</sup> March 2009 via the statutory CPR3 and SSDA 903 statistical returns. These returns provide the data for the key social care performance indicators which form part of the new National Indicator Set (NIS) contained within the Performance Framework for Local Authorities and Local Authority Partnerships.

The NIS indicators are a key component of the new Ofsted Performance Profile which is being used to inform the judgement on children's services for the Comprehensive Area Assessment.

## **Contents**

Referrals.....	2
Initial Assessments.....	2
Core Assessments.....	2
Section 47 Enquiries & Initial Child Protection Conferences.....	3
Children with Child Protection Plans by District and Locality.....	4
Age and Gender of children with CPP .....	5
Ethnicity of children with CPP .....	6
Stages of the Safeguarding Process .....	7
Key Safeguarding Performance Indicators .....	8
Key Performance Indicators for Looked After Children.....	9

## **Referrals**

	<b>2007/08</b>	<b>2008/09</b>
Total number of referrals of children who have been the subject of referral (including re-referral) during the year	6971	8464
Number of these children whose referral occurred within 12 months of previous referral	2067	2645
Percentage of referrals occurring within 12 months of previous referral	30%	31%

- The volume of referrals has increased by 21% over the two years.
- The percentage of re-referrals has increased by one percentage point over the two years.

## **Initial Assessments**

	<b>2007/08</b>	<b>2008/09</b>
Completed within 7 working days of referral	3808	3106
Other initial assessments completed	993	1675
Total number of initial assessments during year	4801	4781
Percentage of initial assessments completed within 7 working days of referral	79%	65%

- The volume of initial assessments carried out has reduced marginally by 0.4%
- The proportion of initial assessments completed within the 7 working days timescale has reduced from 79% to 65%. Pressures on the service resulting from post Haringey climate and increased demand is believed to have been the main influence in this reduction in performance.

## **Core Assessments**

	<b>2007/08</b>	<b>2008/09</b>
Completed within 35 working days of initial assessment	1175	560
Other core assessments completed	321	369
Total number of core assessments during year	1496	929
Percentage of initial assessments completed within 7 working days of referral	79%	60%

- There have been 37.9% less core assessments recorded this year

- The proportion of core assessments completed within the 35 working days timescale has reduced from 79% to 60%. The implementation of the Integrated Children's System is believed to have been a major factor in this reduction in performance.

**Section 47 enquiries and initial child protection conferences held during year**

	<b>2007/08</b>	<b>2008/09</b>
Number of children who were the subject of S.47 enquiries initiated during the year	812	891
Number of children who were the subject of ICPCs held during the year	531	537
Number of children whose ICPCs were held within 15 working days of the initiation of the S47 enquiries which led to the conference	460	459
Percentage ICPCs held within 15 working days of the initiation of the S47 enquiries which led to the conference	87%	85%

- The volume of Section 47 Enquiries initiated during the year has gone up by 9.7% compared with the previous year.
- There has been a slight increase by 1.1% in the number of children subject to Initial Child Protection Conferences.
- The proportion of ICPCs held within 15 working days of the initiation of the S47 enquiries which led to the conference has reduced very slightly but performance remains good at 85%.

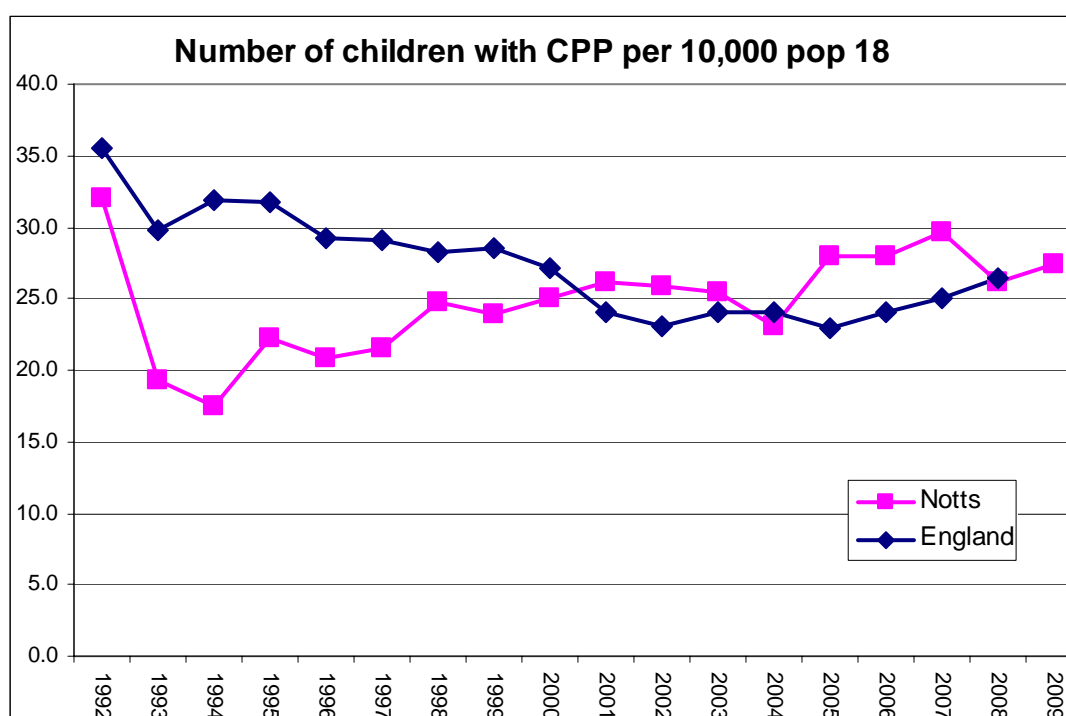
## Children and Young People with Child Protection Plans

### District and Locality Analysis

	Mar-07	Mar-08	Mar-09	% Change 2008-09
Ashfield	94	58	73	25.9%
Mansfield	87	75	83	10.7%
<b>MAN/ASHFIELD</b>	<b>181</b>	<b>133</b>	<b>156</b>	<b>17.3%</b>
Bassetlaw	93	77	67	-13.0%
Newark	60	101	78	-22.8%
<b>NEW/BASS</b>	<b>153</b>	<b>178</b>	<b>145</b>	<b>-18.5%</b>
Broxtowe	52	31	55	77.4%
Gedling	65	42	44	4.8%
Rushcliffe	22	18	31	72.2%
<b>BGR</b>	<b>139</b>	<b>91</b>	<b>130</b>	<b>42.9%</b>
Others	10	19	13	-31.6%
<b>TOTAL</b>	<b>483</b>	<b>421</b>	<b>444</b>	<b>+5.5%</b>

The number of children with child protection plans has risen this year which has brought the rate per 10,000 population aged 0-18 slightly above the latest available for England as a whole. We do not yet have the comparable national figure for 2009 but the graph below shows the likely convergence.

### National Comparison



## **Age and Gender of Children with Child Protection Plans**

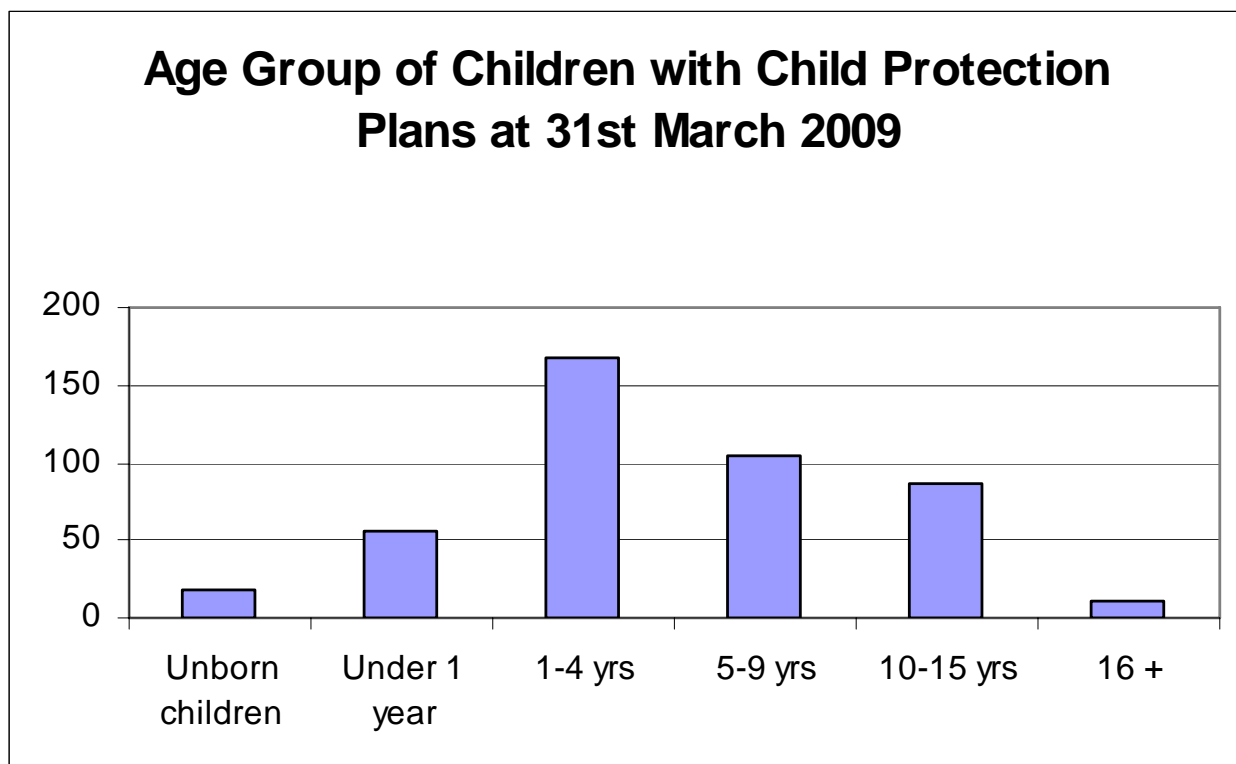
### **Gender**

	<b>n</b>	<b>%</b>
Male	208	46.8
Female	218	49.1
Unborn/Gender n/k	18	4.1
<b>TOTAL</b>	<b>444</b>	<b>100.0%</b>

### **Age Group**

	<b>n</b>	<b>%</b>
Unborn children	18	4.1
Aged under 1 year	56	12.6
Aged 1-4 years	168	37.8
Aged 5-9 years	104	23.4
Aged 10-15 years	87	19.6
16 and over	11	2.5
<b>TOTAL</b>	<b>444</b>	<b>100.0%</b>

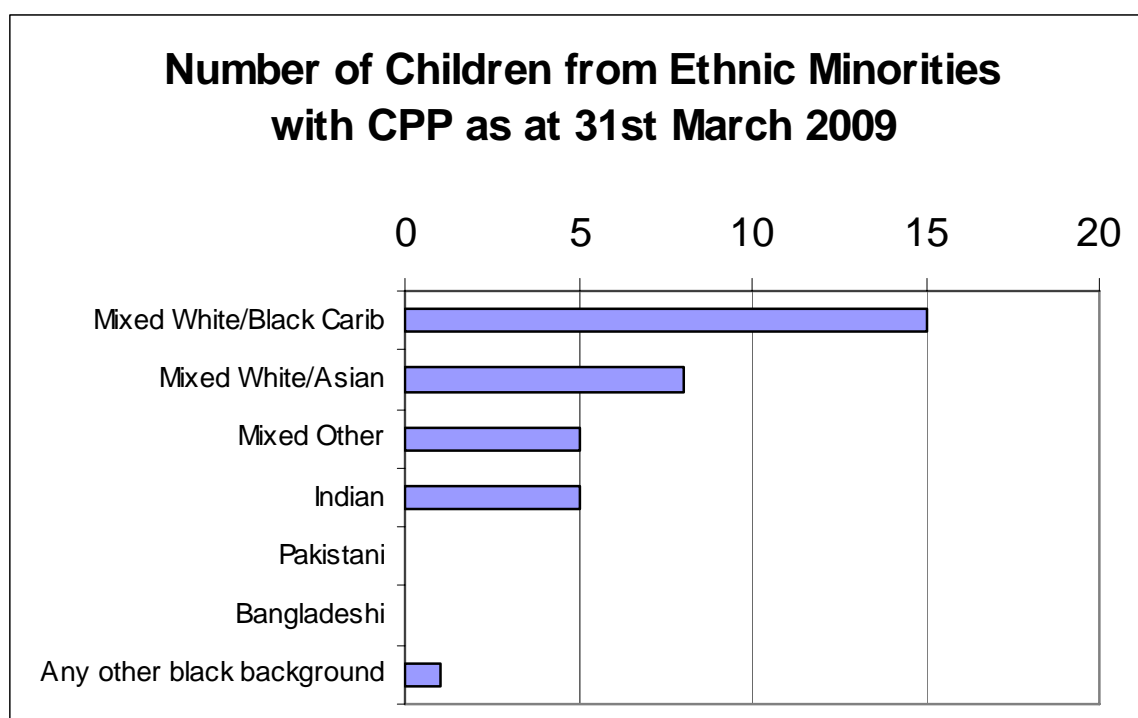
- The age profile of children with child protection plans is very similar to that for 2007/08 when 55.6% were aged under five.
- The equivalent figure for 2008/09 is 54.5% with 45.5% over five years, maintaining the slightly younger age profile seen in recent years.
- The largest single group is in the 1-4 year range.



## **Ethnic Origin of Children with CPP**

Ethnic Origin	31/03/2008		31/03/2009	
	n	%	n	%
White British	370	87.9%	379	85.4%
White Irish	1	0.2%	0	0.0%
Any other white background	10	2.4%	1	0.2%
White and Black Caribbean	2	0.5%	15	3.4%
White and Black African	0	0.0%	0	0.0%
White and Asian	3	0.7%	8	1.8%
Any other mixed background	20	4.8%	5	1.1%
Indian	1	0.2%	5	1.1%
Pakistani	3	0.7%	0	0.0%
Bangladeshi	1	0.2%	0	0.0%
Any other Asian background	3	0.7%	0	0.0%
Black Caribbean	0	0.0%	0	0.0%
Black African	0	0.0%	0	0.0%
Any other black background	0	0.0%	1	0.2%
Chinese	0	0.0%	0	0.0%
Any other ethnic group	0	0.0%	2	0.5%
Not known/unborn	7	1.7%	28	6.3%

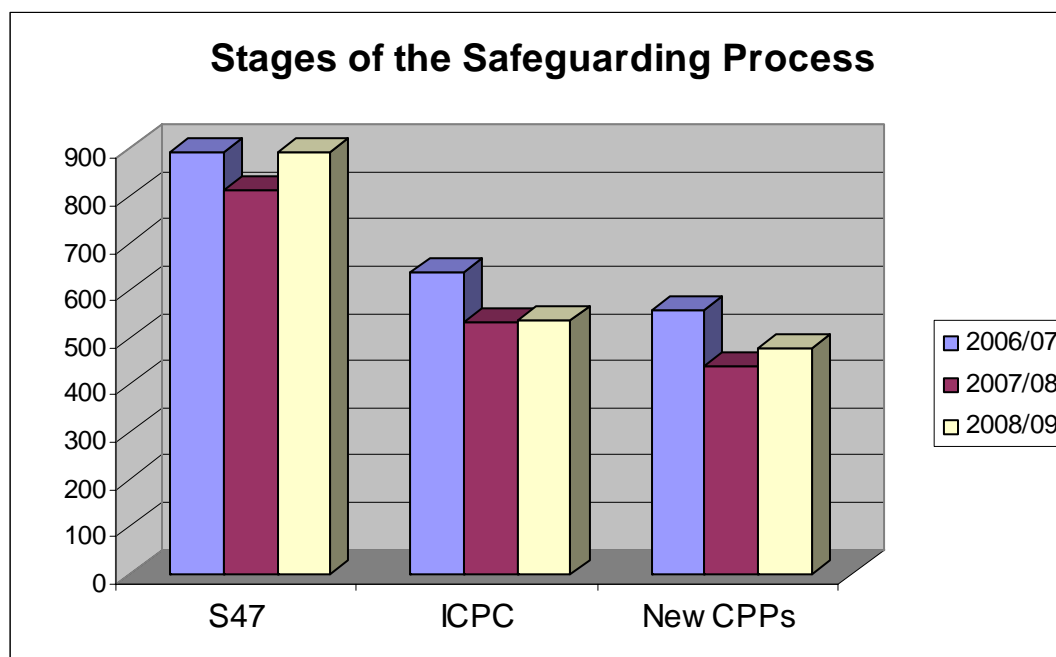
- The proportion of children on register from BME backgrounds has increased from 7.8% (2007/08) to 8.1% this year.
- This compares with 4% in the general child population of Nottinghamshire (2001 Census).
- The largest single group is those children who are recorded in the mixed white and black Caribbean ethnic origin group category.



## Stages of the Safeguarding Process

	2006/07	2007/08	2008/09
Number of children who were the subject of S.47 enquiries initiated during the year	893	812	891
Number of children who were the subject of Initial Child Protection Conferences held during the year	637	531	537
Number of children becoming subject to new child protection plans during the year	558	440	479

The bar chart shows increased levels of activity at the different stages of the safeguarding process this year compared to 2007/08, particularly in Section 47 enquiries and children being made subject to child protection plans.



## **Key Safeguarding Performance Indicators.**

The government's National Indicator Set for Local Authorities and Local Authority Partnerships contains six indicators which are directly drawn from the CPR3 return and illustrate performance in key areas of the safeguarding system. The tables below illustrate performance in these for the last two years.

### **National Indicators (NI)**

	<b>2007/08</b>	<b>2008/09</b>
<b>NI59: Initial assessments for children's social care carried out within 7 working days of referral</b>	<b>79.3%</b>	<b>65.0%</b>
<b>NI60: Core assessments for children's social care that were carried out within 35 working days of their commencement</b>	<b>78.5%</b>	<b>60.3%</b>
<b>NI64: Child Protection Plans lasting 2 years or more</b>	<b>7.2%</b>	<b>10.7%</b>
<b>NI65: Children becoming the subject of a Child Protection Plan for a second or subsequent time</b>	<b>16.4%</b>	<b>15.2%</b>
<b>NI67: Child protection cases which were reviewed within required timescales</b>	<b>100.0%</b>	<b>99.3%</b>
<b>NI68: Referrals to children's social care going on to initial assessment</b>	<b>68.9%</b>	<b>56.5%</b>

- The reduction in performance around assessment timescales has already been discussed.
- A slightly higher proportion of child protection plans took over two years to complete, but this is still within the acceptable range of performance. There has been a reduction in the proportion of children requiring a second or subsequent child protection plan.
- Almost all reviews were held within required timescales. The very slight reduction is accounted for by one case involving two siblings which was five days overdue.

## **Key Indicators for Looked After Children**

The government's National Indicator Set for Local Authorities and Local Authority Partnerships also contains six indicators which are directly drawn from the SSDA 903 return on looked after children. The tables below illustrate performance in these for the last two years and other key indicators by which performance is measured.

The return for year ending 31<sup>st</sup> March 2009 contains information on 491 looked after children compared with 474 at 31<sup>st</sup> March 2008. This represents a 3.6% increase over the year.

<b>National Indicators</b>	<b>2007/08</b>	<b>2008/09</b>
<b>NI 162: Stability of placements for CLA (Percentage having 3 or more placements in the year)</b>	<b>8.6%</b>	<b>5.9%</b>
<b>NI 161: Percentage of children placed for adoption within 12 months of agency decision to place for adoption, and who remained in that placement on adoption.</b>	<b>62.1%</b>	<b>51.6%</b>
<b>NI 163: Stability of CLA (Percentage of CLA for 2.5 years who were living in the same placement for at least 2 years, or are placed for adoption and their adoptive placement + previous placement lasted for at least 2 years.)</b>	<b>69.8%</b>	<b>70.7%</b>
<b>NI 166: CLA reviewed within required timescales</b>	<b>91.6%</b>	<b>96.5%</b>
<b>NI 147: Care leavers in suitable accommodation</b>	<b>72.1%</b>	<b>95.1%</b>
<b>NI 148: Care leavers in EET</b>	<b>60.5%</b>	<b>56.1%</b>

- The measures of stability for looked after children in terms of numbers of placements experienced and the length of placements (NI 162 and NI 163), both show further improvement from an already good position.
- A lower proportion of adoptive placements are achieved within 12 months of the agency decision to place for adoption (NI 161). However there has been an increase in the proportion of looked after children for whom adoption is achieved to 9.1% which compares favourably with the national picture (PAF C23 below).
- A further increase to 96.5% has been achieved in looked after children's reviews held on time.

- Care leavers in Employment, Education or Training (NI 148) has shown a reduction, and reflects the difficult economic circumstances of the last year. However there has been a considerable improvement in the proportion of care leavers judged to be in suitable accommodation (NI 147) to 95.1%.

<b>Other Key Indicators</b>	<b>2007/08</b>	<b>2008/09</b>
<b>PAF A2: Proportion of children leaving care with at least one GCSE/GNVQ</b>	<b>54.8%</b>	<b>57.9%</b>
<b>PAF B79 Proportion of CLA fostered or placed for adoption</b>	<b>85.9%</b>	<b>86.1%</b>
<b>PAF C23: Proportion of CLA adopted during year</b>	<b>7.7%</b>	<b>9.1%</b>
<b>PAF C63: Proportion of CLA communicating their views in their reviews</b>	<b>95.0%</b>	<b>94.8%</b>
<b>PAF C69: Proportion of new CLA placed 20+ miles from home</b>	<b>5.9%</b>	<b>11.5%</b>
<b>A2052SC: Proportion of CLA in residential accommodation</b>	<b>11.2%</b>	<b>11.3%</b>
<b>A2054SC: Proportion of CLA fostered by relatives or friends</b>	<b>7.4%</b>	<b>4.0%</b>
<b>A3073SC: Proportion of children leaving care with 5 or more GCSE at grades A*-C (or GNVQ equivalent)</b>	<b>8.9%</b>	<b>12.3%</b>

- There are some encouraging signs of improvements in the educational achievements of looked after children, but there is a considerable way to go in closing the gap with their counterparts.
- The fostering and adoption indicators show high levels of success in Nottinghamshire in placing children in family settings.
- The very high levels of engagement of children through communication of their views in reviews has been maintained.