



Nottinghamshire 14-19 and RPA Plan

Terry Laws
Roy Haynes

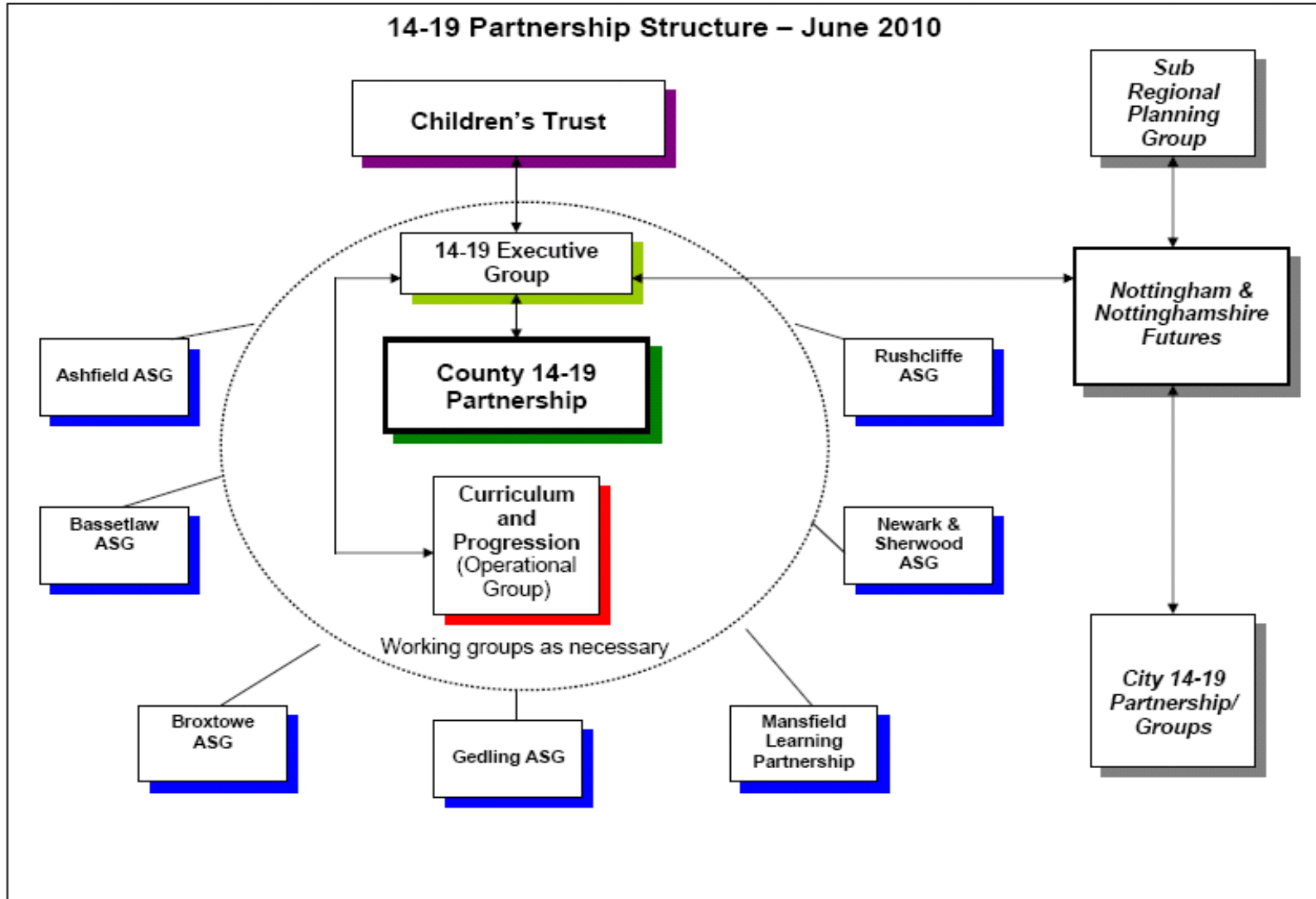


14-19 Plan

- We are required to have a 14-19 Plan
- Sets framework for following years commissioning
- Sets out plan for achieving 14-19 curriculum reform and Raising Participation Age
- Agreed by 14-19 Partnership
- Is a sub-set to CYPP and requires adoption by Children's Trust



14-19 Partnership Structure June 2010





Priorities

- Attainment at 16
- Attainment at 19
- Apprenticeships
- Participation



Priorities

- **Workforce development**
 - Increasing capacity to deliver new qualifications.
- **Targeted support for vulnerable learners**
 - Increasing attainment and improving progression opportunities.
- **Employer engagement**
 - To enhance planning & delivery of 'applied' qualifications
- **Information, advice and guidance**
 - Easily accessible, up-to-date, comprehensive & impartial



Issues Going Forward

- LAs new commissioning role
- Post 16 review
- Nottingham and Nottinghamshire Futures
- Emerging Government Policy
- Budgetary constraint
- New CYPP