

Commentary on charts

NB charts only show the non-PUA settlements

Charts - Scores against size. (vs size)

These charts demonstrate the spread of accessibility according to size of settlement for all themes and for each individually.

The spread and trend lines indicate where smaller settlements may have greater accessibility relative to larger settlements (as with retail, for example), or where many small settlements have poor accessibility (employment).

However, in some instances there is less of a relationship between size and accessibility. The best 'fit' trend line is for all themes together, and for employment, both over 0.7 where 1 is a perfect fit.

Charts - Scores of themes against average for all themes (vs all)

These charts compare how access to a particular theme scores against the settlement average for all the themes. If for that theme a particular settlement shows a score above the diagonal line that indicates the settlement scores comparatively well on that theme (for example in employment for Breadsall and Langar. Conversely a point below the line indicates that theme scores relatively less well for that settlement.

NB, These charts do not show that the settlement scores well or poorly in absolute terms, just relative to how it scores across the board, so for example Breadsall scores relatively well in employment terms (because of its accessibility to employment locations) but relatively poorly for accessibility to retail locations.

Identifying settlements and scores

A particular settlement may be identified in by selecting the settlement from a list and noting the size (delivery points) and the score for the theme of interest - identify that point on the chart.

Alternatively a particular point of interest on the chart in a spreadsheet can be identified by hovering the mouse point over it; the values for that point will be displayed and the name can be read from any spreadsheet of scores.

Study to assess the accessibility of settlements across Greater Nottingham (2009)

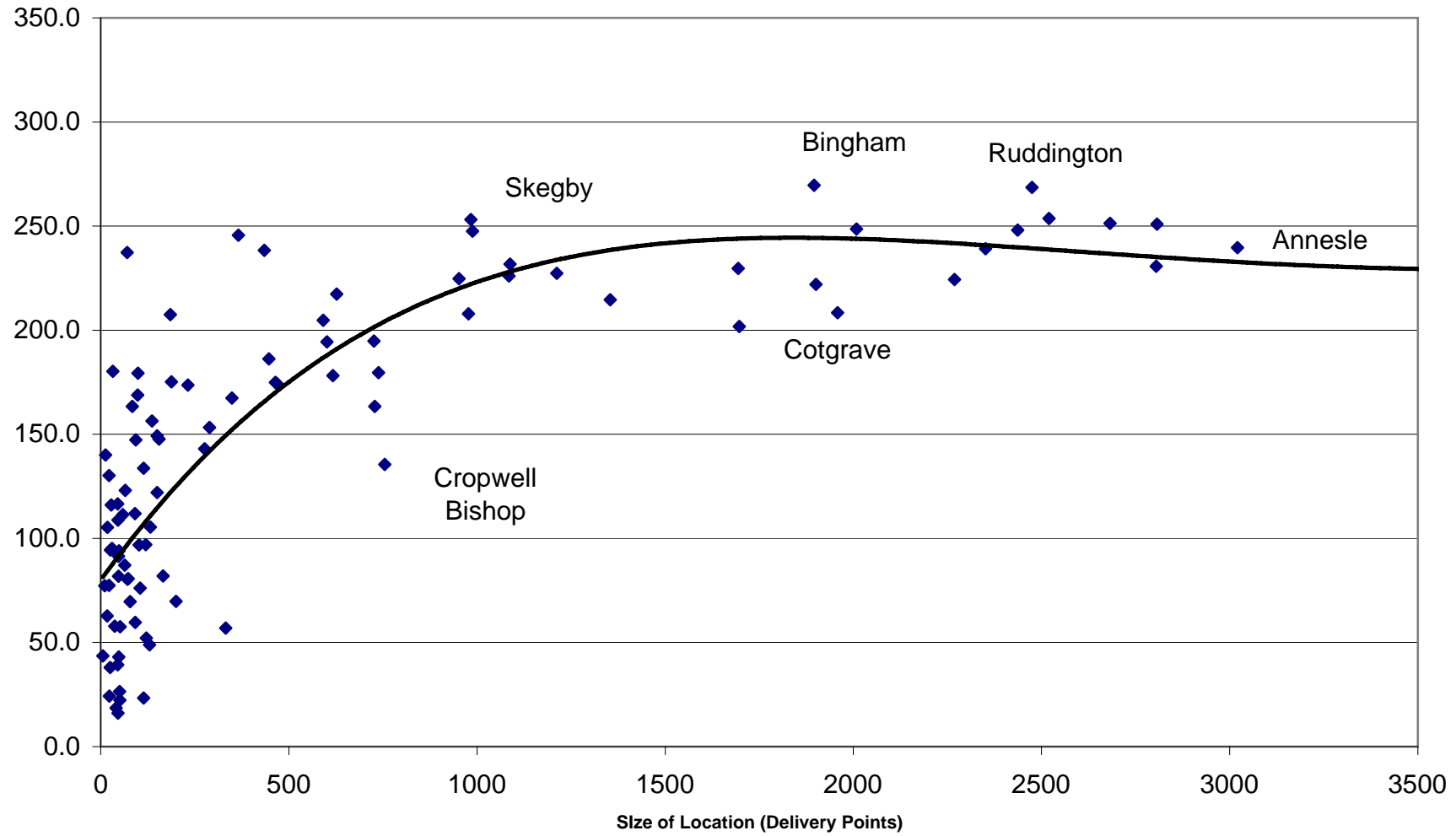
Nottinghamshire County Council

For Details contact

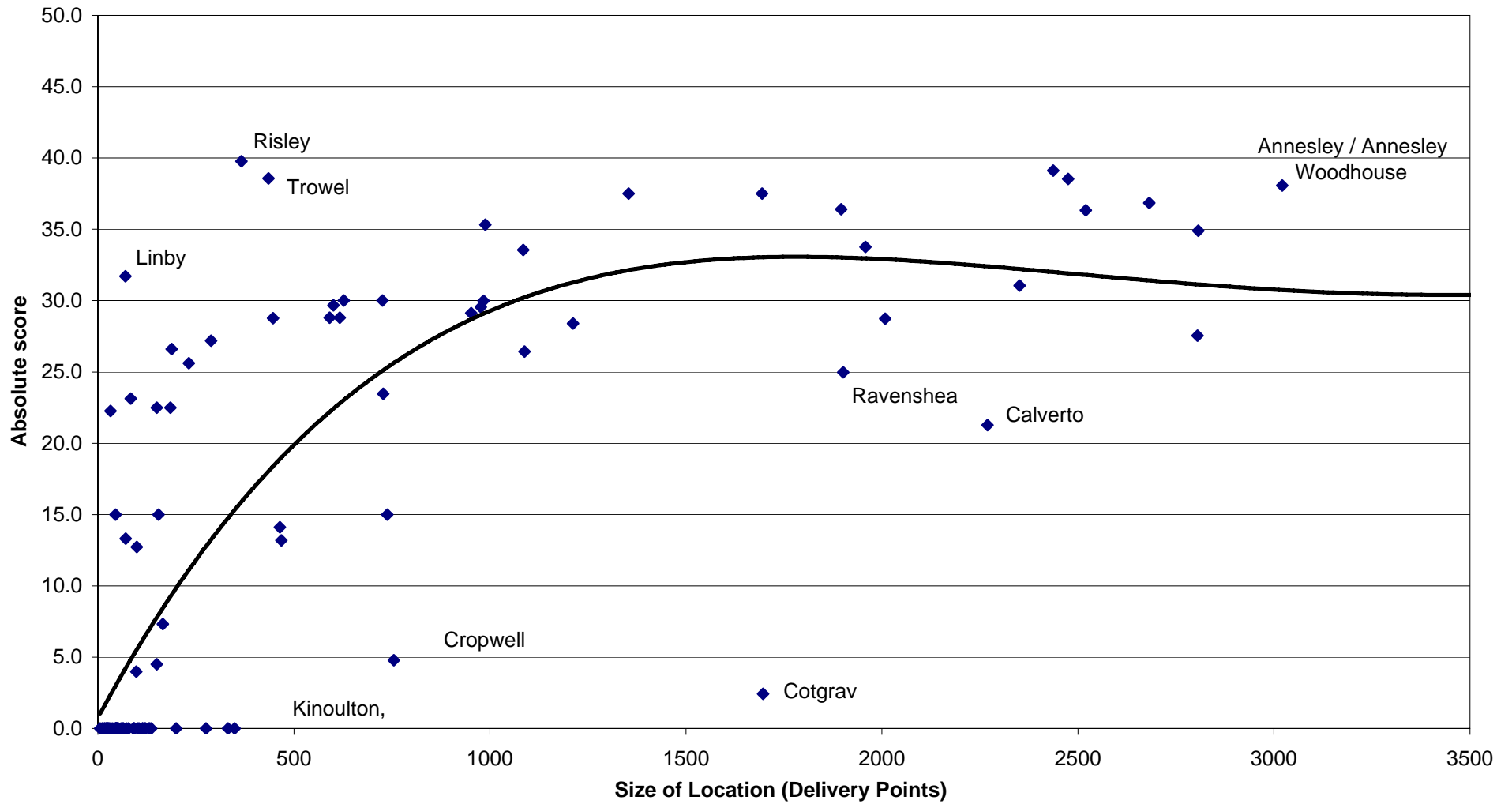
richard.cooper@nottscc.gov.uk

jonathan.hall@nottscc.gov.uk

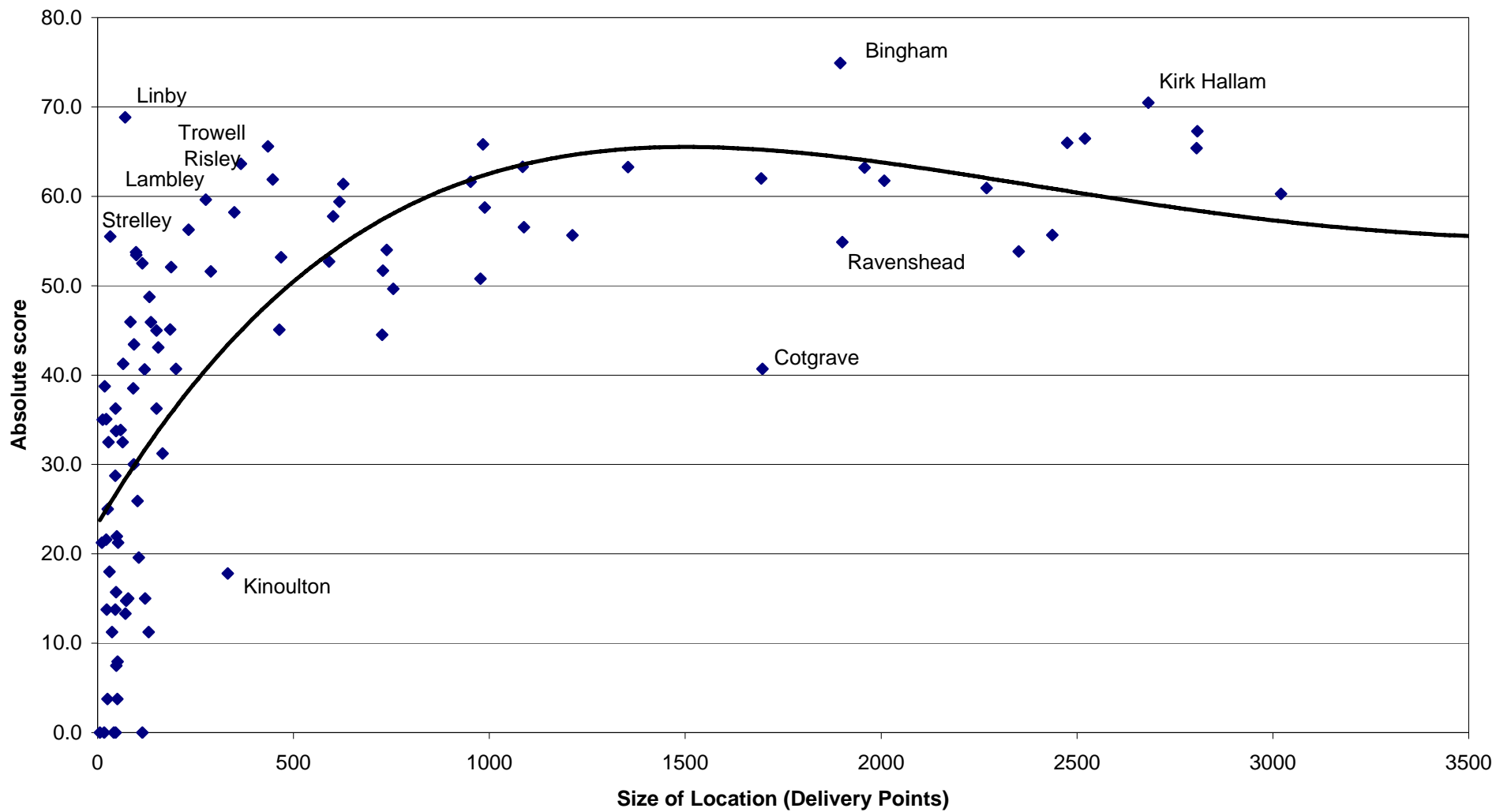
Figure A2.1 Average Score against Size - Settlements



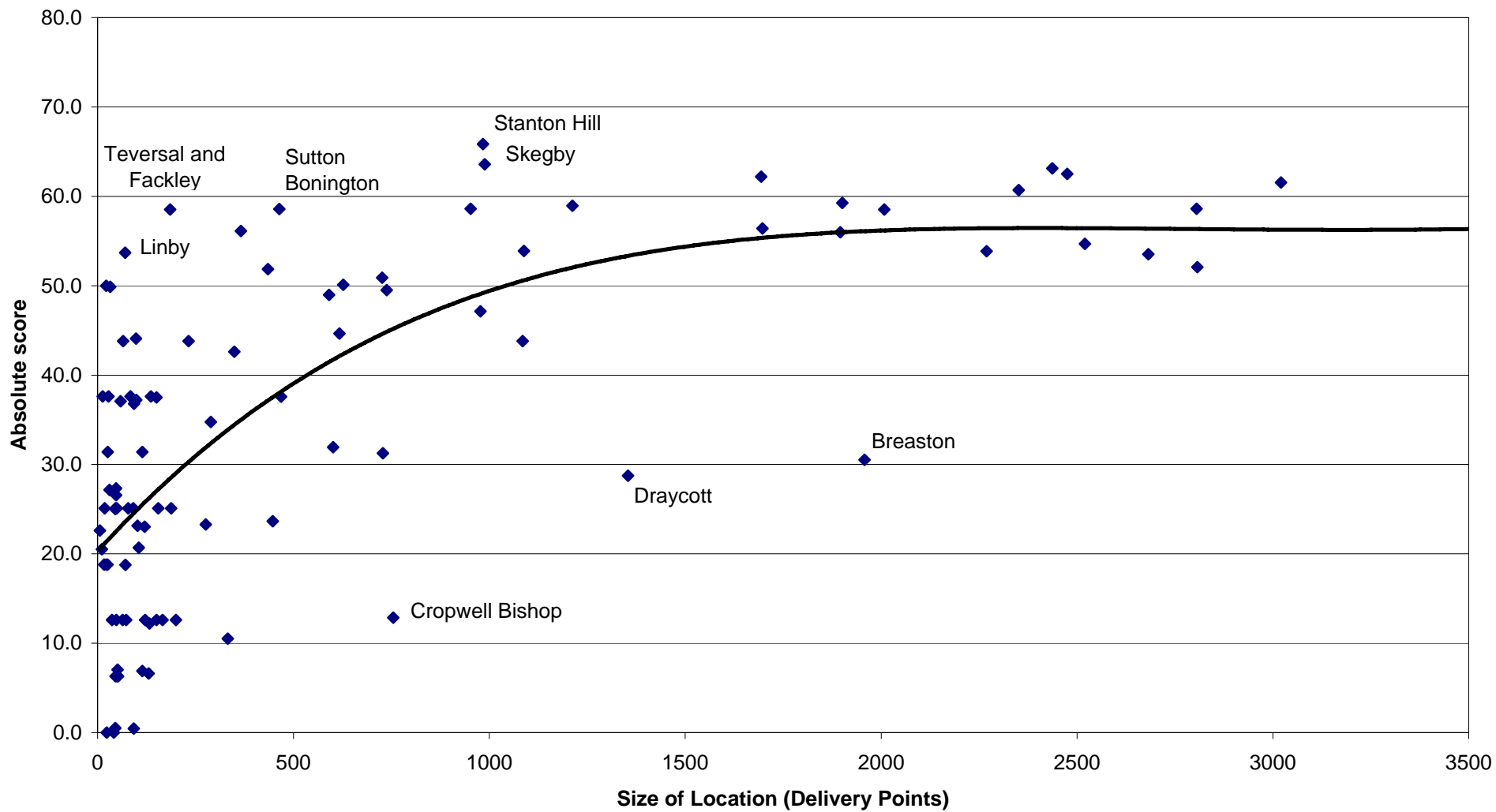
Employment score against size of Settlement



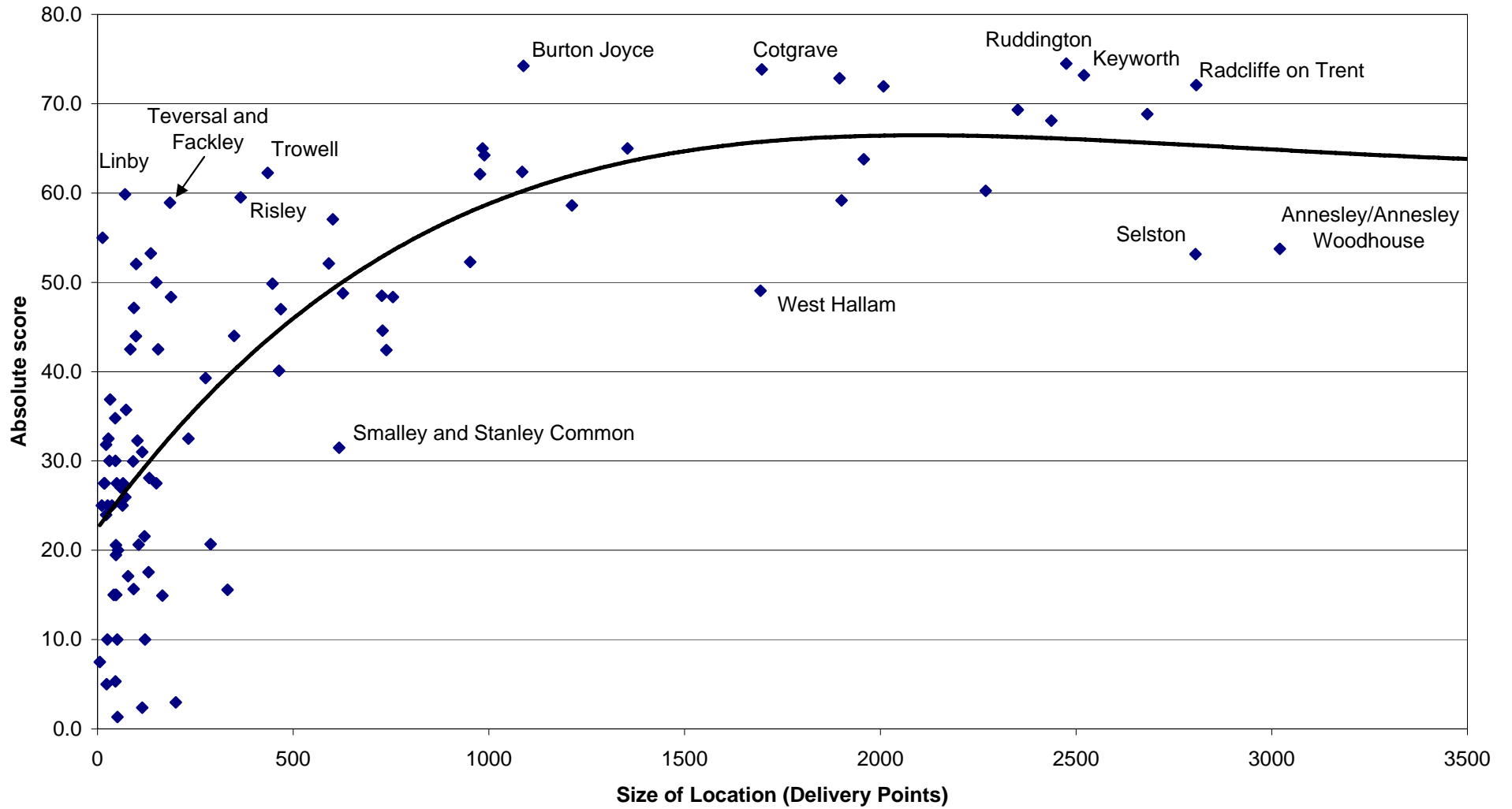
Education score against size of Settlement



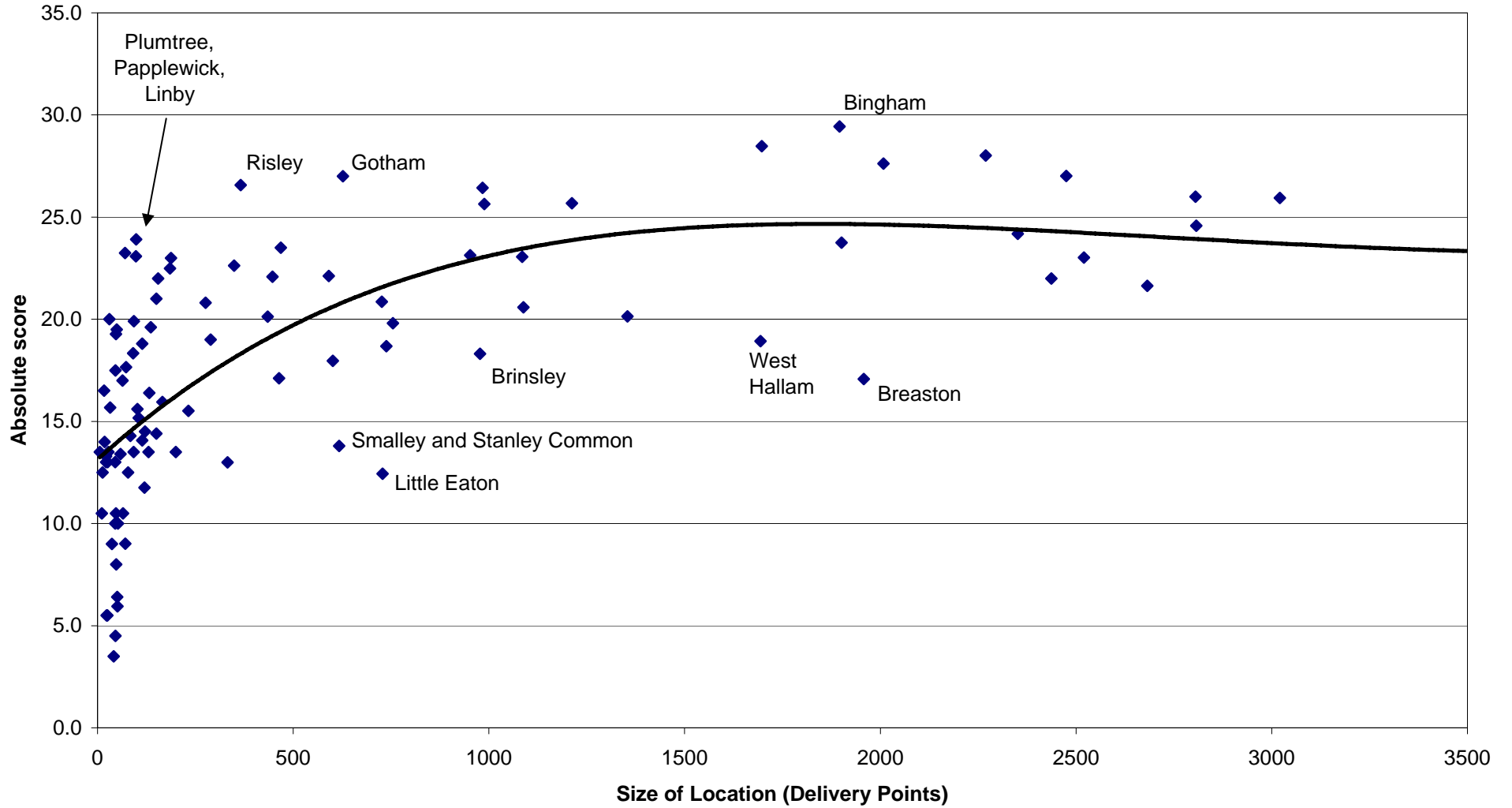
Health score against size of Settlement



Retail score against size of Settlement



Community facility scores against size of Settlement



Comparison of Education Theme against other Themes by Location

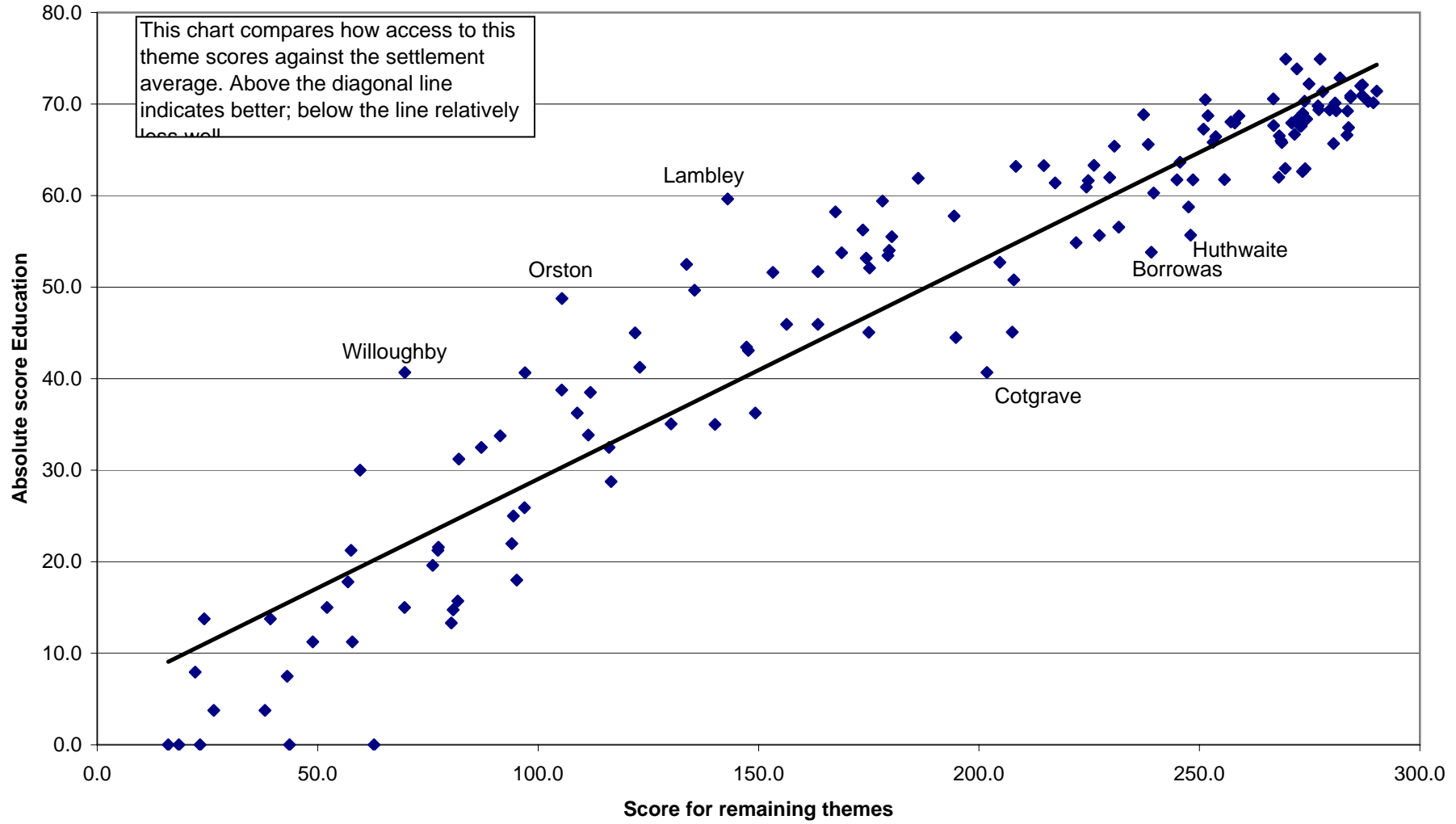
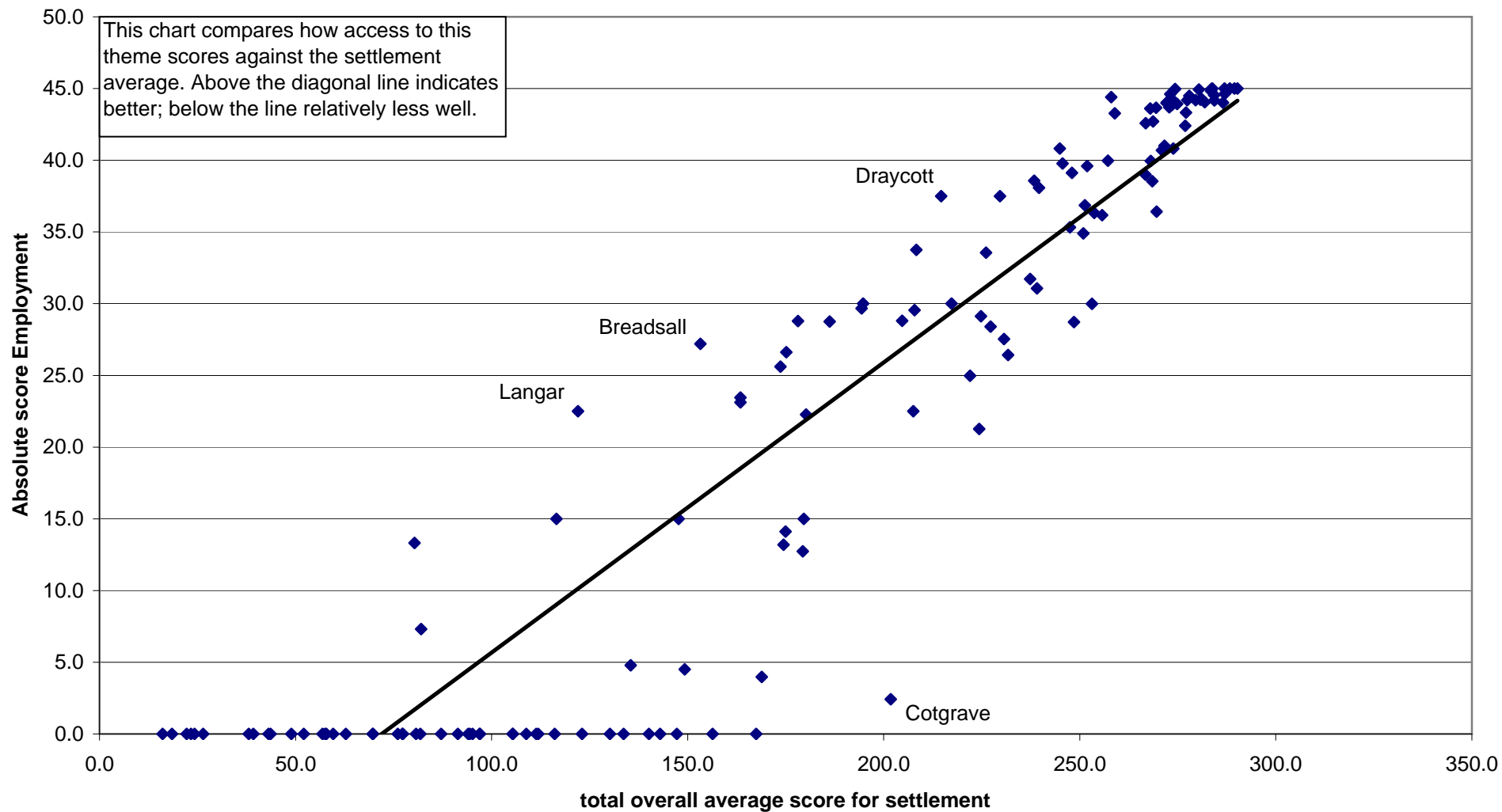
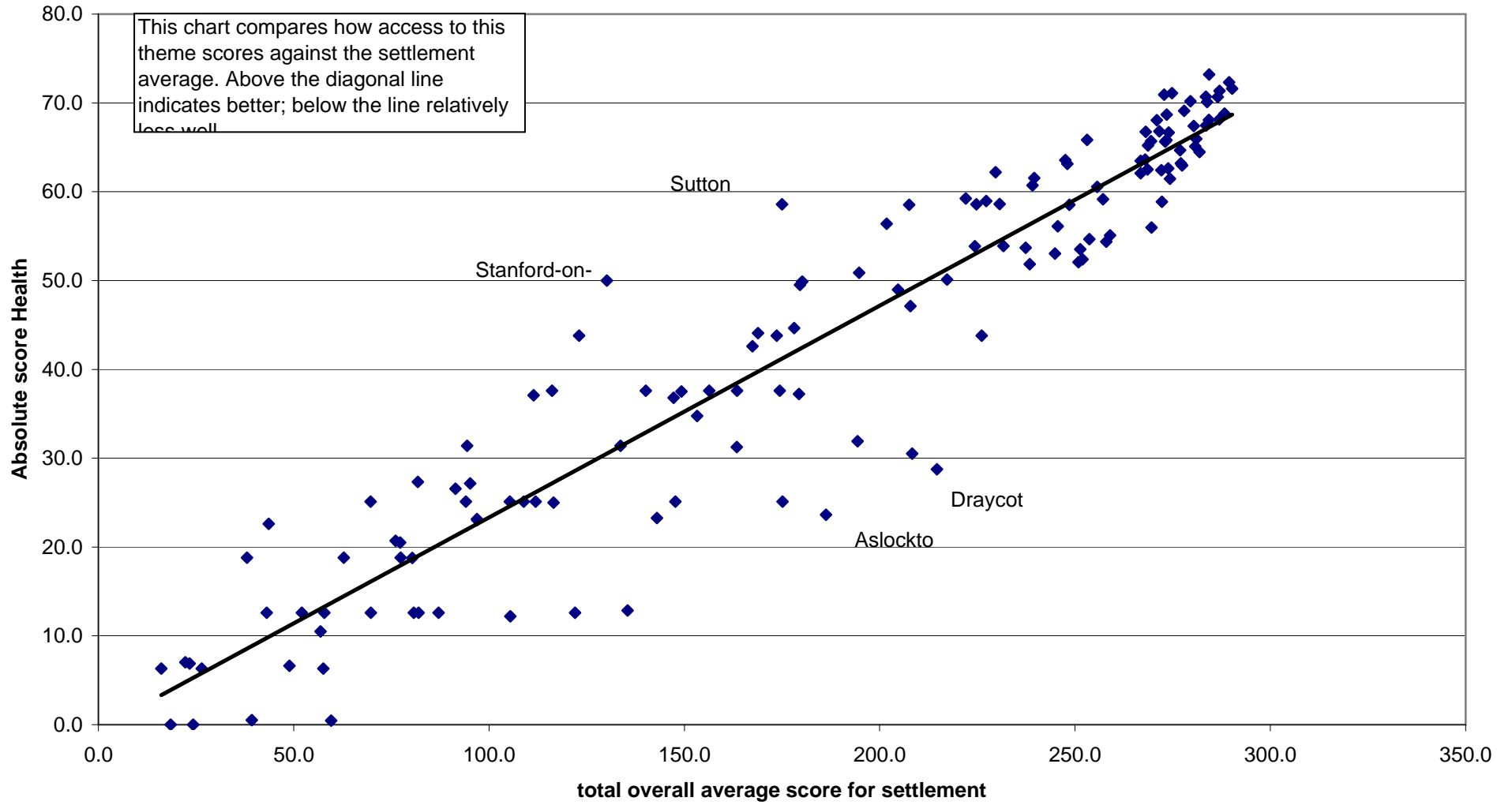


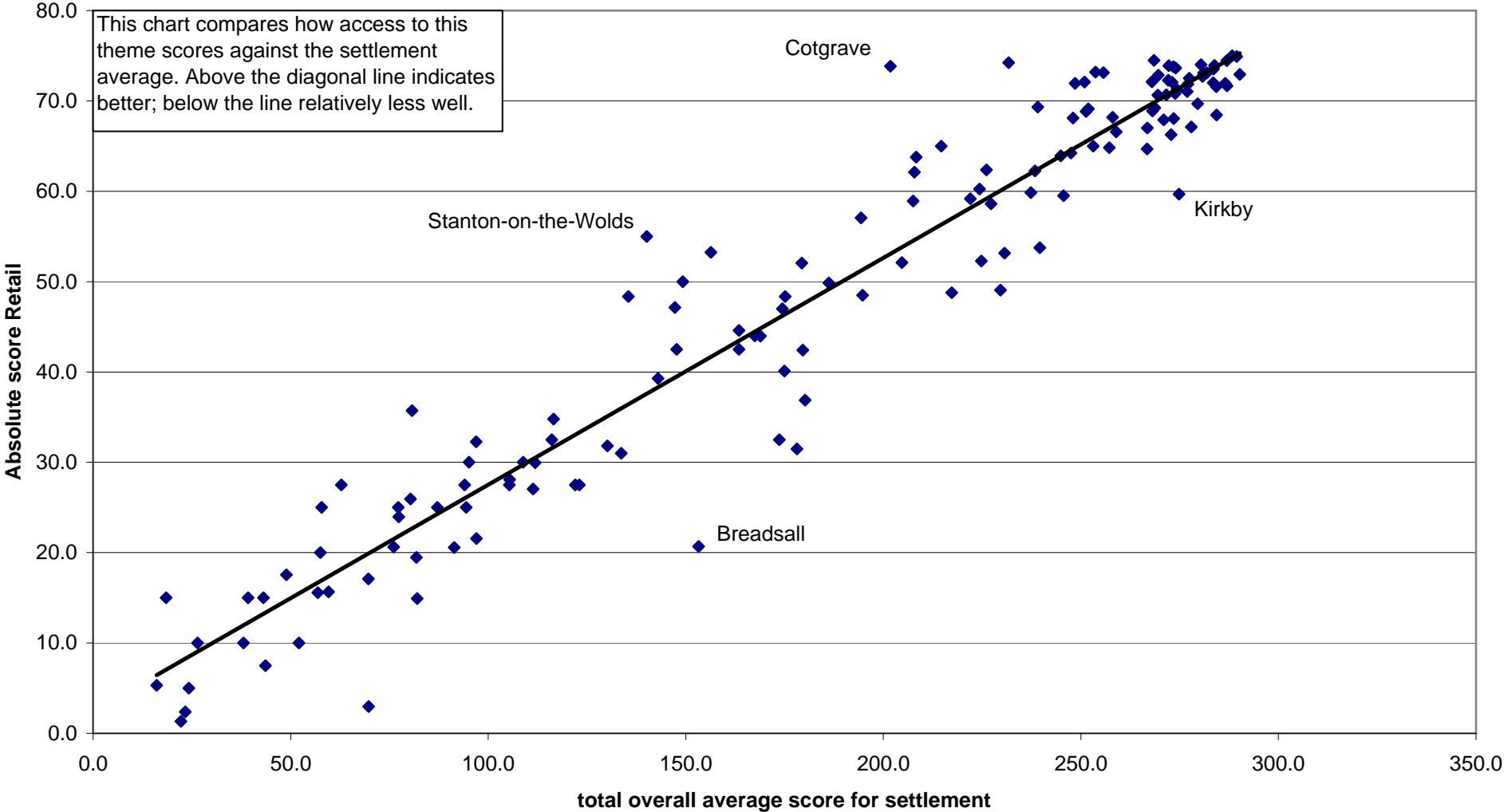
Figure A2.2: Comparison of Employment Theme against all Themes by Location



Comparison of Health Theme against all Themes by Location



Comparison of Retail Theme against all Themes by Location



Comparison of Community Facilities Theme against all Themes by Location

