



Nottinghamshire  
County Council

# Countylink

Issue No 57

June 2003



**BASSETLAW**  
DISTRICT COUNCIL  
NORTH NOTTINGHAMSHIRE



**GEDLING**  
BOROUGH COUNCIL



MANSFIELD DISTRICT COUNCIL



**NEWARK &  
SHERWOOD**  
DISTRICT COUNCIL



Rushcliffe

## Circulation to:

**Councillors** at Town and Parish Councils and Parish meetings; County Councillors; District and Borough Councils, interested individuals and organisations.

## In This Issue:

10 years on - Robin Hood Line	5
2001 Census	4
21st Century Towns	9
Access All Areas	7
Around the County	11
Beacon Councils – Round 5	8
Branching out – Bridleway	5
FRANK advice	5
Hidden Valleys	3
Idlewells Centre	4
Kings Clipstone	3
LGA Annual Conference	6
Living Spaces	7
Long Term Illness	9
National Tree Week	4
Neighbourhood Renewal Unit	6
New Director	2
New Electoral Divisions	6
Post Office Benefit changes	10
Reading can change your life	10
Regional Centre of Excellence	6
Removing Barriers/Beacon Award	2
The Romantic Canal	2
Rural Mobile Contact Point	10
State of the Countryside 2003	9
Volunteers Needed	8
Welcome	12
Who to contact	12
Yew Trees and Parish Pumps	7

## State of the Countryside 2020

Who will live in the countryside in 2020? How will rural people earn their living? What will the quality of life in the countryside be? - just some of the questions debated at a seminar in London in April on the main drivers of change that will shape the future of the countryside.

Kickstarting the debate with a new report on the State of the Countryside 2020, Countryside Agency chief executive Richard Wakeford said: "Unless we look forward, there's a risk of little steps that don't add up to the journey that's necessary. The way people act now will shape the physical environment and communities of tomorrow's countryside. We cannot treat our countryside as an island. We value it as a place to live, to work and to visit, yet wider drivers are leading to fundamental change.

"This is the first piece of work to take a broad yet systematic look at the future of the English countryside, identifying the main drivers of change and key uncertainties, and developing scenarios for the future. We are not attempting to predict that future nor are we setting out our vision of what we would like the countryside to be in 2020. We are encouraging people to identify and address the right questions to achieve sustainable development."

Continued on page 2

The Chief Executive also said, "Our report highlights the impact of more intense global competition on the countryside, resulting in consolidation and new niche players; in a fast-moving 'network' world powered by ICT, outsourcing will be taken to more radical extremes. The need for homes continues to rise as we see an increase in single person households and longer life expectancy; commuter countryside will continue to expand but country towns will become increasingly desirable targets for new or relocating business. Powerful forces of social fragmentation will work against the traditional strong sense of community in rural areas; and there are mixed prospects for the physical environment of the countryside. Agriculture will still form an important economic driver and will grasp new opportunities. But biotechnology and the drive for increased renewables will reshape the products of the land and the landscape."

The State of the Countryside 2020 (Ref CA138) is available from Countryside Publications, PO Box 125, Wetherby, West Yorkshire LS23 7EP  
Tel: 0870 120 6466 or log on to the web site at [www.countryside.gov.uk/stateofthecountryside](http://www.countryside.gov.uk/stateofthecountryside). A full report of the research by the Tomorrow Project is also published on their web site. [See also State of the Countryside 2003 article on page 9]

## Removing Barriers to Work - Beacon Award

A delegation led by the County Council's Deputy Leader Councillor David Kirkham travelled to London to receive the Beacon Award for Removing Barriers to Work from Local Government Minister Nick Raynsford at a special presentation ceremony in April.

Speaking at the presentation, Councillor Kirkham said: "I am delighted to accept the Beacon Award on behalf of Nottinghamshire County Council. It reflects the commitment, dedication and hard work of all the staff and partners involved. Achieving the award means that Nottinghamshire County Council has demonstrated its ability to bring together a wide range of partners to respond to changing employment patterns across the county as part of its unwavering commitment to improving the job prospects of local residents, particularly those who experience difficulties getting into work".

Nottinghamshire County Council were one of the 58 beacon awards which were announced by the Office of the Deputy Prime Minister (ODPM) for the 10 categories of round 4 beacon awards.

Beacon Awards information can be found at:

<http://www.idea.gov.uk/beacons/>

[See also Beacon Council Scheme Round 5 on page 8]

June 2003

## New Director



A local lad born and bred in Nottinghamshire has been appointed to one of the County Council's top jobs, heading up a brand new Department.

Mick Burrows has been appointed as the Director of the new Culture and Community Department. He has worked for the County Council for 8 years and was previously an Assistant Director working on Community Training and Education.

"I am delighted to take up the new post and see this as a great opportunity to help make Nottinghamshire an even better place to live, work and play," said Mick. "I firmly believe that our collective aim should be that every man, woman and child who comes into contact with Nottinghamshire County Council believes we are excellent."

The County Council's new Culture and Community Department brings together a range of County Council services including libraries, sports, tourism, youth, community and play, trading standards and regeneration.

## The Romantic Canal is unveiled

Two significant publications that herald the start of a long-term project that will substantially increase and expand the restoration, usage and image of the Grantham Canal, were launched in April.

'The Romantic Canal' is a new guide to the Grantham Canal featuring a brief history of the canal and interesting sights and information along its length. The guide contains detailed information on 6 linear walks and 12 circular walks along and around the canal – for example, Trent Lock to Fosse Bridge, Fosse Bridge to Hickling Basin and Woolsthorpe to Grantham. The guide also includes local stories such as the 184 poplar trees growing at Vimy Ridge Farm next to the canal, representing the 184 soldiers of The Sherwood Foresters Regiment killed at that Battle on the Somme.

The 33-miles charted by the Grantham Canal in the guide show the rural



landscape at its best and the potential for leisure and tourism. Accompanying the guide is an arts strategy 'The Twenty Mile Pound'. The Grantham Canal Partnership instructed artist Simon Read to undertake a mammoth task to match the physical restoration of the Grantham Canal with a public arts strategy that will complement and expedite it.

The strategy illustrates the possibilities of more mainstream artistic development on specific sites such as the creation of a canal resource centre and the need for creative and pleasing signage along the towpath. Amongst other ideas, it suggests establishing an artist in residence programme with a clear remit to engage the local community.

Both publications provide the initial stepping stones for restoration and improvement of the Grantham Canal for the benefit and pleasure of the local communities. The 33-mile canal passes through three counties and consultation, input and commitment will be required if the restored canal is to be the magnet for the artistic, community and commercial enhancement that is envisaged.

The guide costs £6.50 (plus post and packing) and is available from Rushcliffe Borough Council Customer Services Centre by calling 0115 981 9911. Cheques should be made payable to Rushcliffe Borough Council.

## Hidden Valleys

It has taken 2 years for a group of representatives from councils and organisations to devise the 'Hidden Valleys' project which promotes the literary heritage, countryside and history of Hucknall, Jacksdale,



Selston, Underwood, Bagthorpe, Annesley, Ravenshead, Newstead, Linby and Papplewick.

A glossy brochure and postcards are now available to promote

the "Hidden Valleys" as a result of a £100,000 project to attract more visitors to the rural areas of Ashfield and Gedling.

An educational pack is being developed for children aged 7-11 and will be offered to all 20 primary schools in the Hidden Valleys area. The pack will be based on themes of the countryside, literacy heritage, geography and history including the mining legacy. Among the activities for children to carry out are

identifying geographical features such as roads and rivers; comparing the lives of the literary figures Lord Byron and DH Lawrence and looking at different ways of travelling around the area.

In addition improvements to footpaths and bridleways have also taken place as well as the erection of new way markers, benches and information points. The work has been carried out by EnProve Intermediate Labour Market Team.

The main aims of the project are to:

- Improve the local economy
- Give people viable skills and experience to get into employment
- Improve people's perceptions of where they live
- Give children and their families the opportunity to go on healthy walks.

Representatives from Ashfield District Council, Gedling Borough Council, Nottinghamshire County Council, EnProve, parish councils and other public/private sector organisations made up the steering group of the Hidden Valley Project, with main funding coming from the Government's Rural Priority Area Programme, EnProve, parish and district councils and Nottinghamshire County Council.

Ella O'Connor, Ashfield District Council (pictured), said "The project has proved to be a demonstrable success through effective partnership working" and Neil Cuttell, Gedling Borough Council (also pictured), said "I am pleased that Gedling Borough Council has been part of this innovative partnership which will benefit a wide variety of individuals from local business people to schoolchildren".

Copies of the brochure and postcards are available from Gedling Borough Council, Civic Centre, Arnold or telephone 0115 901 3803 or 0115 901 3602.

## Kings Clipstone

As featured in Countylink Issue No 53 published in September 2002, Old Clipstone is now known as Kings Clipstone. The changeover happened on 1 May 2003 when local elections took place. The parish contains 2 wards, New Clipstone and Kings Clipstone.

Kings Clipstone comes from the number of monarchs who lived in or visited the area. King John's Palace was built in the 13th century and the remains can still be seen, virtually in the middle of the village.

**Clipstone Parish Council's** name remains the same.

## Idlewells Centre



The County Contact Service, which provides easy access and information across a wide range of County Council services, has a brand new shop in the Idlewells Centre in Sutton-in-Ashfield. County Contact

also helps with advice on Welfare Rights and Department of Work and Pensions matters. The new development had its official launch on 31 March when David Lathrope and Councillor David Kirkham from Nottinghamshire County Council were present to cut the cake and declare the shop open for business. Also present were Councillor Les Matthews, Ashfield District Council and Simon Harry representing the Ashfield Primary Care Trust, together with representatives from many local groups and organisations.

County Contact has been in the Mansfield and Retford town centres for over 4 years.

As from 1 September an advisor will be based in the Tin Hat Resource Centre, Selston each Monday from 9.30-12.00. The friendly professional advisors can offer help and advice on a wide range of issues eg Free School Meals, services for older people, problems with litter, road repairs, child care, help filling in forms. The service is free and confidential.

At County Contact the priority is YOU the customer and they are proud of their excellent standards of customer service. In County Contact's last survey 99% of customers were either satisfied or very satisfied with their service.

Several new staff have been recruited, who, together with the existing Mansfield team, will provide a first class customer service across the Mansfield and Ashfield shops.

County Contact looks forward to developing the service in Ashfield to meet the needs of their customers, working in partnership with other agencies to provide a high quality service.

The Sutton County Contact Point is open:  
Monday to Thursday 09.00 am-5.00 pm  
Friday 9.00 am-4.30 pm, Tel No 01623 476800  
E-mail: [contact.sutton@nottsc.gov.uk](mailto:contact.sutton@nottsc.gov.uk)

Jane Banks, Manager, Mansfield and Sutton County Contact

## National Tree Week and Tree Planting Grants

26 November to 7 December 2003 is National Tree Week throughout the UK and organisations are invited to celebrate it by planting some trees with a Tree Council grant. Two schemes are available: one for voluntary organisations, individuals, parish or community councils; the other for schools. Grants are not made to local authorities.

Projects that involve children are a priority. Applications can come from formal organisations or from less formal groups specially coming together for the Week.

The trees must be planted on land with public access. Eligible costs include:

- The trees themselves;
- Labour for planting;
- Supports;
- Mulch and soil improvements.

Grants can range between around £100 and £700. Match funding of at least 25% of the total cost of the project is required and applicants must be able to show that they are able to maintain the trees once planted. The Tree Council has a Web site at <http://www.treecouncil.org.uk>, or can be contacted at Tel: 020 7828 9928. E-mail: [Info@treecouncil.org.uk](mailto:Info@treecouncil.org.uk).

## 2001 Census

The Census Results are continuing to be released. The National Report is available, and contains full details for all districts (and County and Unitary areas). County and district information is only available on a CD at a nominal charge from National Statistics. You may find that the profiles for districts that Nottinghamshire County Council are producing will suffice. They will be available on its web site, and in printed form, to be sent to all libraries, by early June. Profiles for wards will follow, hopefully in mid-July, with parishes as soon as information is available. Again, these will be available on the web site and in libraries.

The current plan for the release of Census results for parishes is to release all results during October 2003. The data will be available on the web, and on CD or DVD (obtainable from ONS). The County Council will be producing profiles for parishes at around the same time.

More information is available at: [www.nottinghamshire.gov.uk](http://www.nottinghamshire.gov.uk) and [www.statistics.gov.uk](http://www.statistics.gov.uk)  
Richard Cooper, Research Team, Tel: 0115 977 4978

## FRANK Advice

FRANK – Advice and Information on Drug and Substance Misuse Issues. *'If You Can't Talk To Your Mates About Drugs, Talk To FRANK'*

The National Drugs Helpline was re-launched on the 23 May as FRANK.

FRANK is contactable by telephone or the internet to provide clear advice and information on drug and substance misuse issues.

FRANK is currently being advertised through television and national and local media

FRANK is a virtual person but the advice is real and very relevant for anyone needing advice about drugs either for themselves or for friends or family they want to help.

FRANK is contactable on: 0800 77 66 00 Or at: [www.talktofrank.com](http://www.talktofrank.com)

Adrian Dudley, Nottinghamshire County Council  
0115 977 3058

## 10 years on and still going strong

The Robin Hood Line has wrapped up 10 years of success by unveiling an eye-catching and colourful livery for its 10<sup>th</sup> anniversary which was celebrated on Friday 16 May 2003.

Since the Nottingham to Newstead section of the Robin Hood Line was opened in May 1993, nearly 7 million passengers have used the line, with an impressive 3,500 people using the service every day on average.

With one third of these passengers being former car users, the service has been a great success story in reducing congestion and pollution, boosting the local economy and linking communities to the national rail network.

To commemorate the 10<sup>th</sup> anniversary, a new 47 metre long Class 170 Turbostar train was covered from roof to wheels in a giant colourful design to promote the line, which included a striking Robin Hood archer logo.

The train was unveiled at a special ceremony at Nottingham Station, then travelled up the Robin Hood Line on service to Newstead. It was met at Newstead by Central Trains' mascot 'Travelling

Trevor', who gave out goody bags to a class of children from nearby Annesley Primary School. Councillor Terry Butler, Cabinet Member for Environment at Nottinghamshire County Council, said: "It is a real landmark that the Robin Hood Line has reached its 10 year anniversary and is still going strong – with latest figures showing that it is the fastest growing service in the Central Trains network. We have worked hard to keep the Robin Hood Line a success and last year introduced a new half hourly weekday service to help give our loyal customers the best ever links between communities on the line and the national rail network."

The train will be wrapped in vinyl for at least 2 years and will be showcased around the whole Central Trains Network.

The Robin Hood Line is a partnership between Central Trains, Nottinghamshire County Council, Nottingham City Council, Derbyshire County Council and the Strategic Rail Authority.

## Branching out to save local bridleway

You may have heard of willow furniture, baskets or even cricket bats, but now the County Council has branched out and found a more unusual use for willow wood.



The Council's Rights of Way team has been working with the Environment Agency to save an Edwinstowe bridleway (pictured left:

before and below: after) from disappearing into the River Maun by using willow stakes, branches and soil to repair erosion damage.

The willow stakes, which were donated by Fernwood School in Wollaton, were driven into the ground to provide the basis of a new path structure. Smaller, malleable willow branches, provided by local farmer Tony Strawson, were then woven around to connect the stakes before the area was back-filled with soil.

County Councillor Butler said "This is a completely natural way to repair a damaged bridleway, using local products, local people and local skills and we are delighted that the bio-engineering project has been such a great success. It is so



important to keep these bridleways open and accessible to the whole community so that anyone can get out and enjoy our beautiful countryside.”

The bridleway is used by almost 100 people every week.

## New Electoral Divisions for Nottinghamshire

The Boundary Committee for England (BCFE) has suggested changes to most of the electoral divisions in Nottinghamshire. The BCFE promotes equality in local council elections. This means making sure that the areas represented by County Councillors (electoral divisions) are roughly the same size.

The BCFE has suggested changing the boundaries of every division but one for Nottinghamshire and increasing the number of Councillors from 63 to 67. The period of consultation runs until **21 July 2003**.

Visit the BCFE website at: [www.boundarycommittee.org.uk](http://www.boundarycommittee.org.uk) for more information about the proposed changes and to find out how you can have your say.

## Regional Centre Of Excellence

East Midlands Development Agency (emda) is working with partners to develop a Regional Centre of Excellence with the aim of raising standards of economic development and neighbourhood renewal in the region.

The 'Centre of Excellence' concept, which will be established in each of the regions, will provide practical support to improve the capacity and capability of everyone involved in economic development and regeneration. The proposed East Midlands model will seek to help all organisations by exchanging good practice, improving skills and capability, providing better access to finance and funding and a range of other activities as identified. More details can be found on the emda website at <http://www.emda.org.uk/news>

## LGA Annual Rural Conference: 17 September 2003 Delivering for Rural Communities

The LGA's annual rural conference is an important event providing a valuable opportunity for members and officers from across the country to participate in lively debate and exchange of views, information and good practice in rural affairs. Last year 280 delegates took part.

June 2003

The annual rural conference will be held on Wednesday 17 September 2003 at the Old Swan Hotel, Harrogate and will be preceded by a meeting of the LGA Rural Commission on 16 September.

Through a combination of plenary sessions and workshops, delegates will be able to take the opportunity to debate how best to deliver rural policy and programmes within rural communities, whilst learning about what works and why. Workshops will be run twice during the afternoon.

Two newly appointed beacon councils for supporting the rural economy, East Riding of Yorkshire and Richmondshire, will be sharing good practice in implementing successful local regeneration initiatives.

Other issues planned at the Conference include:

- The results of the review of rural delivery arrangements
- Broadband for rural areas
- One stop shops and provision of co-located services.

The delegate fee for the conference is £199.00 plus £34.83 VAT. The conference will commence at 10.15am and close at 4.15pm.

For more details contact the Local Government Association on Tel: 020 7664 3013, Fax: 020 7863 9158 or e-mail: [info@lga.gov.uk](mailto:info@lga.gov.uk)

## Neighbourhood Renewal Unit to Merge Community Grant Streams

The Neighbourhood Renewal Unit (NRU) is set to phase in a single community grants programme from next year after the government admitted its empowerment funding needed clearer focus to achieve results. The merger between the £36m community empowerment fund to help voluntary and community groups get involved in local strategic partnerships, the £50m community chest, which offers small grants for local self-help projects, and the £6m community learning chest, to support learning and skills for community groups, will begin in April 2004. The process will be complete by April 2006. Each programme will maintain its separate identity but will share a single, clear set of aims and objectives.

Details of the new fund are outlined in a consultation paper which says funding will be granted to a single organisation acting as responsible body, which may or may not be one of those currently fulfilling that role. The responsible body, together with the local community empowerment network, will determine how to divide resources between four 'activity streams'

and whether to manage all or any of the streams itself. The NRU suggests 20-40% should be spent on empowerment, 0-50% on community support for neighbourhood-level delivery; 25-60% on small grants and 15-30% on community learning.

Source: [www.newstartmag.co.uk](http://www.newstartmag.co.uk)

## The 'Access All Areas' awards

Do you provide goods and services to the public?

Does the way you provide those goods and services address the needs of disabled people?

The 'Access All Areas' awards are looking to recognise and congratulate small organisations that have made imaginative changes to the way they provide their services so that disabled people can use them.

There are over 8.5 million disabled people in Great Britain with a spending power of around £46 billion per year – that's a lot of potential customers. Making sure your organisation is open to disabled people is not just the right thing to do – it also makes sound economic sense.

Under the Disability Discrimination Act (DDA) anyone who provides a service to the public has a duty to make sure that their services are accessible to disabled people. These duties are being extended from October 2004 to include the physical features of your premises too.

This award is to identify those small businesses and organisations across Great Britain that have already made their services more accessible to disabled people.

Awards will be made to regional winners in England, a winner from Scotland and a winner from Wales.

Who can enter?

Businesses or organisations in the public, private and voluntary sectors with fewer than 50 employees.

Who cannot enter?

Businesses who employ 50 or more people  
Businesses who offer services solely to disabled people  
Franchised Businesses

How can I enter?

For an entry form for the Access All Areas awards and an information pack about the DDA, please write/fax/email/or telephone our distribution centre giving your name and company address.

Access All Areas Awards, Disability Discrimination Act Info Pack, PO Box 12, Nottingham NG7 2GB  
Telephone Number : 0845 124 9841 ,Fax Number: 0115 942 2335, Textphone: 1 800 1 0845 124 9841  
Email address: [DDAinfopack@meads-ltd.co.uk](mailto:DDAinfopack@meads-ltd.co.uk)

Closing date for entries is 30 September 2003

## Yew Trees and Parish Pumps



The Conservation Foundation's Yew Tree Campaign was launched to encourage the protection of Britain's ancient yews, trees which are over 1,000 years old. Yews for the Millennium was created by the Foundation to enable parishes throughout the country to celebrate the

Millennium by planting young yew trees propagated from ancient yews estimated to be at least 2,000 years old. At the Millennium over 7,000 yews were distributed to 47 distribution events around the country. Parish Yews are still available at £15 + delivery and 'special edition' trees at £25 + delivery. As a result of the success of the Yew Tree campaign it became apparent that many people throughout the country who were involved in local community and environmental issues had no access to national environmental information. As a result everyone receiving a millennium yew was invited to become a Parish Pump. The main source of information about Parish Pumps is via a regularly published newsletter. There is no subscription and anyone is welcome to join. This title is a reminder of the days before modern communications when the daily visit to collect water was also the main source of receiving information.

Contact: The Conservation Foundation, 1 Kensington Gore, London SW7 2AR Tel: 020 7591 3111 e-mail: [info@conservationfoundation.co.uk](mailto:info@conservationfoundation.co.uk)

## Living Spaces

Living Spaces provides grants to help people improve open spaces in their neighbourhood and create valuable places for the whole community to enjoy. It can help local groups to create and improve a huge range of spaces including:

- play areas
- community gardens
- local parks
- village greens

- nature areas
- ponds
- courts and squares
- city farms.

Grants are available to any existing neighbourhood group anywhere in England. Any kind of outdoor space can be considered for a grant as long as it is:

- open to the public most of the time
- within 2 miles of a residential area
- not a formal sports pitch.

Grants are available for any amount between £1,000 - £100,000. Applicants will also benefit from the support offered by Living Spaces Enablers, who can help draw up detailed action plans and budgets and put groups in touch with other local organisations which can help ensure projects are a success.

Website: [www.living-spaces.org.uk](http://www.living-spaces.org.uk)

## Beacon Council Scheme - Round 5

The 10 themes for the next round of the Beacon Council Scheme have been announced. They are:

Benefits Administration  
 Better Local Transport  
 Crime & Disorder Partnerships  
 Early Years & Childcare: the Sure Start Agenda  
 Housing Renewal  
 Promoting Sustainable Tourism  
 Services for Older People  
 Supporting People  
 Supporting Social Care Workers  
 Transforming the School Workforce

A copy of the Beacon Council Application Brochure 2003 will be sent to the Council Leader and Chief Executive of all local authorities in England. Further copies of the brochure are available from ODPM Free Literature, PO Box 236, Wetherby LS23 7NB.

Telephone: 0870 1226 236

Textphone: 0870 120 7405. Fax: 0870 1226 237

E-mail: [odpm@twoten.press.net](mailto:odpm@twoten.press.net). More information is also available from the Beacon Council Team at the Office of the Deputy Prime Minister on 020 7944 4759 or by e-mail from [beaconsinfo@odpm.gov.uk](mailto:beaconsinfo@odpm.gov.uk)

Website: [www.local-regions.odpm.gov.uk/beacon/rd5/index.htm](http://www.local-regions.odpm.gov.uk/beacon/rd5/index.htm)

## Volunteers Needed: for New Schools Programme

Are you from an ethnic minority or of dual heritage?  
 Would you like to do some voluntary work in schools?  
 Are you in a professional role where you could be spared for a couple of hours during school time?

June 2003

The NAVO/ Children's Fund Schools Programme is currently looking for positive black role models to visit county schools, from September onwards. Schools are requesting role models who can talk a little about their culture and also their own experiences at school and in the work place.

The aim is to introduce people of other cultures to white children who have not had this opportunity, and to inspire black pupils who are very much in the minority in our schools. The black role models will be part of a programme which also includes an interactive drama workshop provided by a theatre company, and an anti-racist computer package plus a manual which has been developed by Nottingham University to assist teachers and staff with the schools equality scheme.

Volunteers can be from any ethnic background, can be involved at just one school or can decide to do sessions in more than one school.

Volunteers will receive support and full out of pocket expenses.

If you feel more comfortable working with a friend it is acceptable for one or more volunteers to work together on sessions.

Volunteers are needed in all areas of the County, as the programme has received an enthusiastic response from schools.

If you think you might be interested please contact the co-ordinator Marion Gray by e-mail at [navoproject@aol.com](mailto:navoproject@aol.com) or leave a message with NAVO on 01623 651170 and Marion will be pleased to discuss this with you further.

## Volunteers Needed: for Victim Support

Victim Support have been offered a presence at fundraising/PR raising events. The fundraising team will be staffing some of these periods plus others, but would appreciate assistance from volunteers.

Goose Fair

1 October 6pm to 9pm; 2 October 12pm to 9pm;  
 3 October 11am to 9pm; 4 October 11am to 9pm

Riverside Festival

2/3 August - Victoria Embankment

Radford Carnival

9/10 August

If you are able to help in anyway, please contact Victim Support on 0115 852 3507

## New Opportunities for people with long term illness

Being diagnosed with a long term illness can “knock” people off their life course. They can lose their confidence and get pushed into despair. Interactions with professionals often adds to further disempowerment. Now the Department of Health has recognised that in fact people with long illnesses have an expertise in dealing with the consequences of their illness on their lives and can share that knowledge with others in a similar situation. The NHS is offering free lay led courses to further develop the skills of people with long term illness. All the primary care trusts in the county of

Expert Patients Course content:

- goal setting/action planning
- problem solving
- doable exercises
- symptom management techniques
- fatigue management
- dealing with emotions
- effective communication
- accessing community resources

Nottinghamshire are now offering FREE courses to people with long term illness. The courses are held in a flexible time frame and localities nearer to their residence. Anybody with a long term illness is eligible for this free course.

If interested please contact your local primary health care office (call NHS Direct **0845 4647** for the contact number of the primary care trust near to you).

## 21st Century Towns

Broxtowe Borough Council has recently been successful in obtaining a significant amount of funding from the Greater Nottingham Partnership (GNP) to help launch the 21st Century Towns Project. The project aims to enhance and promote the 4 town centres in Broxtowe by improving their physical environment, appearance and heritage, tackling crime and the fear of crime, supporting the development of local businesses and marketing the towns as attractive destinations for shoppers, workers, visitors and new businesses.

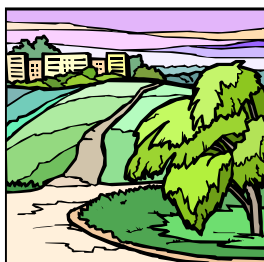
The project will build on work achieved in Eastwood town centre over the last year, which has seen a number of successful projects undertaken as part of a co-ordinated town centre management strategy, including the provision of crime prevention training to local traders and the external improvement of a

number of retail and commercial properties. The funding will also support the employment of a town centre co-ordinator for one year to oversee the implementation of these programmes and the effective delivery of town centre management actions in all areas.

Contact: Broxtowe Borough Council on 0115 917 7777

## State of the Countryside 2003: Rural areas could lose out as digital divide widens

As a nation, we care deeply about our countryside, according to the Countryside Agency's recently published 5th annual State of the Countryside report. It reveals that more than 90% of people, both rural and urban, care so much that they want to 'keep the countryside the way it is now'. The report also shows that, despite that wish, the English countryside continues to change - and on the high tech front there is a widening divide between town and country.



Issues highlighted in the State of the Countryside 2003 report include:

- 28.5% of the population live in the countryside
- more rural households (46%) than urban (32%) are involved in a local organisation and 42% of rural people are highly interactive with their neighbours compared with 28% in larger towns and cities
- on average rural incomes are higher than urban, but average rural weekly wages (£336) are lower than in urban areas (£384), with remote rural areas having the lowest average weekly wage £310
- agriculture's contribution to the economy continues to decline and it now employs less than 5% of rural people, but remains the primary means of managing 76% of the countryside
- total stock of businesses has been growing faster in accessible rural areas than in urban areas, although there has been little growth in remote rural areas
- 81% of the rural workforce is employed in either manufacturing, distribution, financial or public services
- overall there are rising educational standards in the countryside, illustrated by 82% of pupils in rural schools attaining Key Stage 2 Level 4 compared to 76% in urban schools
- road traffic in rural areas is forecast to rise by up to 30% by 2010
- a quarter of all leisure day visits are to the

countryside, with an estimated value of around £9 billion a year; walking is the most popular activity

- a new indicator measuring changes in the character and quality of the countryside is under development and will report for the first time next year.

The State of the Countryside 2003 report represents data and analysis according to 20 indicators that measure changes in rural social, economic and environmental conditions. A full version of the report (CA140) can be downloaded from the Countryside Agency website at:

[www.countryside.gov.uk/stateofthecountryside](http://www.countryside.gov.uk/stateofthecountryside) or obtained, cost £5.00 from Countryside Agency Publications, PO Box 125, Wetherby, West Yorkshire LS23 7EP Tel: 0870 120 6466

## Reading can change your life!

A campaign will be running throughout the summer aimed at encouraging parents and carers to support their children in reading for pleasure and to take advantage of their local library. The main theme is celebrating reading for enjoyment and the valuable contribution reading makes to a child's life. The focus of the promotion is not on doing new things but highlighting the opportunities for reading and how to access support ie promoting the excellent work the library service already does.

Information about libraries including opening times can be found on the County Council's website at: <http://www.nottinghamshire.gov.uk/home/leisure/libraries.htm>

## Benefit from Banking at Post Offices

April 2003 has seen the beginning of a new era for benefit payments. With the proposed phase-out of the benefit book comes a wealth of possibilities for pension and benefit claimants. No longer are people restricted to collecting their cash in one lump sum, and over the next couple of years they could be gradually swapping their benefit books for a handy wallet-sized card. It could be argued that benefit claiming has finally entered the twenty-first century.

What the Government's change to a system of direct payment from April 2003 means for Britain's 26 million benefit claimants will vary. For those who have long had their money paid directly into a bank account, the new options are insignificant. However,

for the 13 million customers who regularly collect their cash over the counter at their local Post Office branch, this change is big news.

The three banking options available to benefit claimants are:

1. A bank current account
2. A 'basic' bank account
3. Post Office card account.

For more information, please contact:

Post Office Ltd Tel: 08457 22 33 44

website: [www.postoffice.co.uk](http://www.postoffice.co.uk)

The Department of Work and Pensions,

Tel: 0800 107 2000, website:

[www.dwp.gov.uk/directpayment](http://www.dwp.gov.uk/directpayment)

## The Rural Mobile Contact Point

The Rural Mobile Contact Point was re-launched on 1 April 2003. The project is a partnership of Nottinghamshire County Council, Bassetlaw District Council, Newark & Sherwood District Council and Nottinghamshire Police. The vehicle rotates on a 4 weekly cycle visiting rural villages to enable residents to access Council and Police Services. Services available include: Social Services, Welfare Rights, Blue Badge Schemes, Schools/Free School Meals, Traffic & Travel Information, Highway Maintenance, Trading Standards, Employment Opportunities, Housing, Council Tax/Housing Benefits, Environment issues. Crime Prevention Advice, Driving Enquires, Reporting Crimes/Incidents, Lost & Found Property, Road Traffic issues and General enquires. Office telephone for enquires regarding the timetable: 01777 713800

### Useful Information:

County Council waste hotline 0115 977 1019;

Domestic Violence 0808 8000340;

Floodline 0845 988 1188 website: [www.environment-agency.gov.uk](http://www.environment-agency.gov.uk)

Report Racial Abuse 0800 085 8511

### District Council Websites:

District Council website addresses are as follows:

[www.ashfield-dc.gov.uk](http://www.ashfield-dc.gov.uk)

[www.bassetlaw.gov.uk](http://www.bassetlaw.gov.uk)

[www.broxtowe.gov.uk](http://www.broxtowe.gov.uk)

[www.gedling.gov.uk](http://www.gedling.gov.uk)

[www.mansfield.gov.uk](http://www.mansfield.gov.uk)

[www.newark-sherwooddc.gov.uk](http://www.newark-sherwooddc.gov.uk)

[www.rushcliffe.gov.uk](http://www.rushcliffe.gov.uk)

### City and County addresses:

[www.nottinghamcity.gov.uk](http://www.nottinghamcity.gov.uk)

[www.nottinghamshire.gov.uk](http://www.nottinghamshire.gov.uk)

A taste of Europe comes to Nottinghamshire next month with European themed arts workshops organised by Next Stage taking place at local festivals.

All sessions are suitable for beginners and led by professional artists and lead up to Arts Network which will take place at Rufford County Park from 21-23 August.

If Europe isn't your thing, there are taster arts workshops under the banner, Arts Net, at community celebrations all through the summer too – for more information contact Next Stage on 0115 977 2991.

Judging the entries for this year's Nottinghamshire Best Kept Village Competition, sponsored by Wilkinsons, is taking place with results in August and presentations in the autumn. One village will be entered into the Calor Gas national competition awards in October.

### Recycling Factory

A £9 million recycling factory is to be built in Mansfield creating around 60 new jobs. The new centre, which is expected to be open in 2005, will sort over 60,000 tonnes of rubbish each year to help the County Council meet government recycling targets.

People who live in the countryside are being offered the chance to find out first-hand what it's like going into business – and it's all for a good cause.

Villages may seem to be struggling to keep essential amenities like childcare and transport, but the organisers of an event on Thursday 18 September 2003 say there's a bright future for a new breed of business which ploughs its profits back into the community – the 'social enterprise'.

For more details and a booking form please contact Nottinghamshire Rural Community Council on 01623 727600.

Nottinghamshire County Council has adopted a corporate style for its publications.

This edition of Countylink has been produced using the new guidelines.

### Macbeth on a bouncy castle

Next Stage has its own theatre company in residence from 4-8 July. The free open air show will be hosted by local community groups forming part of local festivals, while all feature a bouncy castle.

The show, set in a supermarket, is suitable for a family audience and is designed to break down the preconceptions that people have about theatre performances. The performances are at:

Ladybrook Estate Action Group:  
**4 July 7.00 pm**

Shireoaks Carnival Committee:  
**5 July 7.00 pm**

Warsop Carnival Committee:  
**6 July 5.00 pm**

Manton Gala Committee:  
**7 July 7.00 pm**

Byron Festival/Friends of Titchfield Park: **8 July 6.30 pm**

For more information, contact:  
Nicola Tompkins on  
01623 824249.

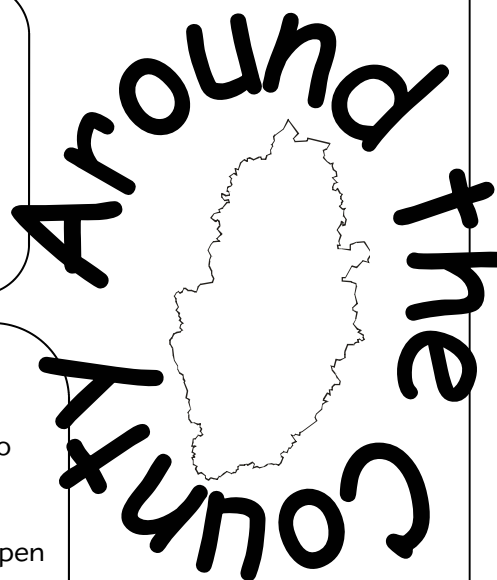
### National Archaeology Days

Join in a weekend of fun for all the family at Newark, Nottinghamshire's finest mediaeval castle:

**Saturday 19 July**  
10.00 am-4.00 pm

**Sunday 20 July**  
10.00 am-3.00 pm

Activities include: Tree Ring Dating, Mediaeval crafts, Mud walling, Geophysics, Guided Tours. For more information ring 0115 977 2160



Receive your Countylink via E-mail

This newsletter is available in all formats

## Welcome

Welcome to the following new clerks:



Mr J Chisholm, Linby Parish Council  
Mr J Chisholm, Newstead Parish Council  
Mr K Brockway, Granby cum Sutton Parish Council  
Mr R Hawkins, Holme Pierrepont and Gamston Parish Council  
Mrs H Hawkins, Cropwell Bishop Parish Council  
Mr J Brough, Wiseton Parish Meeting  
Mr M Elliott, Wysall and Thorpe in the Glebe Parish Council  
Mr Grocock, Keyworth Parish Council  
Mr C Greensmith, Besthorpe Parish Meeting

This newsletter is sent to **Town and Parish Councils/Meetings**, for distribution. Names and addresses are held on a database. I want mail to get to the right people without delay so please help by informing me of any changes as it is my responsibility to inform others within the authority who mail out to parish councils. Parish contacts information, the Code of Practice and this newsletter are on the authority's website at [www.nottinghamshire.gov.uk/parishcouncils.htm](http://www.nottinghamshire.gov.uk/parishcouncils.htm)

Is there an article or information in your local parish newsletter that you would like to share through the next issue of Countylink, or have you an event you would like publicising on the County Council's website? Then please contact me for details.  
Barbara Worrall

### Your County Council contact for:

Changes of Parish Clerk, Requests for extra copies of Countylink, Countylink in other formats, Articles for Countylink, or if you wish to add information/links/photograph of your parish to your details on the NCC Website:

**BARBARA WORRALL**  
Regeneration Division, Culture and Community Department, Nottinghamshire County Council,  
County Hall, West Bridgford, Nottingham  
NG2 7QP

Tel: 0115 977 4085

Fax: 0115 977 3859

E-mail: [barbara.worrall@nottscc.gov.uk](mailto:barbara.worrall@nottscc.gov.uk)

### Your District Council Contacts:

Ashfield District Council, Public Relations  
01623 457004

Bassetlaw District Council, Public Relations  
01909 533726

Broxtowe Borough Council, Public Relations  
0115 917 3743

Gedling Borough Council, Public Relations  
0115 901 3801

Mansfield District Council, Public Relations  
01623 463021

Newark and Sherwood District Council,  
Public Relations 01636 655255

Rushcliffe Borough Council, Public Relations  
0115 914 8555

**Deadline date for articles for the next issue is:**

**19 September 2003**