



Nottinghamshire  
County Council

# Countylink

Issue No 58

October 2003



**BASSETLAW**  
DISTRICT COUNCIL  
NORTH NOTTINGHAMSHIRE



MANSFIELD DISTRICT COUNCIL



NEWARK &  
SHERWOOD  
DISTRICT COUNCIL



Rushcliffe

Countylink

## Circulation to:

**Councillors** at Town and Parish Councils and Parish meetings; County Councillors; District and Borough Councils, interested individuals and organisations.

## In This Issue:

100% Grants for Heritage.....	5
Around The County.....	19
Arts Workshops.....	11
Beacon Update.....	4
Best Kept Village.....	17
Christmas, Christmas, Christmas.....	8
Coalfield Community Fund.....	2
Commons Register Search.....	5
Community Champions.....	3
Community Renewables.....	16
Contacts.....	20
Country Parks - Treasure.....	9
Elm Trees.....	10
England's Landscapes.....	18
EnPROVE IT.....	13
Envirokerb.....	17
Event for Gypsies and Travellers.....	11
Flexline.....	10
Hockerton Housing Project.....	15
Identifying Rural Homelessness.....	12
Illustrated Talks.....	14
Library Renewal Service.....	14
Local Area Forum.....	11
Make Your Voice Heard.....	6
NAVACH.....	18
NAVO Conference.....	18
Neighbourhood Awards 2003.....	12
Neighbourhood Nurseries.....	13
New Clerks.....	20
New Milestones.....	14
New Structure Plan.....	7
Notts RPA Delegated Fund.....	6
Partners Feedback Forum.....	10
Qualifications for Clerks.....	2
Right People for the Right Job.....	3
Rights to Open Land.....	4
Selston Festival.....	9
Telling Tales in Gotham.....	9
The Knock Code.....	15
Try IT.....	15
Victim Support.....	7
Village Connections Website.....	16
Vital Villages Update.....	6
Where's You Bin.....	17

## Planning Must Support Rural Communities and Countryside

Support for thriving rural communities and businesses, while protecting the wider countryside from unnecessary building development, are key priorities for the planning system identified in a new consultation document launched in September. The draft Planning Policy Statement 7 (PPS7) for rural areas of England sets out how planning policies can help raise the quality of rural life and promote more sustainable patterns of development.

Planning Minister Keith Hill said: "The planning system must support rural communities and play its part in protecting the countryside. Planning authorities often face difficult decisions in rural areas where, quite rightly, there is wide public concern to protect the quality and diversity of our countryside. But rural communities cannot just stand still. Sometimes development is necessary to provide the homes and jobs for a community to thrive. Good planning is as important in rural areas as it is in our larger towns and cities."

October 2003

The draft PPS7 proposes policies to ensure most new development in rural areas is focused on existing towns and villages, with priority given to the re-use of previously developed land. New building development away from existing settlements should be strictly controlled, although some development to meet the needs of farming and other rural-based enterprise will be necessary. All rural development should be well designed, sensitive to local character and distinctiveness.

Isolated new houses in the open countryside will continue to require special justification. The current planning policy exception which specifically favours the construction of large houses in the open countryside, has not been included in draft PPS7.

The Government is now keen to hear views on the draft PPS7 from all those with an interest in the well being of rural areas and the countryside. The consultation period will run to 12 December 2003.

Source: Office of the Deputy Prime Minister, website [www.odpm.gov.uk](http://www.odpm.gov.uk)

## **New Qualification For Parish Council Clerks**

All Parish Council clerks can now register for the new Certificate in Local Council Administration by completing their registration form and forwarding a cheque for £55 to the County Training Partnership at the Nottinghamshire Association of Local Council's office in Southwell.

This new Certificate covers such topics as Roles and Responsibility, Planning, Community Action, Finance and Law, and is designed to ensure that all Parish Council clerks have reached a certain minimum level of competence in their work.

The Rural white paper, launched in November 2000, described the Quality Parish Council scheme explaining that one of the key 'tests' which a Quality Council must meet is that they should have a 'competent' and fully trained clerk.

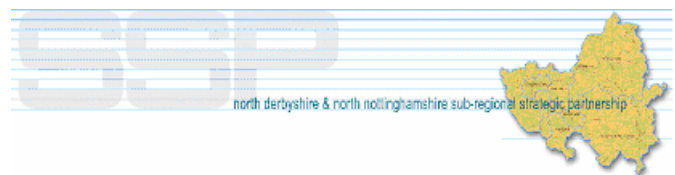
Currently Nottinghamshire has one clerk well on

his way to gaining this qualification, and several others who will be not far behind.

The County Training Partnership hopes to have a formal launch of their training programme associated with the new Certificate shortly.

If you require any further details, please contact Lynda Ogilvie, Lead Officer for Nottinghamshire County Training Partnership at the NALC Office, Minster Chambers, Church Street, Southwell NG25 0HD, Tel: 01636 816890, E-mail, [lynda.ogilvie@nalc.org.uk](mailto:lynda.ogilvie@nalc.org.uk)

## **Coalfield Community Fund**



Since early 1999 the North Derbyshire and North Nottinghamshire Sub-Regional Strategic Partnership has supported community and voluntary sector groups across its geographical area through the Coalfield Community Fund (CCF).

To date the CCF has awarded over £1m to over 400 community group-led projects which operate within specific priority areas. Due to the overwhelming success of the fund, it has been decided to operate it at a district wide level in anticipation of further funding being made available up to 31 March 2006. This means that community and voluntary sector groups operating projects within the council districts of Ashfield, Bassetlaw, Bolsover, Chesterfield, Mansfield, Newark and Sherwood and North East Derbyshire can now apply for funding valued up to £10,000. The next deadline for applications is Friday 14 November 2003.

The CCF acts to 'kick start' projects without the need for the applicant to find funding from other sources. The average successful grant is around £3,000. To be eligible for funding, groups will need a bank account, a constitution, and 2 quotes for any items needing to be purchased. The projects must also show that they can spend all the funding awarded by 31 March 2004.

Local community representatives will make approval decisions on projects. Activities the CCF can pay for could include, for example, equipment costs, feasibility studies, training courses, small building works and other items which are needed for groups to operate. The fund cannot be spent on paying for full time staff or for general running (core) costs.

Application forms can be obtained from the SSP Programme Team based at Unit H1b, Mill 3, Pleasley Vale Business Park, Mansfield, NG19 8RL, by telephone on 01623 819818 or E-mail [pam.ditchfield@nottsc.gov.uk](mailto:pam.ditchfield@nottsc.gov.uk)

## Community Champions

Attention all individuals and community groups involved in local community action across Nottinghamshire! Have you got what it takes to be a community champion?

Got a new project that you are keen to get started in your area? Need some development or training to help get your project off the ground? Want to share skills and experience with others? Then why not consider applying for a Community Champions Grant?



Community Champions is a Department for Education and Skills (DfES) fund and is managed by Nottinghamshire Community Foundation. Last year grants were distributed to 23 groups across the county and it is hoped that this year the NCF will help even more communities.

Community Champions grants, up to a maximum of £2000, are available to individuals working with groups and small community groups involved in local community activity.

Here are some examples of projects which have been funded across the Midlands region:

- Community Champions helped an individual to promote black music history, enabling young people to become more actively involved in music in their area and learn about the history of different types of music.

- Funding was provided to allow a group of volunteer youth workers to come together and take part in training. This enabled them to train other volunteers within their groups across the county.
- Community Champions enabled the set up of a pilot project to provide opportunities for Asian women of all ages to gain access to the Internet. The project is based at a local resource centre and runs one afternoon a week, offering the women an opportunity to explore their potential outside conventional educational settings.

Funding criteria includes: the start up of a new project, gaining new skills, developing volunteers and sharing skills and experience with other like-minded organisations in the community. Community Champions funding cannot be used for large items of capital expenditure, core costs and salaries, or for the continuation of an existing project.

Grants Panels meet every 6 weeks. All projects must be for the benefit of your local community. Funding must be spent by the end of March 2004.

For further information, application packs, or to talk through potential ideas, please contact: Lynn Williams, Grants Officer, Nottinghamshire Community Foundation on 01623 620202. Alternatively, you can download an application form and guidelines from our website:

[www.nottscommunityfoundation.org.uk/funds](http://www.nottscommunityfoundation.org.uk/funds)

## Connecting the Right People to the Right Jobs

A pioneering scheme to help train staff for call centres has revealed the secret of its success at a national landmark exhibition. The Connect Project, set up with funding from Europe, has helped train hundreds of workers to become call centre operators at numerous firms across the county. One of its major successes is with Prolog, one of the UK's leading marketing support and communications firms.

Connect Project manager Chris Calladine, Nottinghamshire County Council and Prolog

Connect business development manager Paul Miller were invited to speak at Call Centre Expo 2003 as part of a presentation on recruitment.

Prolog moved onto the Sherwood Park Enterprise Zone in 1996 as part of its major expansion. The firm has since grown to employ 1,200 staff with a turnover in excess of £30 m and its 400,000 sq ft facility features a multi-million pound call centre and state-of-the-art warehouse, production and office space.

Connect is supported by Nottinghamshire County Council and works in partnership with JobcentrePlus. European Social Fund money has helped Connect teach local people new skills and help them take up available posts. The scheme targeted 400 adults aged between 25 and 49, who fall outside the scope of many other funding schemes and was one of the projects contributing to the award of Beacon Council status to the County Council for removing barriers to work. (See below.)

Contact: Chris Calladine, Nottinghamshire County Council on 0115 956 5938

## Beacon Update

In June, Countylink reported on Nottinghamshire County Council's Beacon award for removing barriers to work.



The award recognises the Council's ability to respond to changing employment patterns, particularly when dealing with people who find it hard to get work.

The Beacon Council scheme exists to allow councils to learn from one another and deliver better services to their communities. Since June, the Council's Beacon team has been putting together a programme of events to share their work with other councils. This will include a Beacon Open Day on 28 January 2004 which will provide delegates with the opportunity to combine workshops with site visits. A joint event with Leeds, Knowsley and Rotherham entitled 'Same Problems: Different Approaches' is

planned for March 2004.

The Council is also producing materials such as a toolkit which will be offered to other authorities interested in progressing the theme of removing barriers to work.

The County Council is currently submitting bids for Beacon status for 2003/2004 under the themes of Services to Older People, Better Local Transport and Early Years and Childcare: the Sure Start Agenda.

For further information on Beacon and these activities, contact [beacon.cc@nottscc.gov.uk](mailto:beacon.cc@nottscc.gov.uk) or visit [www.nottinghamshire.gov.uk/yourcouncil/plans/beaconscheme.htm](http://www.nottinghamshire.gov.uk/yourcouncil/plans/beaconscheme.htm) or telephone the Beacon co-ordinator on 0115 977 3334.

## Landowners Given Right to Open Land for Public Access

Landowners and leaseholders will be able to dedicate land for public access under new regulations recently laid before Parliament.

The changes will allow freeholders and those holding a lease of more than 90 years to dedicate irrevocably land to be open for access to walkers. The effect would be to enable people to enjoy access to that land as a statutory right and to continue to do so even if it was sold. A dedication could also extend the right of access to a particular area to people other than walkers, such as horse riders or cyclists. This will mean new areas opening to walkers and others in some areas, and the formalising of existing access arrangements in others. The regulations came into force on 1 September 2003.

Rural Affairs Minister Alun Michael said: "This represents another step towards implementing the Government's commitment to broadening public access to open countryside. Dedication can both secure new access opportunities, and ensure permanency, clarity, and certainty of access when applied to land where informal access arrangements currently exist. It will also help landowners by limiting the risk of occupiers' liability claims. The Forestry Commission has

already announced its intention to dedicate the national freehold woodland estate in England, which amounts to more than 180,000 hectares. I would encourage other landowners to consider the benefits of using these regulations to formalise access arrangements."

It is expected that Government departments, local authorities, charities, businesses and other organisations which own or lease land will take advantage of the new regulations.

One important advantage for landowners and occupiers is that their liability to those exercising the right of access will be reduced. Rural businesses, such as farm shops and bed and breakfast accommodation, are expected to benefit from the increase in visitors in areas where land has been dedicated for access.

Land which has been dedicated will be subject to the same right of access as open country (mountain, moor, heath and downland) and registered common land as the four million acres which are currently being mapped by the Countryside Agency. The public will have the right to use the land for rambling and other recreation, but will be subject to the same restrictions. People who have dedicated their land will enjoy the same range of safeguards, including the ability to restrict or exclude access for up to 28 days a year.

Contact: DEFRA helpline on Tel: 08459 33 55 77.  
minicom/talktype: 0845 300 1998  
E-mail: [helpline@defra.gsi.gov.uk](mailto:helpline@defra.gsi.gov.uk)

### **Commons Register Search Fees**

The fees payable to commons registration authorities for undertaking an official search of the two registers they hold on common land and town or village greens (relating to the land, rights of common and ownership of such land), will increase to £14 per search, plus £1 for each additional parcel of land but subject to a maximum additional fee of £20, from 1 October 2003. Official searches of the registers of common land and town or village greens are often part of the property conveyancing process.

Such searches are important, particularly in rural areas, because of the additional protection afforded, by legislation, to common land and greens. The last increase in search fees was in 1989. The new fees are prescribed in the Commons Registration (General) (Amendment) (England) Regulations 2003 (SI 2003/2260) which were laid before Parliament on 3 September 2003 and will come into force on 1 October 2003.

Contact: DEFRA helpline on Tel: 08459 33 55 77  
minicom/talktype: 0845 300 1998  
E-mail: [helpline@defra.gsi.gov.uk](mailto:helpline@defra.gsi.gov.uk)

### **100% Grants for Heritage Projects**

Nottinghamshire is currently in second place in a regional survey of heritage projects aimed at celebrating the customs, history and traditions of local communities. The Local Heritage Initiative (LHI) scheme is administered by the Countryside Agency for the Heritage Lottery Fund, with support from the Nationwide Building Society.

One hundred per cent grants of up to £25,000 are available through the scheme and this means projects need no match funding before they can get the green light.

To date, Nottinghamshire ranks second in the region's league table with 18 schemes ranging from geophysical and archaeological studies, to one which aims to research the lives of 100 men named on a village war memorial. Derbyshire tops the league with 27 schemes.

With the help of a £15,000 LHI grant, members of Stapleford Local History Society set up a number of projects to promote the Hemlock Stone, a large imposing landmark nestled on the wooded slopes of a hill. The site has since been used for a series of major community events including a Golden Jubilee event attended by thousands of visitors.

A summary of all LHI projects funded is available from the Project Directory at the LHI website. A search mechanism is available to refine the list of projects to the relevant area of interest. Although the grant scheme is aimed at

community groups, applications will be accepted from local authorities applying on behalf of a local community and for projects which are clearly community-led.

If you know a community that could benefit from grants of between £3,000 and £25,000 for projects that involve communities in investigating, researching and raising awareness of local heritage, contact Lisa Kirman, regional adviser on 01949 876885 For an application pack telephone 0870 9000 401 or visit [www.lhi.org.uk](http://www.lhi.org.uk)

## Make Your Voice Heard

The County Council's Development Control Team deals with a wide range of planning applications for Minerals and Waste developments and for the Council's own development. As part of this process the Team consults a variety of organisations and individuals, including Parish Councils.

The Council considers that it is particularly important that the views of local people are heard. Notwithstanding this, the Council is also required by the Government to make planning decisions as quickly as possible and this is one key element on which the authority is judged in terms of its overall performance.

As part of a whole package of improvements to the planning service the Team is reviewing its consultation procedures and is reminding all consultees of the need to try to stick to the periods set down in planning legislation for comments on planning applications. In the light of this, Parish Councils are requested to make sure that comments are sent to the Council within 21 days from the consultation date.

If this timescale cannot be met, a specific request must be made within that period for an extension of time with an explanation as to why this is needed.

The County Council will reserve its right to make decisions in the absence of comments being made in line with these timeframes. These

arrangements will ensure that planning applications are not delayed and that the views of local people are heard at the earliest opportunity.

For more information contact Chris Hoult, Development Control Team Manager on Tel: 0115 977 4563.

## Notts RPA Delegated Fund

Up to £1,000 funding is available for projects submitted by properly constituted community and voluntary sector groups within the Nottinghamshire Rural Priority Area. Grants are discretionary and should not exceed 50% of the total costs. The maximum grant available from the Delegated Fund is £1,000. Assistance will only be given where at least pound for pound matching funds are available.



Any project which benefits the community as a whole will be considered. Examples of projects include economic development, village appraisals, play schemes, community support groups, small environmental improvement schemes etc. Projects must be located within the Nottinghamshire Rural Priority Areas, should respond to an identifiable community need and bring demonstrable community benefit. Projects should be non-profit making and the fund will not support general running or maintenance costs. The fund is specifically available to support new group activity or one-off community activity.

The eligible wards in each district are:

Bassetlaw: Babworth, Bevercotes, Blyth, Bothamsall, Carburton, Cuckney, Carlton -in- Lindrick, Elkesley, Harworth, Haughton, Hodsock, Holbeck, Nether Langwith, Norton, Rhodesia, Shireoaks, Styrrup with Oldcotes, Tuxford, Welbeck.

Newark and Sherwood: Bilsthorpe, Blidworth, Boughton, Clipstone, Eakring, Edwinstowe, Kirton, Ollerton, Perlethorpe cum Budby, Rainworth, Rufford, Walesby, Wellow.

Central Nottinghamshire: Annesley, Calverton, Felley, Linby, Newstead, Papplewick, Pleasley Hill, Selston, Sutton, Warsop.

Rushcliffe: Cotgrave.

There are no deadlines for applications. Application forms can be obtained from Rachel Hind, Notts Rural Priority Area Fieldworker, Unit H1B, Mill 3, Pleasley Vale Business Park, Pleasley Vale, Mansfield, Nottinghamshire NG19 8RL, Tel: 01623 819808 or 01623 727600 or e-mail: rhind@nottscc.org.uk

## Vital Villages – Grants Update

The Vital Villages programme has proved to be an extremely popular and successful grant scheme. Spending is now being focused to give priority to those communities in greatest need, and although the eligibility criteria remain the same, funds will be targeted to these communities.

**Please contact your local Rural Community Council (Tel: 01623 727600) or Regional Countryside Agency office (Tel: 01949 876200) before making an application, so that they can give you the latest information and guidance as this could save unnecessary work.**

To avoid disappointment please be aware that all Countryside Agency grants are discretionary. Please remember that projects must not start until formal letter of grant are received as projects cannot be funded retrospectively.

The application pack is being reviewed and it may change to reflect our prioritisation of communities in greatest need. If grant applications are likely to be submitted more than two months after you receive this pack, please check with our Call Centre on 0870 333 0170 or the Vital Villages website [www.countryside.gov.uk/vitalvillages](http://www.countryside.gov.uk/vitalvillages) to ensure that you have the most up to date version of the application form and guidance.

## New Structure Plan for the County Unveiled

Nottinghamshire County Council approved a draft Joint Structure Plan [JSP] for the geographic County at its meeting on 25 September 2003. The draft JSP has a Plan period from 2001 to 2021 and reflects Regional Planning Guidance approved last year by Deputy Prime Minister, John Prescott. The JSP is going

to the City Council for approval on 13 October 2003 and if approved, the Plan will be placed on deposit early in November for a six-week objection period. If there are objections, an Examination in Public would be held in the early summer of next year. Final adoption is likely in mid 2005.

When adopted the JSP will replace the current County Structure Plan adopted in November 1996 which has an end date of 2011. Compared to the 1996 Plan, the new JSP places more emphasis on meeting housing and employment land requirements within and on the edges of urban areas whilst meeting the needs of rural areas for housing, jobs and access to services/facilities.

Structure Plans set out the broad framework for land use and transport planning, covering topics such as housing, employment, transport, the environment, leisure and retailing. The Plan consists of a written Statement setting out policies and a Key Diagram. The Plan sets the context for Local Plans which make detailed proposals shown on an Ordnance Survey-based Proposals Map. The JSP would also be used when Planning authorities determine [major] planning applications.

Pre-print drafts of the JSP are available from the Planning Team, Culture and Community Department at County Hall. When the Plan documents are printed, all Parish and Town Councils will receive a letter inviting comments on the Plan and containing an order form for a free copy of all the supporting documents should these be required.

Although the term used above is the 'objections' period, you may also write in with supporting comments where you agree with the policies in the Plan. At this stage for the 1996 Structure Plan, about 25% of Parish and Town Councils responded and five Councils were invited to the Examination in Public to put their case before the independent Panel.

It is important that both County and City Councils hear the views of local Councils. Please ensure that your voice is heard.

Contact: Richard Ling, Nottinghamshire County Council  
0115 977 4540 E-mail: [richard.ling@nottscc.gov.uk](mailto:richard.ling@nottscc.gov.uk)

## Victim Support

Victim Support Nottinghamshire celebrated its Annual Review at during the summer at County Hall. Over 100 guests were present, including the Vice Chair of Nottinghamshire County Council, The High Sheriff of Nottinghamshire and other local Mayors, Deputy Mayors and Chairs of local Councils. Local speakers at the event paid tribute to the various partnership agencies of the Charity, all of who had helped throughout the year, namely the Police, Crown Prosecution Service, British Transport Police and Probation. Heartfelt thanks also went out to the 200 volunteers across the County who help victims of crime and witnesses in the criminal courts, alongside staff and Board members. The guest speaker, Dame Barbara Mills DBE, QC, from the National Victim Support Board of Trustees, spoke about an exciting future for the Charity, on both a National and Local level.

Victim Support is holding a Charity Christmas Party on 19 December 2003 at Notts County Football Club 12.30-5.00 pm. £19.95 per person. For a booking form contact:

Victim Support Nottinghamshire Area Office, 2 King Edward Court, King Edward Street, Nottingham NG1 1EL  
Tel: 0115 852 3508 Fax 0115 950 5906  
E-mail: [county@vsnotts.org](mailto:county@vsnotts.org)

## Cheer Up A Child This Christmas

ChildLine East Midlands and East Anglia has a card up its sleeve this Christmas – a unique way for local organisations and businesses to spread a little festive cheer and help the local children’s helpline – all for the price of this year’s Christmas cards. Joining ChildLine’s Alternative Christmas Cards Appeal couldn’t be simpler. All you have to do is forget the cards you usually deliver – and all the time you spend writing them – tell your friends that this year you’re donating the money you’ve saved to



ChildLine - and ask them to do the same. ChildLine will then send a communal card to your workplace for everyone to sign.

That way you’ll help the hundreds of children from Nottinghamshire who call ChildLine over the twelve days of Christmas. Children who don’t find Christmas a happy time of the year. Children like Cara who had to spend Christmas alone, or Stephen whose dad gave him a beating as a Christmas present.

Taking part is really easy. ChildLine East Midlands and East Anglia will provide you with a comprehensive pack including posters and a sign-up card – everything you need to make at least one child happier this Christmas. You’ll be in good company too as last year around 275 organisations took part and their Christmas gifts totalled over £21,000. To help ChildLine East Midlands and East Anglia raise even more money than last year, sign up to the Alternative Christmas Card Appeal now and help them to help children this Christmas. Call Rebecca Patterson on 0115 924 2544 or email [midlands@childline.org.uk](mailto:midlands@childline.org.uk)

## Christmas Market

The County Council will hold its 5th Christmas Market at County Hall on Sunday 30 November 2003 during 11.00 am-3.00 pm. All proceeds this year will go to the Chairman of Nottinghamshire County Council's Charity, Portland College for the disabled. The event will include: Craft stalls, Santa’s Grotto, a Brass Band and the Christmas Tree Switch on at noon in association with Rainbows Children’s Hospice ‘Light of Hope’ Appeal. 50p admission, children free. Free parking.

Single Stall £33.00, Double Stall £60.00. To book your stall, please contact the Civic Office on Nottingham 0115 977 3244



## Christmas Lights Switch On

A Christmas event will be taking place on Saturday 22 November 2003 on Central Avenue, West Bridgford. There will be a

farmers' market, art and craft stalls, fairground rides and special Christmas entertainment throughout the afternoon in the form of street theatre. The Mayor will switch the Christmas lights on at 5.00 pm. Central Avenue will be closed to traffic. Contact: Rushcliffe Borough Council Tel: 0115 981 9911

## Selston Festival

Preparations for the Selston Festival continue apace with over 25 different stalls booked for the arts and crafts market. The market will be held on Saturday, 15 November 2003 in the Selston Parish Hall, Mansfield Road, Selston.



The market will provide an excellent opportunity for some early Christmas shopping. Goods on sale will include handmade cards, hand-dipped candles, ceramics and a wide range of pickles and preserves. The Selston Sunshiners' popular selection of homemade bakes will also be on sale to revive weary shoppers!

The theme for this year's festival is the Roaring 1920s and the market will be given an authentic feel by live music and 1920s dance demonstrations.

In the evening, the Rolls Royce Leisure Musical Theatre Company will put on a lively programme of entertainment at the Selston Parish Hall. With only 100 tickets on sale, the evening is sure to be a sell-out. The Selston Festival is organised by local people through the Selston Local Area Forum.

Contact: Leigh Marchant, Development Officer, Regeneration Division, [leigh.marchant@nottsc.gov.uk](mailto:leigh.marchant@nottsc.gov.uk) Tel: 0115 977 3334

## Telling Tales in Gotham

Rushcliffe Borough Council, in partnership with Gotham Parish Council and local villagers, is launching a book in early October - Telling Tales in Gotham - about the world-famous 'noodle' stories. The tales (originally from the time of King John in the



12th/13th century) have been re-told for the 21st century. This project has been made possible with a Heritage Lottery Grant - and, as well as the book, a video of the stories being performed was made in May 2003 and a village trail depicting the sites of the stories will be carried over the next few months.

More details can be found at [www.lhi.org.uk/projects\\_directory/projects\\_by\\_region/east\\_midlands/nottinghamshire/telling\\_tales\\_in\\_gotham/index.html](http://www.lhi.org.uk/projects_directory/projects_by_region/east_midlands/nottinghamshire/telling_tales_in_gotham/index.html) or from Sharon Scaniglia on 0115 914 8219

## Country Parks – A Forgotten Treasure?

Country parks, a lasting and popular legacy of the Countryside Act 1968, are more important to society today than ever before but they are at risk of neglect and decline and action is needed now to ensure they have a better future, according to the Countryside Agency.

The Countryside Agency commissioned the Urban Parks Forum and the Garden History Society to undertake a health-check of country parks. *Towards a Country Parks Renaissance*, is available on the Countryside Agency's website and reports the findings of that research. It establishes the current condition of country parks, and makes recommendations for their future management. It emphasises the important role country parks play in providing quality landscapes for people to enjoy around our towns and cities.

The report shows that:

- There are 267 country parks in England which cover in the region of 39,000 hectares;
- The gap between well managed parks and poorly managed parks is continually widening;
- There is a consistent decline in the finances available to country park managers;
- Country parks receive an estimated 73 million visits per year. They offer a range of recreational opportunities and services for everyone;
- Country parks are very successful in attracting volunteer involvement.

The report makes recommendations including:

- A single shared 'country park' identity and common goals;
- Development of a set of minimum quality/ service standards;
- Training and support for staff; and
- A programme to develop the links between town and countryside, and between 'people' as well as 'place'.

The Countryside Agency is working with partners to address the recommendations through support and development. See the report at: [www.countryside.gov.uk](http://www.countryside.gov.uk)

## Elm Trees

Walking is the most popular form of exercise in Britain with 62% of people listing it as their main form of exercise. So when the Natural History Museum wanted to discover the location of the UK's mature elm trees they enlisted the help of the country's largest walking group - the Ramblers' Association. When Dutch elm disease devastated the countryside in the 1970's, just 10% of our elm trees survived. Botanists have never been able to find a cure for the disease but it's thought that the mature trees which survived the 70's outbreak may hold the key. So they've enlisted the help of walkers to spot and record the location of all the elms across the UK.



Once the elm map has been created, scientists are then planning to go out and visit the trees. They will be looking not only for exceptional qualities that may have protected them against disease but also studying the unique life-forms the trees support.

Contact: Ramblers' Association 2nd Floor, Camelford House, 87-90 Albert Embankment, London SE1 7TW  
Tel: 020 7339 8500 Fax: 020 7339 8501  
E-mail: [ramblers@london.ramblers.org.uk](mailto:ramblers@london.ramblers.org.uk) website: [www.ramblers.org.uk/elms/default.htm](http://www.ramblers.org.uk/elms/default.htm)  
Natural History Museum (for information about lichens and fungi that live on elm trees) [www.nhm.ac.uk](http://www.nhm.ac.uk)

## Flexline

Imagine a bus service that collects you from your nearest bus stop when you call to book a ride. Well that's happening in parts of North Notts through the RENEW project funded through rural bus challenge grant. Flexline is that service! and is operated by a dedicated 16 seat stylish, comfortable minibus.



People living in isolated rural locations east and west of the A1 between Retford and Newark can book the bus by ringing a free phone number and request to be collected from their nearest bus stop and taken to join the regular bus route into town.

Flexline was successfully launched by Councillor Butler in July. There has been a steady start but take up is encouraging and continuing to grow with some regular passengers!

As well as the demand responsive element, Flexline offers some fixed journeys - a works' run serving the Industrial estates in Tuxford, market day services to enable shoppers to reach Newark and Retford, and a schools' run to the new Retford Oaks High. There are also plenty of opportunities for individuals to call and request a specific journey whether they want to visit friends or fancy a night out in town.

We want to know what you think. So please let us have your comments /ideas. The beauty of Flexline is that it is just that - Flexible!

To book Flexline or for more information call Marshall's of Sutton-on-Trent, your Flexline operator on free phone 0800 587 5662.

## Partners' Feedback Forum

Nottinghamshire County Council is committed to partnership working and is always interested to hear from partners. We are therefore running a six month pilot called the Partners' Feedback Forum.

The feedback forum is designed to address issues arising out of our partnership working that need to be discussed and reconciled where possible. We are also happy to receive any compliments about our work with you!

The Partners' Feedback Forum is available on the County Council's website (see below) and leaflets will also soon be available for distribution. We are running this feedback forum as a pilot for 6 months and will then evaluate its success and decide whether to continue with it.

Your comments or suggestions can be made by completing the electronic form on our website as follows: [www.nottinghamshire.gov.uk/home/yourcouncil/partnerships](http://www.nottinghamshire.gov.uk/home/yourcouncil/partnerships). Leaflets with the feedback form included will also soon be available.

We will ensure that the relevant person receives your comments and aim to respond to you within 20 working days. If the issue you raise needs more detailed consideration then we will tell you. That might mean our response takes a little longer or we can suggest ways of resolving it.

(Many of our partnering arrangements allow for mediation or dispute resolution. This facility does not override or substitute those processes which should be used where appropriate. If you wish to make a complaint please refer to our corporate complaints procedure.)

Leigh Marchant, Development Officer, Regeneration Division E-mail: [leigh.marchant@nottscc.gov.uk](mailto:leigh.marchant@nottscc.gov.uk)

## North Broxtowe Local Area Forum

North Broxtowe Local Area forum organised an extremely successful Older Persons' exhibition at Kimberley Parish Hall in September. A small working group invited a range of statutory and non-statutory organisations to bring along information, dispense advice and chat through problems with older people from Kimberley, Eastwood and surrounding villages in the north of the borough. Among the 20 or so organisations represented were the Pensions Service, a variety of health services, Alzheimer's Society, a local art group, the Volunteer Bureau,

British Red Cross, Broxtowe Borough Council, Energy Advice, the Beauvale Belles and Arthritis Care. Over 200 older people attended the event and free beauty gifts were donated by Boots plc. Over 70 people completed feedback forms; these showed that people were very pleased to have attended the event, had generally learned something new from it and that they would like another similar event organising, perhaps in Eastwood, next year.

The local area forum worked hard to promote the event and to help with transport; but the hard work was well worth it! The forum will discuss the outcomes of the event and will probably organise a further one next year in late spring – perhaps this will be even better!

For more information, please contact Kath Farmer, Nottinghamshire County Council on 0115 977 3853 E-mail: [kath.farmer@nottscc.gov.uk](mailto:kath.farmer@nottscc.gov.uk)

## West Bridgford Arts Workshops

In March 2003, the West Bridgford Local Area Forum consulted local people on arts provision in their area. Over 600 people attended and asked for more arts classes to be held.

In response, the West Bridgford Local Area Forum recently organised a highly successful series of workshops to coincide with the Rushcliffe Festival. The art forms were selected by local people during the consultation exercise and included mosaics, glass painting, pottery and stained glass. In total, 120 places were available on a range of workshops.



Children were also catered for, with a kids' ceilidh and instrument making session, using recycled items such as plastic bottles, cardboard tubes and wrapping paper. Two large, colourful monsters led the children in a series of dances, while other members of the Monster Massive provided the music.

## Fun and Information Event for Gypsies And Travellers

Nineteen children and women from sites in Nottinghamshire gathered at Newstead Miners Welfare Community Centre during the summer to take part in a variety of activities funded through the Local Network Fund for Children and Young People. Set up in conjunction with the Nottinghamshire Community Foundation, and supported by Gedling Play Forum, Gedling Primary Care Trust, the Biodiversity Action Group, St John Ambulance and a variety of Newstead resident specialists, this enabled the children and women to discover and demonstrate a number of skills and interests which will now be the subject of applications to the fund.



Activities included: making drum music, making a video, craft activities, face painting (pictured), hair braiding, henna tattooing, first aid, aromatherapy and various kinds of massages.

Everyone who was involved voted the day a great success and plans are in hand to replicate the event around the county.

## Neighbourhood Management Awards 2003

A new awards scheme has been launched by the Government to recognise the hard work and achievement of local people and organisations improving services in their neighbourhoods through local management initiatives. Nominations for the Neighbourhood Management Awards 2003 are being invited from anyone who wishes to reward the success of residents and local organisations in the local service sector who are engaged in or developing neighbourhood management.

The 11 categories include personal achievement awards for residents, neighbourhood managers, elected members and service providers, youth

engagement and partnership of the year. Winners will receive £1,000 to be used on neighbourhood management-related initiatives or activities to benefit their local community.

Nomination forms can be accessed on the web site [www.neighbourhood.gov.uk](http://www.neighbourhood.gov.uk) or by telephoning AVA Ltd, 020 7227 3467. Deadline: 14 October 2003

## Identifying Rural Homelessness

Carole Turner the Rural Housing Enabler (RHE) at Nottinghamshire Rural Community Council (RCC) recognised that due to the lack of evidence, the needs of rural homeless people were not being met. To put the point simply – housing accommodation specifically for young single independent people was not being provided because no authority or agency has a duty to gather statistics for this age group. Local housing authorities have a duty to record the number of elderly people in housing need and to record the number of families in housing need. Social Services have a duty to ensure that children's housing needs are addressed. The housing needs of 'non-priority', 'not at risk' single people aged between 18 and 25 years are rarely registered with the statutory providers of accommodation; this means there is insufficient evidence to support one of the greatest unmet needs of this century – homes for young single independent people in rural areas.

In an attempt to address this, Carole, with the help of colleagues, developed district wide voluntary and statutory inter-agency fora throughout Nottinghamshire and promoted a co-ordinated survey of all clients presenting to the agencies operating in each of the districts. All the 7 district fora are now conducting either year long surveys or, at the very least, annual 2 to 4 week snapshot surveys of all people presenting as homeless in their catchment areas. These surveys have done two things:

- First they have proved without doubt that the rural areas of Nottingham have a serious homelessness situation. For example a yearlong survey in the district of Bassetlaw, with a population of 104,000, identified 650

homeless 16 to 25 year olds. Surveys in other districts are producing similar figures.



- Second they have produced evidence to persuade the housing providers that there is a need for more single person accommodation. Since the first surveys began in 1996, to date there have been over 135 single person flats developed in rural Nottinghamshire.

For more information contact Carole Turner. Rural Housing Enabler (RHE) on 01623 727600 or E-mail: [cturner@nottscc.org.uk](mailto:cturner@nottscc.org.uk)

## Neighbourhood Nurseries Initiative Update

The Neighbourhood Nurseries Initiative is an ambitious national programme to increase childcare provision in deprived areas, with a target of 45,000 new childcare places open by March 2004, so that parents can consider returning to work or training.

Good progress is being made in Nottinghamshire, with 5 Neighbourhood Nurseries now open. 210 new daycare places have already been created, providing quality childcare for children aged from 6 weeks to 5 years of age, and Notts Early Years Development and Childcare Partnership is set to exceed the target of 500 new daycare places.

The first Neighbourhood Nursery to open was the Springfield Nursery at the Pleasley Landmark Centre, and 60 children are now using the 40 new full daycare places. Many of these parents are using registered childcare for the first time, and are returning to work or training.

During Spring 2003, Claremont Nursery School in Retford, Vicar Water Day Nursery in Clipstone, Kite Early Years in Carlton-in-Lindrick and Toy Box Nursery in Boughton all opened for business. They were joined in September by a 17 place extension at Nurseryworld and Friends in Sutton-in-Ashfield, and two Neighbourhood Nurseries for Kirkby-in-Ashfield, operated by Ashfield Sure Start and Rocking Horse.

Funding and planning permission has also been approved for the Shaping Futures Nursery in Warsop and Mansfield Children's Community Centre at Ladybrook Primary School. Both these Neighbourhood Nurseries will be attached to new Sure Start Centres. Newark's Neighbourhood Nursery will be located on the Hawtonville estate. With funding and planning permission now secured, an opening date of February 2004 is being aimed for. Projects elsewhere in the county are still being developed, with the deadline for opening set for March 2004.

As well as bringing much needed childcare to many of the county's most disadvantaged wards, the initiative will also bring childcare jobs, as a requirement of the funding is that staff are recruited locally whenever possible. Another positive outcome from the initiative is that several unused buildings and derelict sites have been improved and brought back into community use.

For more information on the Neighbourhood Nurseries Initiative, please contact Diane Tinklin, Neighbourhood Nurseries Co-ordinator based in Regeneration, Learning, Skills and Employment at Nottinghamshire County Council. Tel: 0115 977 4682 E-mail: [diane.tinklin@nottscc.gov.uk](mailto:diane.tinklin@nottscc.gov.uk)

## EnPROVE IT

EnProve's computer recycling project has been running for over 2 years, reconditioning disused PC's and computing equipment, whilst also providing on-the-job training in computer skills for unemployed people.



EnProve offers a free collection service for businesses and individuals anywhere in Nottinghamshire. The unwanted or damaged hardware is then refurbished onsite by a skilled team of computer technicians and former unemployed people – recruited through the Government's New Deal scheme. This is extremely bright news for charities and community groups in the area, as the revamped systems are then made available to them at specially discounted rates.

During its first two years of operations, the programme has been an unrivalled success, with over 1000 computers recycled and given a new lease of life.

The project sticks to the tried and tested EnProve formula of providing the unemployed with paid employment for up to a year with the chance to attain a relevant NVQ and any necessary support employees may require.

New Deal, the Coalfield Regeneration Trust, ESF and the Single Regeneration Budget (SRB) fund EnProve IT.

If you have any unwanted IT equipment, or are in need of a low-cost refurbished computer system, please contact Paul Webster on 01623 666710 or by e-mail at [pwebster@groundwork.org.uk](mailto:pwebster@groundwork.org.uk)

## New Milestones

New Milestones is looking for people in the villages of Coddington, Collingham, Winthorpe, Norton Disney, Swinderby and Thorpe on the Hill to contribute local knowledge that will inspire a commissioned piece of music composed by Jo Freya, and, an interactive CDROM that will illustrate the information gathered throughout the project.

The project celebrates the real links between the areas and their communities as symbolised by the dualling of the A46, exploring the history of the road and the stories of six neighbouring villages and communities that border it, focusing on their shared characteristics and what makes each special and distinct.

In pondering the consequence of the road works on local communities, 'New Milestones' will engage people in a process of participation and collaboration to express their common cultural heritage and their local distinctiveness. This should assist the creation of a forum in which discussing the changes brought about by the A46 development can lead to taking ownership of the road so that it serves not as a border or a barrier but as a tool for access and communication.

Local knowledge, stories, ideas and views will determine a piece of music, composed by Jo Freya and performed by participants, and an interactive CDROM illustrating all the information gathered by participants; the project will highlight local identity and particularity: a neighbourhood street, legends, customs, language, recipes and memories. If a place is seen only as a signpost on the side of a road, there is no ownership of that place and it loses meaning to anyone, local or otherwise.

New Milestones is a collaboration between North Kesteven and Newark and Sherwood District Councils, Lincolnshire and Nottinghamshire County Councils and NKArts.

Please contact: Henrietta Clavering, Researcher, Tel: 01636 626439 E-mail: [henriclavering@aol.com](mailto:henriclavering@aol.com)

## Illustrated Talks

A series of illustrated talks is being held at Mansfield and Sutton-in-Ashfield libraries during the autumn. Tickets are available at respective libraries, or pay on the door at each event.

If you wish to be on a mailing list to receive a leaflet for current/future series, or for any other enquiries please contact the Admin Office at Mansfield library on 01623 627591.

Illustrated Evening Talks at Sutton-in-Ashfield Library 7.30–9.00 pm – Tuesdays  
14 October 2003, Gordon Gadsby, Himalayan Journey  
28 October 2003, Tim Preston, Wollaton Hall and Park  
11 November 2003, Tony Waltham, North through Norway and Spitsbergen

Illustrated Evening Talks at Mansfield Library 7.30-9.00 pm – Thursdays  
23 October, Tony Williams, Italy

Afternoon Talks 2.30-4.00 pm – Thursdays  
6 November 2003, Barbara Gallon, The Mansfield We Knew  
20 November 2003, Judith Carnegie-Brown, Tigers and Temples

50+ Club Mansfield Library 2.00 pm Tuesdays  
14 October 2003 The Golden Days of Hollywood  
11 November 2003 Mediation and Relaxation

9 December 2003 A Performance by Mansfield and District Male Voice Choir  
 13 January 2004 Flora and Fauna – My Way  
 10 February 2004 Love poems for Valentine's Day  
 9 March 2004 – Hats, Hats, Hats

## Library Renewal Service

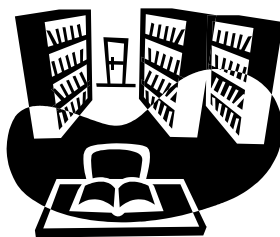
Nottinghamshire County Council's library services now has an automated telephone renewal and information service. Simply by dialling 0845 330 4435 library users will be able to:

- access a range of information about libraries including how to join, opening hours and so forth,
- renew some or all of the items that they have out on loan find out their current status with the service, ie how many items they have out on loan, what they are and if they owe any fines.

All calls are charged at the local rate and the service is available 24 hours a day 7 days a week.

## Try IT

Try IT, a 3-year project has just started in 8 Nottinghamshire libraries. The aim is to increase the use of NEWLiNC in the



most deprived areas in the County by running a series of basic computer skills and Internet training sessions. So far most of the training has been carried out by library staff, using skills they have learnt on the New Opportunity Fund (NOF) training courses. The 8 libraries involved in the project are Clipstone, Ladybrook, Kirkby, Mansfield, Mansfield Woodhouse, Newark, Warsop and Worksop.

## HHP Receives Lottery Funding Towards Sustainable Resource Centre

The Hockerton Housing Project (HHP) has received a significant boost to its plans to develop as a Sustainable Resource Centre (SRC) through a National Lottery grant of £49,619 from the New Opportunities Fund (NOF),

awarded by the Social, Economic and Environmental Development (SEED) Programme. The plan is to develop new amenities focused around an 'eco-community building' situated near to and complementing the houses, including a dedicated audio-visual room, seminar facilities and permanent exhibitions. The building itself will be built to similar high environmental standards as the homes, including meeting the zero heating and zero CO<sub>2</sub> standards. This means that it will not require any form of dedicated heating and will generate as much clean renewable energy as it uses.

You can find out more background information about the Sustainable Resource Centre and the SEED Programme by going to the website at [www.hockerton.demon.co.uk](http://www.hockerton.demon.co.uk) under NEWS.

HHP autumn tours and workshops:

Tours (Saturdays 1.00-3.30 pm):  
 Saturday 1 November 2003  
 Saturday 29 November 2003  
 31 January 2004  
 28 February 2004

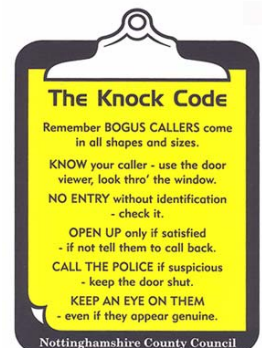
Workshops (10.00-4.30 pm)  
 Saturday 25 October 2003

Tours and workshops can be booked via the website at: <http://www.hockerton.demon.co.uk/guidedtours/booking.html> or E-mail: [hhp@hockerton.demon.co.uk](mailto:hhp@hockerton.demon.co.uk)

For Technical Consultations, EcoScopes or to organise a dedicated tour for your organisation/group please contact us either via email or phone: 01636 816902.

## The Knock Code

Nottinghamshire County Council's Social Services Department has teamed up with Nottinghamshire Police and Mansfield Primary Care Trust, to provide some simple advice to prevent people falling prey to bogus callers at their homes. It is called the 'Knock' Code and it provides some simple rules to follow before answering the door to strangers.



The Knock Code is:

- K now your caller – use the door viewer, look through the window
- N o entry without identification
- O pen up only if satisfied
- C all the Police if suspicious
- K eep an eye on them – even if they appear genuine.

Stickers are available in many languages from the County Council's website or your nearest County Contact point. They should be stuck inside the door and act as a reminder of what to look out for every time there is a knock at the door.

## Village Connections Website and Travel Club Launch

The Village Connections travel information website has been launched! Do you need to plan a journey? Check bus or train timetables? You can Book tickets online? Then log on to [www.villageconnections.org.uk](http://www.villageconnections.org.uk) and look in the links section to get help with the information you need.

On the website you'll also find information about the Village Connections Travel Club, an information shop that will be appearing in the communities all over the Meden Valley area. At the Travel Club sessions you'll get help and advice on anything transport related, such as help with journey planning, getting up-to-date bus and train timetables, using the internet to get travel information etc. If you have any suggestions about public transport then we want to hear about it. See the schedule online to check when the Travel Club is in your area.

For further information please contact Wendy Honeyman-Smith or Austin Booth, 01623 727607, or e-mail: [info@villageconnections.org.uk](mailto:info@villageconnections.org.uk).

## Community Renewables Initiative

You will be aware that there is an increasing concern about the rate at which we are using the earth's resources, especially how we produce and use energies such as electricity and gas to

provide heat, light, and power. With an increasing world population and decreasing stock of fossil fuels, the CRI has been looking at renewable energy sources such as biomass biogas, energy from waste or water, harnessing the wind and solar energy. The Community Renewables Initiative is coordinated by the Countryside Agency, with support from many government and industry bodies, environmental groups and charities. For more information go to: [www.est.co.uk/renewables](http://www.est.co.uk/renewables).

The Government is now taking this issue seriously and has been working extensively to address the production of energy in the United Kingdom to encourage people to use energy more wisely in all environments eg asking local authorities to produce energy plans.

The idea behind the Community Renewables Initiative (CRI) is that 'communities' – which includes businesses, farmers, community associations, local residents, local government and others, will be supported to suggest, plan for, get funding for, develop, own, manage, and take energy and an income from renewable energy projects which are appropriate to their community needs. Projects could even be funded by an energy production company. What the project aims to do is to complement existing structures and partnership working, and plans within communities and work with 'communities'

Community  
Renewables  
Initiative



The  
Countryside  
Agency

and other support organisations to develop solutions that are meaningful to local people. The CRI is not new thinking, there have been energy consultancies for many years. What the CRI offers is the combination of sustainable energy project development AND the community empowerment and partnership approach to renewable energy development.



Within England there are 10 Local Support Teams whose role it is to support people with ideas about renewable energy projects. In the East Midlands, in the recognition of the large geographical coverage, the CRI project is being delivered from two sites, with the northern part of the East Midlands (Nottinghamshire, Derbyshire, High Peaks and Derbyshire Dales, and Lincolnshire) being supported by a Project Worker based in North Nottinghamshire. Workers are supported by a Regional Advisory Group, made up of a variety of local energy experts. They also have the support of a National Advisory Group and National Co-ordination Unit, as well as a network which works together around sharing skills, training, information, and experience.



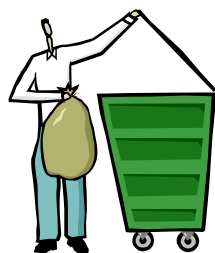
If you live in the East Midlands and think that you have an idea for a renewable energy project such as a wind generator powering a scout hut, or to a replacement wood burning boiler in a school, or a combined heat and power scheme providing heat, light, power, then contact us:

Northern East Midlands: Murray Hunter, Sherwood Energy Village, Boughton Pumping Station, Brake Lane, Boughton, Newark, Notts, NG22 9HQ.  
Tel: 01623 860222. E-mail : [mhunter@sev.org](mailto:mhunter@sev.org)

For more information about the Community Renewables Initiative go to [www.countryside.gov.uk/communityrenewables/](http://www.countryside.gov.uk/communityrenewables/)

### Where's You Bin?

Broxtowe Borough Council recently presented a cheque for £2,000 to Save the Children Fund from their Blue Bag Paper Recycling Scheme. Cheshire Recycling has donated £1 for every tonne of paper collected from Broxtowe kerbsides. The scheme which started in April 2002 has collected the equivalent in weight to over 3,200 elephants. Blue bags for Broxtowe residents are available from 0115 917 3650.



A green-lidded wheeled bin will be delivered to some Broxtowe Borough Council residents during October to expand its Twin Bin Scheme. The green-lidded bin will be for cardboard, plastic, cans and tins. These 2 bins will be emptied on alternative weeks.

Four new refuse lorries, which meet all European standards for vehicle emissions, were purchased in August by Broxtowe Borough Council as part of their on-going vehicle replacement programme. Refuse vehicles have an average life-span of 7 years and carry around 11-1/2 tons of rubbish.

Rushcliffe Borough Council has received notification that recycling2go (twin bin kerbside recycling and wheeled bin service) has been short listed for a Green Apple Award. The Council will have to wait until the ceremony on 6 November at the House of Commons to ascertain what level of award has been won.

### Best Kept Village Competition 2003

New village champions appear in this year's Best Kept Village Competition. The judges were highly impressed by the excellent level of community involvement and in some cases made follow-up visits before decisions were finally made.



Category A:  
Winner – **Edwinstowe**  
Runner-up – **Jacksdale**

Category B  
Winner – **Coddington**  
Runner-up – **Sutton Bonington**

Category C  
Winner – **Oxton**  
Runner-up – **Sturton-le-Steeple**

Category D  
Winner – **Granby**  
Runner-up – **Bothamsall**

Best New Entrant – **Caunton**

Certificate of Merit:

**Calverton, Collingham, Farndon, East Bridgford, Laneham, Orston, Whatton-in-the-Vale**

Prize-winners will be presented with cheques at the Nottinghamshire Association of Local Council's (NALC) AGM on 12 November 2003.

Contact: Mrs Valerie Gillespie, County Organiser Notts CPRE on 01636 813560

## **Envirokerb**

A new and innovative recycled material is being used for the first time ever by Broxtowe Borough Council as part of major maintenance works on the A6007 Ilkeston Road, Stapleford, The £150,000 project includes improvements to the highway drainage and kerbing.

The composition of Envirokerb is 100% recycled materials, which is comparable in cost but 34% lighter than traditional materials, strong, robust and also complies with all environmental management policies.

Contact: Broxtowe Borough Council on 0115 917 3693

## **England's Landscapes will Help Boost Rural Revival**

At a DEFRA seminar during the summer Rural Affairs Minister Alun Michael urged all those with a stake in the countryside to work together more closely to help develop tourism and make the most of the new opportunities which will be afforded through the Government's programme to create greater access to the countryside for walkers. England's finest landscapes can make a major contribution to the economic regeneration of rural communities.

The reform of the Common Agricultural Policy represents a real shift in policy and will provide a sustainable base for farming to reflect the wider environmental and rural objectives which society seeks to achieve. Each region produced Statements of Intent detailing how the various regional stakeholders such as National Parks, Areas of Outstanding Natural Beauty, Regional

Development Agencies and government departments could work together for the achievement of common aims.

Source: [www.defra.gov.uk](http://www.defra.gov.uk)

## **NAVACH**

The Nottinghamshire Association of Village and Community Halls (NAVACH) has produced a leaflet setting out their aims. They are an organisation which supports community buildings that are run for the benefit of members of local communities. To become a member there is an annual membership subscription with benefits such as training, free advice service, technical support, workshops and seminars. A quarterly newsletter is produced containing information about legislation, funding sources, news of community buildings etc.

For more information contact NAVACH, c/o Nottinghamshire Rural Community Council, Newstead Miners Welfare Community Centre, Tilford Road, Newstead Village, Nottingham NG15 0BS Tel: 01623 727600  
E-mail: [navach@nottsccc.org.uk](mailto:navach@nottsccc.org.uk)

## **Nottinghamshire's Voluntary Sector— Delivering the Community Strategy**

On Tuesday 4 November 2003 Networking Action for Voluntary Organisations (NAVO) are organising a conference, to be held at Newstead Miners Welfare Community Centre. The conference will focus on 2 themes, Community Safety and Health and Care highlighted in the Countywide Community Strategy. The keynote speaker will be Jane Todd, Director of the Government Office for the East Midlands (GOEM).

NAVO will also hold their AGM as part of the day.

For further details contact NAVO on 01623 651170 or E-mail: [NAVOL@aol.com](mailto:NAVOL@aol.com)

Broxtowe Borough Council has produced a leaflet for their Guided Walks, and Walks and Talks programme up until March 2004.

Leaflets are available from Broxtowe Council offices or telephone 0115 977 3743

Cotgrave Town Council has changed their website name. It was not an easy process by all accounts but the clerk's hard work has paid off.

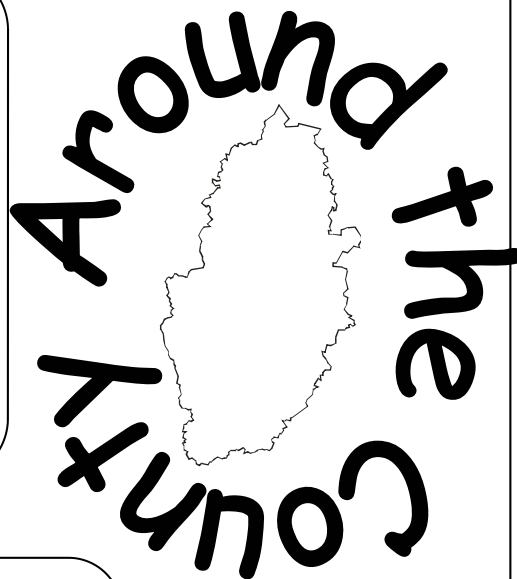
Visit their website at:  
[www.cotgrave-tc.gov.uk](http://www.cotgrave-tc.gov.uk)

Like to learn a new language? take up a new craft? Durban House Heritage Centre in Eastwood is hosting a range of 10 week courses.

For more information  
Tel: 0115 910 0100

The launch of the County's Christmas Toy Appeal for needy children in the county will take place on 14 November 2003.

For more details contact Diane Williams Social Services at County Hall 0115 977 3923



The Ravenshead Newsletter is now available on line at:

[www.ravensheadnewsletter.co.uk](http://www.ravensheadnewsletter.co.uk).

The newsletter has been in production for over 30 years.

With Autumn nearly upon us the Greenwood team is looking for ideas or events that may be taking place in schools and communities to celebrate Seed Gathering Sunday (12 October) Apple Day (21 October), and National Tree Week (26 November – 7 December). Planting trees around estates and schools has many benefits and makes the areas where we live a more pleasant places. Did you know that trees help to reduce noise, filter harmful rays and dust particles in the air?

There are small grants of up to £250 available for tree planting events, and last year over 2000 trees were planted in neighbourhoods around Greenwood by local residents, schools and voluntary groups. For further information, or help with promoting events please contact the Greenwood Team on 01623 758231. The Greenwood team is working with local authority partners to create a new Community Forest on the doorsteps of over 1 million people in and around Nottinghamshire.

The Campaign for the Protection of Rural England has conducted a survey of Market Towns and 'Lie of the Land' is available from their Publications on  
Tel: 020 7981 2856.

You can receive your Countylink via e-mail

This newsletter is available in other formats

## Welcome

Welcome to the following new clerks:



Mr A Ludlow, Annesley and Felley Parish Council  
Mrs M Onions, Shelton Parish Meeting  
Mrs S Beresford, Bathley Parish Council  
Mrs E M Ibbotson, Acting Chair Flawborough Parish Meeting  
Mrs Chessman, Hodsock Parish Council  
Mr D Landon, Headon cum Upton, Grove and Stokeham Parish Council  
Mrs C Haslam, Eakring Parish Council  
Ms S Jackson, Winthorpe with Langford Parish Council  
Mrs C Cruddas, Scrooby Parish Council  
Mrs A Molloy, Barnby Moor Parish Council

This newsletter is sent to **Town and Parish Councils/Meetings**, for distribution. Names and addresses are held on a database. I want mail to get to the right people without delay so please help by informing me of any changes as it is my responsibility to inform others within the authority who mail out to parish councils. Parish contacts information, the Code of Practice and this newsletter are on the authority's website at

[www.nottinghamshire.gov.uk/parishcouncils.htm](http://www.nottinghamshire.gov.uk/parishcouncils.htm)

Have you an article, information or an event during December 2003-January 2004 in your local parish/ newsletter that you would like to share through the next issue of Countylink then please contact me for details.

Barbara Worrall

## Your County Council contact for:

Changes of Parish Clerk, requests for extra copies of Countylink, Countylink in other formats, articles for Countylink, or if you wish to add information/links/ photograph of your parish to your details on the NCC Website then please contact:

**Barbara Worrall, Regeneration, Learning, Skills and Employment, Culture and Community Department, Nottinghamshire County Council, County Hall, West Bridgford, Nottingham NG2 7QP**

Tel: 0115 977 4085

Fax: 0115 977 3859

E-mail: [barbara.worrall@nottsc.gov.uk](mailto:barbara.worrall@nottsc.gov.uk)

## Your District Council Contacts:

Ashfield District Council, Public Relations  
01623 457004

Bassetlaw District Council, Public Relations  
01909 533726

Broxtowe Borough Council, Public Relations  
0115 917 3743

Gedling Borough Council, Public Relations  
0115 901 3801

Mansfield District Council, Public Relations  
01623 463021

Newark and Sherwood District Council,  
Public Relations 01636 65255

Rushcliffe Borough Council, Public Relations  
0115 914 8555

**Deadline date for articles for the next issue is:  
21 November 2003**