

Nottinghamshire  
County Council

# Countylink

Issue No 68

October 2005



**Ashfield**



**BASSETLAW**  
DISTRICT COUNCIL  
NORTH NOTTINGHAMSHIRE



**GEDLING**  
BOROUGH COUNCIL



Rushcliffe

## Circulation to:

**Councillors** at Town and Parish Councils and Parish meetings; County Councillors; District and Borough Councils, interested individuals and organisations.

## In This Issue:

Action needed to save woodland wildflowers .....	6
Around the County .....	10/11
Best Kept Village Competition .....	12
Community groups celebrate launch of Lumos Burning Desires .....	8
Consultation .....	14
Contacts .....	20
DEFRA and single payment scheme	9
DEFRA - Countryside/Rights of Way	4
DH Lawrence Heritage .....	3
Don't delay apply for ELS .....	12
Equality and Diversity .....	2
Fun in a Box .....	13
Green Flag Awards .....	3
How good is your website? .....	16
Hullabaloo Exhibition Launch .....	8
Implementation date for WEEE .....	16
Improving Playtime .....	13
Join together to take steps against breast cancer .....	17
Lunchtime talks .....	18
Netherfield Forum .....	14
New Advice line for Nottinghamshire consumers .....	17
Nottinghamshire Rural Transport .....	14
Parish websites .....	19
PPS9 to Protect and Enhance .....	7
Rural and Community Shops .....	5
Sherwood Forest Trust .....	5
Take a step back in time .....	4
Tourism Development .....	6
Useful telephone numbers .....	19
Websites and other information .....	19
Welcome .....	19
Wheels to Work .....	15
Working together .....	16

## Summit success!

Positive steps towards the formation of a 'Nottinghamshire Partnership' were made at the Nottinghamshire 'Partnership Summit' held at Kelham Hall, Newark on 5 September 2005. The event was attended by various organisations including Nottinghamshire Association of Local Councils (NALC), district councils, community and voluntary sector partners, Fire and Rescue, health authorities and Police, who showed enthusiasm for working together as a partnership in order to promote the social, economic and environmental well-being of the county. The event provided a great opportunity to ask questions, voice concerns, pick up valuable information and network with partner organisations.

Partners attending the Summit showed their support and commitment to the 'Community Strategy' - a document setting out the priorities and concerns of Nottinghamshire people and describing the kind of place people would like the county to become over the next 4 years. The strategy has been produced through consultation with over 700 organisations across Nottinghamshire including

parish councils, the County Council, general public, voluntary and community organisations, local businesses and public sector organisations that operate locally such as district/borough councils, the Police, health and Fire Service all working together. Throughout the process local communities have made their aspirations, needs and priorities known, to allow the strategy to focus on matters that are really important to Nottinghamshire people such as health, crime reduction, the environment and employment. The strategy will shape the existing and future activity of all these organisations so that they can effectively meet those needs and aspirations.

Agreement to a countywide partnership lays a solid foundation for the implementation of the Local Area Agreements (LAAs), which are due to commence in April 2006.

A Local Area Agreement is a 3 year agreement between central government, local government and key partners which sets out the priorities for a local area and gives public sector organisations the freedom to work together to find local solutions to local problems – with the incentive of gaining extra funding if they succeed.

The agreement will need to show how all the partners will deliver a better quality of life for people through improving performance on both local and national priorities under the following 4 themes:

- **children and young people**
- **safer and stronger communities**
- **healthier communities and older people**
- **economic development and enterprise.**

Each of the 4 themes will be led by an appropriate organisation (for example the Healthier Communities and Older people block may be led by the voluntary sector).

Staff across all organisations will now work towards deciding what will go into the Local Area Agreements. Local Strategic Partnerships, which bring together all sectors of society (public, private, community and voluntary), have also defined the issues that are most important to them and will be feeding these into the Local

Area Agreement under the relevant theme.

Further information on these important initiatives can be found by visiting the following sites:

**Government Office for the East Midlands - [www.goem.gov.uk](http://www.goem.gov.uk), Idea Knowledge - [www.idea-knowledge.gov.uk](http://www.idea-knowledge.gov.uk), Office of the Deputy Prime Minister - [www.odpm.gov.uk](http://www.odpm.gov.uk).**

Significant developments will be taking place over the coming months – so watch this space for more information.

Contact: Lindsay Narey on tel: 0115 977 2386

## Equality and Diversity

Nottinghamshire County Council has recently published "**Challenging Inequality - promoting equality and valuing diversity**".

This useful pack of information contains 3 documents:

**Equality Champions Statement** - written by the Chief Executive and the Leader, this document sets out the vision for equality and diversity in the County.

**Code of Conduct** - for all employees, consultants, Councillors and partners.

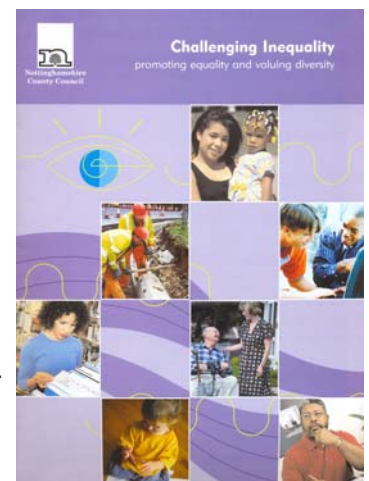
**Equality and Diversity policy** - covering services and employment with examples of good practice going on within the organisation.

The documents are available individually on the internet at:

[www.nottinghamshire.gov.uk/equalitychampsstatement.pdf](http://www.nottinghamshire.gov.uk/equalitychampsstatement.pdf)

[www.nottinghamshire.gov.uk/equalitycodeofconduct.pdf](http://www.nottinghamshire.gov.uk/equalitycodeofconduct.pdf)

[www.nottinghamshire.gov.uk/equalitydiversity.pdf](http://www.nottinghamshire.gov.uk/equalitydiversity.pdf)



or a pack can be supplied by Maggie Else, Nottinghamshire County Council's Corporate Equality Officer on 0115 977 4438. Copies can also be made available in other formats and languages. Maggie welcomes your comments.

## Green Flag Hat Trick for Newark and Sherwood

Newark and Sherwood District Council is celebrating after three of its parks and open green spaces were awarded Green Flag Awards.

Vicar Water Country Park has scooped this award for the sixth successive year while Newark Castle Grounds have been awarded their Green Flag for the fifth year. The newcomer to the awards is Sherwood Avenue Park, Newark.

Vicar Water was once again praised for the way it has been transformed from an area of former colliery spoil tipping into a fully accessible community facility. The judges this year highlighted that Newark Castle Grounds were the venue for a number of outdoor performances in addition to the annual summer band concerts. The Friends Group had also organised a spring photographic competition amongst other things.

Sherwood Avenue Park was praised for its range of facilities, including the newly opened bowls and tennis pavilion and the new skate and BMX facilities.

The Green Flag Award scheme is the national standard for parks and green spaces across England and Wales. The Civic Trust (on behalf of the Office of the Deputy Prime Minister) and the Green Flag Advisory Board manage the award.

Councillor Nora Armstrong, Portfolio Holder for Environment, Health and Amenities said, "For 3 of our parks and open green spaces to be recognised with this award is fantastic news. The high standards of maintenance and involvement by the community are yet again recognised by these Green Flags. The District Council recognises that there is a valuable role to be played by providing these open spaces not only for recreational and social benefits but also for the longer term environmental well being of the area."

For further information please contact: Philip Beard, Parks and Amenities Manager, Newark and Sherwood District Council on tel: 01636 655714

## Other winners in Nottingham and Nottinghamshire include:

- Bulwell Bogs, was originally wetland, a small busy park set in idyllic landscape
- Carr Bank Park, Mansfield, originally a memorial park
- Clifton Playing Field, Nottingham now a vibrant park with areas for wildlife conservation
- Lawn Pleasure Grounds, Sutton in Ashfield
- Lenton Abbey Park, Nottingham, linking to University Park
- Lenton Recreation Ground, Derby Road, Nottingham
- University Park, University of Nottingham, accessed from University Boulevard, Woodside Road, Clifton Boulevard or the A52 Derby Road
- Victoria Park, Nottingham.

For more information on Green Flag Awards visit their website at: [www.greenflagaward.org.uk](http://www.greenflagaward.org.uk)

## DH Lawrence Heritage

The DH Lawrence Heritage Centre at Eastwood, Nottingham has been successful in being accredited as a 'Quality Assured Visitor Attraction' for the second year running. This award was made by the national tourism agency Visit Britain as part of its Visitor Attraction Quality Assurance Service (VAQAS). DH Lawrence Heritage represents the DH Lawrence Birthplace Museum and Durban House Heritage Centre and it was awarded the quality assured status following an annual assessment that covered all facilities and activities.

The DH Lawrence Birthplace Museum was established in 1976 when DH Lawrence's first home was renovated and opened as a museum. Today the Museum is a fascinating re-creation of a Victorian family home reflecting that of the Lawrence family. Nearby Durban House Heritage Centre houses an exhibition that depicts the Victorian past of Lawrence's mining hometown as

well as housing the Rainbow Gallery and Colliers restaurant. Admission is free weekdays with a small admission charge at weekends and bank holidays.

Open daily, the DH Lawrence Heritage Centre forms part of Broxtowe Borough Council's Leisure and Cultural Services and provides numerous opportunities to discover more about local art and heritage.

## DEFRA - Countryside and Rights of Way (CROW) Consultation

Defra has published a consultation paper seeking views on 2 separate provisions which will enable the rights of way network to be managed more sustainably, respecting the needs of the environment, landowners and users.

The consultation paper invites views on the proposed approach to implementing provisions in the Countryside and Rights of Way Act 2000 (CROW Act) which will:

1. Enable a local highway authority, at the request of English Nature, to make an order to divert a public right of way where the public use of the highway is causing, or continued public use is likely to cause, significant damage to a site of special scientific interest (SSSI);



2. Enable a landowner, or more specifically the occupier, to temporarily divert a right of way across their land for up to 14 days in any one year to enable certain dangerous works to take place.

Comments are invited on a number of procedural issues that will need to be resolved before the legislation is commenced. Views are particularly welcome on the sorts of land management works which are likely to cause danger to users of footpaths and bridleways, so that Defra can decide which activities should come within the scope of the legislation.

The consultation will run until 4 November 2005 and is available online at

<http://www.defra.gov.uk/corporate/consult/rightsofway-diversions/index.htm> or by contacting Defra Publications, Admail 6000, London SW1A2XX, tel: 08459 556000

## Take a step back in time

Grants from £3,000 to £25,000 are now available to community groups with the ideas, energy and commitment to bring Nottinghamshire's heritage to life - whatever the era, achievement, place or event.

The Local Heritage Initiative (LHI) is looking to fund projects from art trails to habitat management in a bid to bring communities together to discover and celebrate their local heritage and to allow visitors and future generations to do the same.

Whether groups want to put on a photography exhibition or produce a book, an LHI grant will cover 100% of a wide range of costs including training, materials, equipment and professional fees.



People don't need specific skills or expertise – all that can be provided – they just need to be able to commit their time as part of a group to a heritage project.

The Local Heritage Initiative is not just looking for projects that look at the great, the good and the infamous but it is also looking to uncover Nottinghamshire's hidden history.

Jean Rider of the Local Heritage Initiative at the Countryside Agency said: "Of course we are interested in projects about Lord Byron, the fight at Willoughby Field, Nottingham Caves or the lace industry, but we are also looking for projects that will help people to discover the lesser known figures, landmarks, events and trends that have shaped Nottinghamshire."

Any group can apply – youth groups, history societies, pensioners' clubs and even a group set up specifically to deliver the project.

So far this year, the LHI has committed £196,000 to projects in the East Midlands. It has another £434,000 up for grabs.

LHI has funded 45 projects in Nottinghamshire to date, to the tune of £688,053. This includes this year's Festival of The Beck, which comprised dozens of events celebrating the heritage of villages along a tributary of the Trent river.

A total of £2,312,700 has been spent or committed to 157 projects across the whole of the East Midlands since the scheme began in 1998. The average project spend is £14,730.

Contact Jean Rider at The Countryside Agency on 01949 876250 for an application form or visit [www.lhi.org.uk](http://www.lhi.org.uk) for more information about the programme. LHI distributes funds on behalf of the Heritage Lottery Fund with additional support from Nationwide Building Society. For 2005 the Heritage Lottery Fund has allocated £630,000 for projects in the East Midlands. The focus is on encouraging communities in England to take practical action to care for their local heritage.

## Rural and Community Shops

The County Council has recently joined the Rural Shops Alliance (RSA) and Village Retail Services Association (ViRSA) - organisations that will help to promote and support rural and community shops across Nottinghamshire.

Membership of the Rural Shops Alliance means that all of Nottinghamshire's rural shops will now receive a quarterly newsletter from the RSA and access to the RSA's training programme. In addition specific training sessions can be requested from the RSA if there is demand from rural retailers in the county. The RSA is also a lobbying organisation and regularly has meetings with ministers in central government, pushing the rural angle on issues such as health and safety regulations, licensing laws and sale-of-food regulations. For further information on the County Council and the RSA, contact Ken Aldred on 0115 977 2050.

The Village Retail Services Association (ViRSA) also works to support village shops but is mainly

concerned with the development of shops along the social enterprise model in villages that have been left without any retail outlets or local services. They have a network of field workers across the country who are experts in retail social enterprise and who can help communities to create and maintain their own shops. For more information contact Matt Lockley, External Funding Support, Nottinghamshire County Council on 0115 977 2182.

## Sherwood Forest Trust

*"Ancient Sherwood Forest  
birth place of England's folklore son  
is once again calling for people to stand as one.  
As Robin rallied the Saxon folk against the  
Norman iron fist  
so we now rally local folk to join us in our quest ..."*



The Sherwood Forest Trust, the charity for Sherwood Forest, is celebrating its Tenth Anniversary this year. The Trust has two strings to its bow in the fight against environmental degeneration and cultural erosion. The first is restoration of the traditional landscape whereby fragments of remaining landscape are being pieced together by planting native oak trees and restoring wetlands and rare lowland heath.

The second string concerns Heritage Projects and the Trust is looking for community groups interested in producing a project which celebrates their area of Sherwood Forest. These projects give people a sense of place and are a focal point for a community celebration and as such, fulfil the same functions as the customs of old.

In Blidworth, a youth drama group has produced a play on the Robin Hood legends associated with their village. In Clipstone, the Youth Club is embarking on a video documentary interviewing ex-miners. It will also give them a chance to have their voice heard. The Trust has also supported two Ceramic Storyboard projects which celebrate the mining heritage, with groups with disabilities and groups from disadvantaged areas in Ollerton, Worksop, Bilsthorpe, Edwinstowe,

Retford and Mansfield. Other projects are in the pipeline.

The Trust has been putting itself in the public eye over the summer period with its colourful Heritage Tent. It has appeared at the May Day celebrations at Wellow, the Clumber show, the Robin Hood Festival and at Bestwood Heritage Day. This year it has been a platform to promote the work and opportunities for the public to get involved. Next year it will also be used as a base for colourful heritage entertainment.

The Heritage Tent will next be seen outside the walls of Nottingham Castle at the Robin Hood Pageant (22-23 October) where the Storyteller of



Sherwood Forest, Geezer Bone, will be speaking his mind and juggling ideas and rallying Notts folk to the preservation of this national treasure on our doorstep.

If you would like to start a heritage project or have the tent at your event, then call the Heritage Ranger Ade Andrews on 01623 758231 [www.sherwoodforest.org.uk](http://www.sherwoodforest.org.uk)

## Tourism Development

We all know that Nottinghamshire has many beautiful villages and walks, but are we missing a trick in terms of attracting visitors to the area? A new partnership project led by NCC with Groundwork Greater Nottingham and the Rural Community Council is hoping to attract more visitors to Broxtowe, Gedling and Rushcliffe. The project is part-funded by the Greater Nottingham Partnership and will work with small clusters of villages to develop tourism initiatives - mainly linked to nature trails, rural heritage or food and drink.

Each village cluster will have its own ideas and branding will be developed around them. Environmental improvement works will also be included to make the villages more visitor-friendly. This will include new signage, street

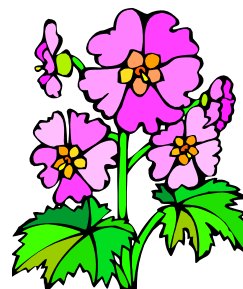
furniture and information boards.

The project, Greater Nottingham Action on Tourism, will run for three years and be delivered alongside the County Council's Building Better Communities initiative. In year one, work will focus on Bingham, the Lambley area and Newstead. More villages have already come forward for years two and three.

For those in the north of the County, a similar project will be running over the next 2 years, supported by European Regional Development Fund. Church Warsop, Warsop and Ollerton have been identified as locations for this initiative.

For further details on either of the two new projects, please contact Heather Stokes on 0115 977 2132 and for information on the Building Better Communities programme contact Neil Hodgson, programme manager on 0115 977 4250

## Action needed to save woodland wildflowers



Action is needed to help reverse the decline of many of Britain's best-loved woodland flowers, including the primrose, the nation's most extensive ecological woodland survey has found.

The study, Long term ecological change in British woodland (1971-2001), found that the number of plant species in 1648 specific plots in 103 native woods across England, Wales and Scotland had declined by more than a third since they were first surveyed in 1971. Characteristic woodland plants like yellow archangel and sanicle fared worst, with 56 out of the 72 species becoming significantly less common.

Fifteen species of tree and shrub also showed a decline in numbers, along with a general fall in tree seedlings, though holly bucked the trend by spreading abundantly in many woods.

The government's Biodiversity and Forestry Minister Jim Knight said the report did not seem

to indicate a single cause for the decline in woodland flowers. Instead, causes include:

- Woods becoming more shady due to ageing trees and inadequate woodland management
- Increasing levels of nutrients in woodland soils due to atmospheric pollution and agricultural fertilisers, possibly accentuated by less acidic soils
- The effects of climate change, with all species responding differently.

The survey shows that soils are recovering from the impact of acid rain, which was such a concern in the 1980s. Results also provided evidence that grazing pressure from deer had increased in lowland woods.

Mr Knight said that a number of government policies and programmes were already addressing the problems behind the decline. "The Government's new policy for ancient woodland in England will help to address the decline by promoting sensitive management of our native and ancient woodlands to prevent problems like overshading," he said. "Measures like creating buffer strips on farmland around woods, or adding to the woodland area could help to reduce the spread of nutrients into the wood from adjacent farmland and increase the habitat available for woodland species. However, while some plants may benefit from opening up woods, it could also enable some weedy species such as nettle and cleavers to become abundant - so careful, balanced management is essential." Other agri-environment schemes and Forestry Commission initiatives, including reducing non-native trees and controlling livestock grazing in woodland, will help to reverse the decline in woodland wildflowers.

Mr Knight said partnerships like the Deer Initiative, a government-funded independent body that helps set up and develop local deer management groups and educates people about managing wild deer populations, were also achieving significant improvements in woodland habitats.

The study was jointly commissioned by Defra, English Nature, the Countryside Council for Wales, Scottish

Natural Heritage, the Forestry Commission, the Woodland Trust and the Joint Nature Conservation Committee and conducted by the Centre for Ecology and Hydrology.

Source: DEFRA

## PPS9 to 'Protect and enhance' Biodiversity

The latest planning policy issued on Tuesday 16 August 2005 by the Government requires planners for the first time to not only protect biodiversity, but where possible to positively enhance it. Planning Policy Statement (PPS) 9: Biodiversity and Geological Conservation promotes ways to conserve and enhance the diversity of England's wildlife and geology through land-use planning.

PPS 9 sets out key principles for how Government expects the planning system to meet its objectives. These include a clear requirement for the planning system to prevent harm to biodiversity and, wherever the right opportunities exist, to incorporate beneficial natural features into the design of development. There are many initiatives throughout England where this approach is already being taken and, with PPS 9, we now have the policy framework to make this part of mainstream planning practice. Throughout England, planners and developers are beginning to recognise that people value nature and, in some developments like at Cambourne in Cambridgeshire, are creating entirely new wildlife habitats within the new communities being built in areas which previously contained comparatively little biodiversity.

Jonathan Price, English Nature's Senior Planning Advisor said: 'Through PPS 9 the Government has put a mark in the sand over what it expects from the planning system. English Nature, and in due course Natural England, looks forward to working with planning authorities to help meet this challenge and make wildlife and geological interest, in both cities and the countryside, a part of everyone's life.'

Source: English Nature

## Hullabaloo Exhibition Launch - a great success

*Hullabaloo*, Next Stage's new exhibition of community art work inspired by barrilete (huge Guatemalan kites), opened on Friday 29 July 2005 at Rufford Country Park to great success.

Hundreds of people braved the dubious weather to celebrate the opening of the exhibition. They were able to take part in arts workshops, such as mosaics, metallic mobiles, sun catchers and drumming, watch a member of Circo Rum Ba Ba ball walking and plate spinning, join in storytelling and dance to the sound of Latin band *Más Y Más*.



The exhibition was opened at lunchtime following a speech by Councillor Barnes, Vice Chairman of Nottinghamshire

County Council and the awarding of certificates to all who had taken part by Councillor Baron, Cabinet Member for Culture. Paul Stocks from Rushcliffe Mencap and Clarissa Taylor from Patchills Day Centre cut the ribbon, releasing helium balloons into the air to open the exhibition to the public.

*Hullabaloo* featured a wide variety of work, made by more than 20 different groups from Nottinghamshire, exploring the colour, shape and form of barrilete. Artists Peter and Alison Massey led the project, visiting day centres, community groups, Sure Start projects and friendship clubs. Participants have explored a variety of art forms, from mosaic and silk painting to textile and photography.

The *Hullabaloo* exhibition was displayed in Rufford's Orangery until Friday 18 September and received thousands of visitors.

*Hullabaloo* was organised by Nottinghamshire County Council's Next Stage, funded by the Adult and Community Learning Service and the

European Regional Development Fund.

For further information please contact Next Stage on 01623 825035 or e-mail: [next.stage@nottscc.gov.uk](mailto:next.stage@nottscc.gov.uk)

### Community groups who made work for the exhibition were:

Asian Ladies, Beeston; Pastures Group, Barncroft Day Centre, Beeston; Kingsbridge Short Breaks, Chilwell; Rushcliffe Mencap, West Bridgford; Leivers Court Day Centre, Arnold; Beck Meadow Day Centre, Arnold; Four Seasons Day Centre/Braywood, Carlton; Full Bloom Centre, Pinxton Highgrove Day Centre, Hucknall; Titchfield Court Sheltered Housing Scheme, Hucknall; Matthew Holland Complex, Selston; Selston Knitters; Kirkby Visually Impaired Group, Kirkby in Ashfield; Ashcroft Day Centre, Sutton in Ashfield; Harworth over 50's; Boundary Resource Centre, Worksop; Greenacre Day Centre, Worksop; Friary House, Newark; Woods Court Day Centre, Newark; White Water, Boughton; Oak Tree Lane Primary School, Mansfield; Maun View, Mansfield; Red Oaks Day Centre, Rainworth; Patchills Day Centre, Mansfield

## Community groups celebrate the launch of *Lumos Burning Desires*

Over 100 community members and arts workers came together to celebrate the launch of the *Lumos Burning*



*Desires* project on Wednesday 3 August 2005. Packed into a former industrial unit in Meden Vale, which has been transformed into an artists' studio, guests were able to watch a projection and presentation about the project. To the sound of a mascletà (daytime fireworks display) and a background of Valencian *Fallas* sculptures, lanterns and fireworks, Next Stage officers introduced the plans for the project and whet appetites for the festival which will take place on Saturday 25 February 2006 at Thoresby Market Site, near Ollerton.

*Lumos Burning Desires* continues the success of the *Lumos Winter Lantern Festival*, previously held at Rufford Country Park, but introduces new, spectacular elements from the Valencian Fire Festival *Fallas*. The audience at the festival will experience live performance, street theatre and a beautiful lantern parade, finishing in a blaze of fire as 6 ninots (figurative sculptures) and a 20-foot centre-piece are burned in a grand finale of fireworks, light and sound.

The launch was attended by the community groups who are creating the 6 ninot: Edwinstowe Arts, Heritage and Festival Organisation; Northfield Family Group from Mansfield Woodhouse; Mansfield Home Education Support Group; Bassetlaw Youth Theatre; Costhorpe Vintage Club; and Manton Culture Club. The 6 Nottinghamshire artists leading the project - Sarah Palmer, Laura Hill, Helen Davies, Jessica Kemp, Julie Bartholomew and Melvyn Rawlinson - were also present to share their Valencian experiences and discuss the training they have received in building ninots.

The designs of the community groups' ninots were unveiled to great excitement. These are all based on the theme of desires and the groups will now work with the artists to build their 5-foot designs. The ninots will be displayed at local Christmas light switch-on events and lantern parades in November and December. In February they will join the 20-foot centre-piece, commissioned by Nottinghamshire County Council and built by professional artists, where they will be set ablaze at the *Lumos: Burning Desires* Festival. Work has already started on the centre-piece and guests were able to see the inner structure and large size of the sculpture, which is being made in three sections.

Tickets for the *Lumos Burning Desires* Festival go on sale to the public on Saturday 22 October from Nottingham Playhouse tel: 0115 941 9419. For ticket prices and further information please visit [www.nottinghamshire.gov.uk/lumos](http://www.nottinghamshire.gov.uk/lumos) or telephone 01623 825035.

*Lumos: Burning Desires* is organised by Nottinghamshire County Council's Next Stage and is

funded by Arts Council England, the European Regional Development Fund and Adult and Community Learning Service.

## DEFRA acts to secure February date for single payment scheme

Defra announced in July that the Rural Payments Agency (RPA) will now prioritise registrations of land onto the Rural Land Register (RLR) to ensure the fastest possible progress towards a February 2006 start date for payments under the new Single Payment Scheme, which will affect 120,000 customers.

The change in prioritisation of RLR registrations will mean that no new cases will be added to the current list of priority cases for land registration, linked to an intended Environmental Stewardship (ES) application, after close of business on Friday 15 July. All land registration cases identified as priorities for ES applications up to this date will continue to be processed as a top priority by the RPA, as of 15th July.

With the first Entry Level Stewardship (ELS) application deadline now approaching, the Rural Development Service (RDS) and Rural Payments Agency have taken a strategic view of priorities for registering land on the Rural Land Register (RLR). Until now, those who needed to register land on the RLR in order to apply for Environmental Stewardship agreements have been given priority over others in the land registration queue by the RPA. Some 7,000 ELS customers with outstanding land registrations have been prioritised in this way.

This approach will support the Government's clearly stated goal of making SPS payments in February. The majority of these will then be paid within a matter of weeks, and 96% by the end of March in accordance with the RPA's 2005-08 Business Plan.

The Rural Development Service also announced it would give customers intending to apply for an early Higher Level Environmental Stewardship (HLES) agreement an additional month to complete and submit an application.

Continued on page 12

'Gateway' schemes which aim to alert drivers that they are entering a 30 mph area have recently been completed in two Ashfield villages by Nottinghamshire County Council. Larger 30 mph warning signs, painted 30 mph road markings and a central island have been added to the eastern entrance into **Jubilee - near Selston** - along Alfreton Road (B600) to encourage motorists to slow down. Alfreton Road has also received more prominent 30 mph signs with village name details and warning messages at the western entrance into Jubilee and at the northern entrance into Underwood to remind motorists that they are no longer travelling along a 40 mph road. Similar signage will shortly be erected at Alfreton Road's southern entrance into **Underwood**. The schemes have cost around £10,000 and have been funded by the County Council's Building Better Communities initiative, which is a wide ranging 5-year programme that will see £25 million invested in making the county a better place to live and work.

**Kinoulton** residents have praised a £15,000 footpath which has improved pedestrian access to one of the village's main social and sporting hubs. Nottinghamshire County Council's Building Better Communities (BBC) initiative has funded the construction of a footpath from Neville Drive to Kinoulton Cricket Club. The footpath was formerly a grass verge which forced pedestrian visitors to walk on the road to access the sporting venue, which also holds social events and business conferences. Street lighting has also been enhanced by the County Council to improve the safety of people using the path at night. David Richards, Chairman of the cricket club, said: "We are delighted with our new footpath as we no longer have to contemplate walking in the middle of the road to avoid the untidy, muddy grass verge. It is safer for both the young and old, and Friday night visitors to the ground have already given the path the 'thumbs up'".

There are currently 2 vacancies on the **Trowell** Parish Council and qualified persons who wish to be considered for co-option are asked to write to the Clerk giving brief details of their suitability. The term of office of the co-opted Councillors will be up to May 2007 when elections will take place at the same time as the elections to Broxtowe Borough Council.

**Trowell** Parish Council held a public meeting to discuss the future of the Parish Hall Playpark and were delighted with the response. A competition is now being held for local youngsters to submit their designs for the redevelopment of the play area. Entries to

Trowell Post Office by 5 November 2005.

As part of the Village Ventures initiative, **Trowell** Parish Council will play host to the Daniel Smith Blues Band at Trowell Parish Hall on Friday 10 February 2006 at 7.30 pm. Tickets are available from the Parish Clerk priced at £3.50 for adults and £2.50 for concessions including light refreshments. Book early as tickets are strictly limited!

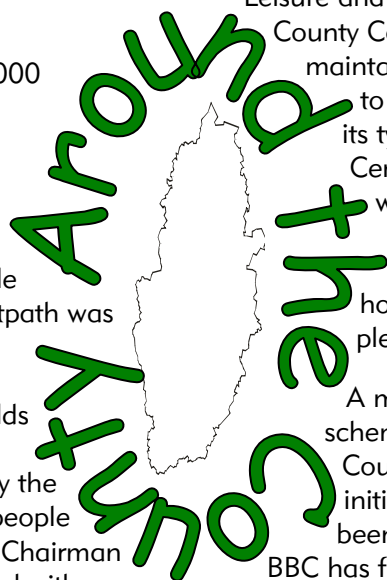
**Kimberley** Leisure Centre has recently opened a prestigious new synthetic turf pitch. The new pitch caters for both full size hockey and football matches and can also be split to provide individual training pitches. The pitch is fully floodlit and is available for booking between 5.00 pm and 10.00 pm weekday evenings and from 9.00 am until 8.00 pm at the weekends. The pitch itself has been built as part of a joint project between Broxtowe Borough Council's

Leisure and Cultural Services and Nottinghamshire County Council. The pitch will be managed and maintained by the Leisure Centre which is keen to establish it as one of the best pitches of its type in Nottinghamshire. The Leisure Centre will also be working in partnership with the local school and clubs to offer a number of adult and junior coaching opportunities in both football and hockey. For more information and booking please call 0115 917 3366.

A major environmental improvement scheme funded by Nottinghamshire County Council's Building Better Communities (BBC) initiative at a cost of around £150,000 has been completed in **Ollerton** town centre. BBC has funded a host of improvements that have been carried out along Forest Road in the town centre since February.

Christmas tree lighting dates for Ashfield:

Location	2005 date
Sutton in Ashfield	Thursday 1 December
Kirkby in Ashfield	Friday 2 December
Selston	Monday 5 December
Underwood	Tuesday 6 December
Annesley	Tuesday 6 December
Hucknall	Wednesday 7 December
Huthwaite	Friday 9 December
Jacksdale	Wednesday 7 December
Stanton Hill	Thursday 15 December



Nottinghamshire Rural Community Council will be holding their 81st Annual General Meeting on 17 October 2005 at Calverton Miners Welfare commencing at 7.30 pm

People living in and around **Ollerton** were encouraged to find out more about a new local bus service at a public road show which took place on Monday 5 September. The Sherwood Sweeper will be a demand responsive bus service which will allow residents from Ollerton and surrounding villages to be picked up from their nearest bus stop and taken anywhere into the town centre by making a telephone reservation at least two hours before their journey.

Nottinghamshire went batty at the August Bank Holiday weekend with a host of events organised by members of the Notts Biodiversity Action Group (BAG) to mark European Bat Weekend. Local residents met representatives of the North Notts Bat Group to find out more about their bat rescue work at Langold Country Park.

The first stage of works to transform a wasteland area next to **Sutton** landfill site into a green space haven for local people has got underway thanks to funding from Nottinghamshire County Council's Building Better Communities (BBC) initiative.

Local people wanting to have their say on how the newly formed Friends of **Southwell** Trail influences the running of the local nature reserve had their first meeting in August. The trail has recently gained Local Nature Reserve status, which will give it added protection against development and means Nottinghamshire County Council is committed to its management. The trail was once a railway line that ran from Mansfield to Southwell and is used for many different recreational activities like horse riding, cycling and walking. At the meeting a steering group was set up to write a constitution with a view to meeting again in November. Contact Mark Guy on 0115 977 2143 or e-mail [mark.guy@nottsc.gov.uk](mailto:mark.guy@nottsc.gov.uk)

Get Streetwise - Rid **Rushcliffe** of litter, graffiti, fly-tipping, abandoned cars, dog mess and anti-social behaviour. Tell us about problems in your area: [www.rushcliffe.gov.uk/reportaproblem](http://www.rushcliffe.gov.uk/reportaproblem) Sign up to our Streetwise Pledge: [www.rushcliffe.gov.uk/streetwisepledge](http://www.rushcliffe.gov.uk/streetwisepledge) Love your Borough - we do!

**Ashfield** funfair, bonfire and bumper fireworks annual

event 'To celebrate the 400th anniversary of the Gun Powder Plot' will be held on Friday 4 November 2005 at Sutton Lawn Ground starting at 7.00 pm.

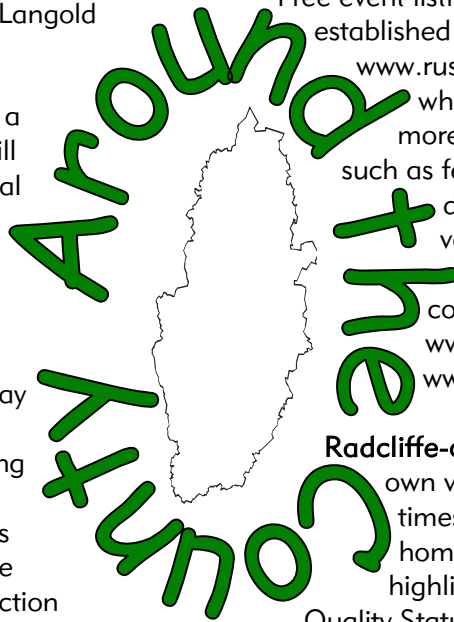
Parish councillors at **Gunthorpe** are looking into the question of whether or not they should support the idea of producing a Village Plan.

Local groups can now advertise their job vacancies and events on Rushcliffe Borough Council's website for free. The council advertises its own job vacancies on the website at [www.rushcliffe.gov.uk/jobs](http://www.rushcliffe.gov.uk/jobs), and now community groups (including clubs, societies and parish councils) are invited to send in their own job vacancies for inclusion on the very popular jobs listings page. The job adverts will also be sent out in the council's free email alerts service, which allows people to sign up to receive details of job vacancies, news stories and other updates on council services by email.

Free event listings are available in the council's well-established online event calendar at [www.rushcliffe.gov.uk/events](http://www.rushcliffe.gov.uk/events). The calendar, which the council has been running for more than 5 years, typically features events such as festivals, markets, open days, dance, drama, music, films and walks. Job vacancies and event listings can be added to the council's website by completing simple online forms at: [www.rushcliffe.gov.uk/yourjobs](http://www.rushcliffe.gov.uk/yourjobs) [www.rushcliffe.gov.uk/yourevents](http://www.rushcliffe.gov.uk/yourevents).

**Radcliffe-on-Trent** Parish Council is producing its own village newsletter. It will be published 4 times a year and delivered free to all 3,500 homes in the parish. The first issue highlighted the fact the council are going for Quality Status and hope to be in a position to make their claim early next year. It also reported on the success of the council's new Grange Hall community facility, which is now up and running and being used for a wide variety of events, including wedding receptions, dances, educational classes, meetings and drama productions. The council themselves are investigating the possibility of staging a series of film evenings there, and hope to have the first up and running in January.

**Parish councils** in the Newark and Sherwood District Council area are being urged to make their comments on planning applications 'on line' - to speed up the process. At a conference staged by the District Council, Lee Robinson explained that the planning website had developed over the last few years and the e-planning website was currently being tested. This system will run parallel with the current system.



Responding to customer concerns over the time remaining to complete a Farm Environment Plan (FEP), a key requirement of the scheme, and in recognition of the delays experienced in printing some application packs for applicants, the RDS has moved the application deadline for those seeking a 1 February 2006 start date to 30 October 2005. The RDS has also set up a project to review the FEP with a broad objective to make it easier for customers to use; the RDS will be seeking views from customers and their agents as part of the review.

Environmental Stewardship is open to applications at any time, so all applicants will have the opportunity to secure an agreement when their land registration is complete. No one will be excluded from making an application when their land is registered on the RLR.

Source: DEFRA

### Don't delay applying for ELS land not yet on the rural register

It is a requirement of the Entry Level Stewardship scheme discussed above that all the land is registered on the Rural Land Register (RLR).

The Rural Development Service (RDS) reminded farmers today that they can still submit Entry Level Stewardship (ELS) applications for the majority of their farms; they don't have to wait until outstanding issues with the (RLR) on individual land parcels are resolved.

The RDS is encouraging farmers to submit applications now for the land that appears on their maps within the ELS application pack. In doing so, that land becomes eligible for ELS payments as soon as the application is processed and an Agreement commences. Any additional land parcels subject to RLR resolution could be added at a later date.

There are two options for doing that:

- A separate application can be lodged just for the additional area of land. However, that would need to meet the points threshold in its

own right so is unlikely to be appropriate for small areas of land. If the application were successful there would be two separate agreements on the same holding. That option is available now.

- It will be possible after the first payment round (1 February 2006 for Agreements that started on 1 August) for agreement holders to apply to restart their ELS agreement. By restarting their ELS agreement, applicants will need to complete new application forms and maps. The new ELS agreement will contain both the original and newly registered land.
- Agreement holders will receive a pro-rata payment for the amount of land under the original ELS agreement and the first payment for the re-started agreement will be scheduled to be made six months later.

Applicants should contact their local RDS office where staff will be pleased to provide any further clarification on the options available. The final decision on the best course of action will need to be made by applicants in light of their individual circumstances.

### Best Kept Village Competition 2005

Judges were again extremely impressed by the high level of community involvement and commitment they saw in their visits to the 18 Nottinghamshire villages in this year's final. This year 44 entries were received.

#### Category A (pop 2000+)

Winner	<b>Edwinstowe</b>
Runner up	<b>Burton Joyce</b>
Certificate of Merit	<b>Bilsthorpe</b>

#### Category B (pop 700-2000)

Winner	<b>Woodborough</b>
Runner up	<b>Sutton Bonington</b>
Certificate of Merit	<b>Everton Farndon</b>

#### Category C (pop 300-700)

Winner	<b>Gringley on the Hill</b>
Runner up	<b>Halam Oxton</b>

Category D (pop under 300)  
 Winner **Ranby**  
 Runner up **Laneham & Church Laneham**

Best New Entrant: **Gringley on the Hill**

Category winners will be presented with cheques for £125 at NALC's AGM on 16 November. Runners up will each receive cheques for £50 and the Best New Entrant a cheque for £100. Framed certificates will be presented to all winners and villages awarded Certificates of Merit. The **Wilkinson 'Best of Notts' Award** will be announced at the end of the evening as well as receiving a cheque for £1,000. **Jacksdale** will receive a special prize of £250 as the village nominated to represent Nottinghamshire in the national 2005 'Village of the Year' competition.

## Fun in a Box



Nottinghamshire Biodiversity Action Group and Sherwood Forest Community Rangers launched an innovative outdoor education resource, 'Fun in a Box' this week.

Fun in a Box is a suite of self-contained resource boxes containing a variety of exciting outdoor activities. The organiser of the scheme, Amy Chandler of Sherwood Forest Community Rangers said: "Fun in a Box is a one-stop-shop for youth and school groups wanting to get outside and have fun whilst learning about the natural world around them."



The boxes contain everything needed to get started - all the equipment, instructions and even guidance on risk assessment and health and safety. Titles include Minibeast Safari, Nature Detectives, Orienteering and Outdoor Maths and Mapping.

The boxes are free to hire out from Sherwood Pines Forest Park with a registration fee of £5.00 to allow for replacement of used equipment and a £30 returnable deposit to cover loss or damage. They are available to groups in the Bassetlaw, Newark and Sherwood, Mansfield and Ashfield areas.

Fun in a Box is part of a wider project called **Community Action for Wildlife, funded by the Alliance Sub-regional Strategic Partnership** and Nottinghamshire County Council. The Project Manager, Lianne Evans of Notts Biodiversity Action Group said: "The great thing about this resource is that the activities are so easy to use, and it's great to see kids enjoying learning about wildlife."

For more information on Fun in a Box contact Amy Chandler: 01623 821448

## Improving Playtime

£30,000 has been allocated by Broxtowe Borough Council to improve and upgrade three local Parks in Beeston and Toton. The improvement works programme will ensure that the sites are enhanced in terms of visual quality, safety and security.

Nearly two thirds of the land in Broxtowe Borough is open countryside. The Borough Council manages 20 parks and recreation grounds, 23 open spaces and 4 wildlife sites. There are many facilities and activities available at all of these sites and a continuous programme of improvements ensures they remain at a high standard for public enjoyment.

Improvements at Dovecote Lane, Recreation Ground, Beeston include:

- Resurfacing of footpath within ornamental garden
- New high quality metal fence on the perimeter

Improvements at Leyton Crescent Recreation Ground, Beeston include:

- Refurbishment of fence surrounding multi sports area and play area
- New fencing to prevent access by motorcyclists

Improvements at Manor Farm Recreation Ground, Toton include:

- Installation of street lighting columns to allow mobile CCTV cameras to be more effective in addressing anti social behaviour in the park.

The improvements will ensure the parks are more open and accessible to discourage anti-social behaviour on the sites.

For more information on parks and open spaces in Broxtowe Borough please contact 0115 917 3507 or visit the website at:

[http://www.broxtowe.gov.uk/enviro\\_n\\_parks\\_main.htm](http://www.broxtowe.gov.uk/enviro_n_parks_main.htm)

## Nottinghamshire Rural Transport Partnership – Funding Opportunity



The Nottinghamshire Rural Transport Partnership is a scheme of assistance which aims to address social exclusion in rural areas by developing and supporting rural transport projects in Nottinghamshire. The Nottinghamshire RTP was established in February 1999 and so far has helped a wide range of communities and groups throughout the county.

The Delegated Fund, also known as the Small Scale Local Transport Improvement Fund, is administered by Mark Lynam on behalf of the Nottinghamshire Rural Transport Partnership (RTP). Funding has been obtained from The Countryside Agency for continuation of the fund through to 31 March 2006. The aim of the fund is to award grants to individual organisations, operators or providers relating to transport.

### How can it benefit you?

Grants could be for publicity leaflets, timetable cases and safety equipment and can be used as revenue funding towards services. In addition, with the closure of The Countryside Agency's Vital Villages programme, applications will also be accepted on a small scale for the completion, or part funding, of Transport Needs Surveys. The fund cannot be used for Highway improvements, road safety or bus shelters.

### Criteria:

Bids are to be based on clearly identified need. The maximum grant which is available from the fund is £1,000. Funding to be for one year only. Successful applicants will get 100% funding.

For an application form or further information, please contact Mark Lynam at Nottinghamshire Rural Community Council on 01623 727619 or email [mlynam@nottscc.org.uk](mailto:mlynam@nottscc.org.uk).

## Consultation

The Rural Social and Community Programme is designed to develop the capacity of the rural voluntary and community and parish council sectors to address important rural social issues and tackle the causes of rural social exclusion. Before the programme gets underway, Defra is consulting key stakeholders on how the programme's objectives can best be delivered in rural communities. The closing date for responses is 13 October 2005.

More information can be found at: <http://www.defra.gov.uk/corporate/consult/rsc-programme/index.htm>

## Netherfield Forum

St George's Centre is owned and managed by Netherfield Forum and opened its doors in September of last year. It is a purpose built community access centre in the heart of Netherfield and is host to a wide range of activities, including training courses; IT classes; advice surgeries; fitness sessions and much more besides!

Within the centre is Shunter's Café, which offers a variety of freshly prepared meals and snacks, all served in a friendly and relaxing environment.

St George's also has rooms available to hire at very competitive rates and is suitable for a range of both formal and informal events, including seminars; business meetings; training sessions; conferences; birthday parties and wedding receptions.

We can provide a variety of buffets and

refreshments to be served during your meeting, and can also offer a choice of equipment, including ohps, flipcharts, projectors and televisions with either vcr or dvd recorders.

For further information or to make a booking please telephone St George's Centre, 91 Victoria Road, Netherfield, Nottingham NG4 2NN on 0115 911 3302, where we will be glad to help.

## Wheels to Work

The Nottinghamshire Wheels to Work Scheme continues to go from strength to strength, and has now helped more than 115 Notts residents to access employment, training or education places that they may otherwise not have been able to attend!

Wheels to Work is managed by Nottinghamshire Rural Community Council, and it is a moped leasing scheme aimed at helping young people aged 16–24, or people aged 25+ who have been unemployed for 6 months or more, to overcome the initial problem of transport to get to work or training, where there is no suitable alternative transport. Typically this is because these people are living or working (or both) in rural parts of the county, and maybe working shifts that fall outside the hours of operation of public transport. mopeds offer a flexible, low-cost transport solution that enables people to overcome this initial problem, and therefore provides access to jobs and training.

Clients are provided with a moped for a maximum period of twelve months, a period of time during which they are expected to save up to provide a transport solution of their own at the end of the scheme - a target which almost all clients achieve. The moped comes fully insured, serviced and taxed by the project, and clients also receive a one day CBT (Compulsory Basic Training) course, to ensure that they have demonstrated that they have a satisfactory level of safety awareness. Clients are also kitted out with helmet, reflective jackets and other safety equipment.

Clients contribute a nominal weekly sum towards the upkeep of the bike, and are visited regularly by the Project Officer to ensure that all is going well with their bikes and job or training.

The fleet currently stands at 41 mopeds - with a further five due for delivery any day now. Demand for Wheels to Work is at a peak at this time of year, but these new bikes will help to satisfy some of this demand – and as clients return bikes after a year when they have saved for their own transport, bikes are reallocated in a short space of time and after a safety check.

Clients come from all across Nottinghamshire – from Gringley-on-the Hill in the north, and down to Willoughby-on-the-Wolds in the south of the county. The range of occupations is also varied – we have waiters, building students, prison wardens, electrician apprentices and a landscape gardener.

Feedback from clients at the end of their time on the scheme is invariably positive – here are a few recent examples taken from the exit questionnaires:

“Fantastic Scheme, helped to get me mobile and save for my own car.”

“Thank you for the help with the bike, without it I may not have become a chef.”

The Wheels to Work Project Officer would welcome enquiries from groups and organisations who would like to receive publicity material, or maybe a visit to talk about the scheme. Enquiries and applications are also welcome from individuals.

Birmingham is host to the National Wheels to Work Conference on 12 October.

For further information, please contact:  
Liam Russell, Telephone: 01623 727620  
Email: [lrussell@nottsrcc.org.uk](mailto:lrussell@nottsrcc.org.uk) Or visit our website: [www.nottswheels2work.org.uk](http://www.nottswheels2work.org.uk)

## How good is your website?

Is it accessible?

Here are some things to think about when developing or improving an existing website:

- use an easy to read font - Nottinghamshire County Council use Verdana
- the font size should be minimum of 14 pt
- the font style which avoids block capitals and italics as these cannot be read by screen reader assistive technology
- background colour contrasts/text
- plain English
- Alt text is shown when moving the mouse over images
- can scrolling text be stopped by a click of the mouse?
- navigation aids and headings are in the same place with the same style
- appropriate logo with links to documents Word or pdf + file size and appropriate plug-in.

Adding links to other websites provides more information but avoid sending your users to inappropriate sites or sites of poor quality as this can affect accreditation. Your website should be open 24 hours a day. Market your website by registering with search engines. Have your website address on stationery, news releases and publications.

The RNIB website has more information on their website on accessibility at [www.rnib.org.uk](http://www.rnib.org.uk) in their section See It Right pack.

## Working together to make a difference

### School governor volunteers needed in Nottinghamshire – you can make a difference to children's futures

School governors are the largest and most important voluntary group in education. As a critical friend to a school, governors can make a valuable contribution to its smooth running and prosperity. They can greatly help to improve the quality of education for many children and thus

give them the chance of a better future.

As schools become more autonomous, people with a wide variety of skills and life experiences can make a real difference in their community by applying these skills in the strategic leadership of a school as part of its governing body. Applying one's skills and experiences to a different environment can help a person to develop these skills further, thus ultimately helping their own career development.

You don't have to have children to become a school governor; you just need to be over 18, be enthusiastic and committed and willing to give some of your time.

2005 is also the *Year of the Volunteer* so it is an ideal time to get involved and make a difference in Nottinghamshire schools which need your help!

For more information, please contact: Donna Johnson on 01623 433357, Glenys Doughty on 0115 854 6061 or Jane Mansell on 0115 854 6054

## Implementation date announced for WEEE

Collection and recycling of Waste Electronic and Electrical Equipment (WEEE) will be the responsibility of manufacturers and retailers of the equipment from June 2006 following a Government announcement in August.

The Government has postponed the implementation date for the WEEE Directive until June 2006 in the light of the preparations needed for this legislation, which breaks new ground for many of those involved, and continuing concerns expressed by the business community and other stakeholders. Department of Trade and Industry Minister, Malcolm Wicks said: "This Directive is about dealing effectively with electrical waste which can be damaging to the environment. It is challenging and has required a lot of planning and preparation but our priority is to get this right."

Jeff Cooper, the Environment Agency's Manager for Waste Producer Responsibility, said "The

Environment Agency will work closely with Government Departments and the devolved administrations to implement the forthcoming WEEE Regulations. We expect to be able to announce arrangements for the registration of producers in the early autumn with registration starting in January 2006."

Source: Department of Trade and Industry

## Join together and take steps against breast cancer

Cancer Research UK is calling on women, men and children across Nottinghamshire to 'All Walk Together' at Wollaton Park, Nottingham on Sunday 23 October 2005 to help raise money for breast cancer research.



To mark Breast Cancer Awareness Month in October and as part of its 'All Join Together' campaign Cancer Research UK is organising a series of sponsored walks across the UK. The All Walk Together - Wollaton Stride is a 3 or 6 mile sponsored walk which is open to everyone - no matter what age, gender or level of fitness and will take place around the beautiful 500-acre grounds of Wollaton Hall and Park.

Rebecca Patterson, Events Fundraiser at Cancer Research UK said: 'Last year over 450 people took part raising over £20,000 for breast cancer research and this year we hope to get even more people involved to make this event one of the biggest Strides in the country.' Every year nearly 12,800 women in the UK die of breast cancer, and it is now the most commonly diagnosed cancer in the UK. The good news is that - thanks to earlier detection and improved treatment - breast cancer death rates in the UK have fallen by a fifth in the last 10 years. To ensure that the death rate from breast cancer continues to fall more money needs to be raised to fund the research undertaken by Cancer Research UK.

If you are interested in joining together for breast cancer research please contact Cancer Research UK on 08701 60 20 40 for further information and a pack. Alternatively visit our website and

register at [www.cancerresearchuk.org/breastcancer](http://www.cancerresearchuk.org/breastcancer)

## New Advice Line for Nottinghamshire Consumers

The launch of a new telephone helpline means that clear, practical and free consumer advice is only a phone call away. Anyone in Nottinghamshire in need of advice and information on a range of consumer issues will now be able to call Consumer Direct East Midlands for help.

Whether it's a £20 pair of shoes that a heel has fallen off, a £1,000 sofa ripping after only a few weeks, or a garage repair bill that seems too expensive, Consumer Direct can help. The service aims to give consumers the knowledge, tools and confidence to resolve consumer problems themselves.

To help people get advice when they need it, the service is available 6 days a week and advisors are on hand from 8.00 am to 6.30 pm Monday to Friday, and 9 am to 1 pm on Saturdays on 08454 040506.

Callers will be connected to highly trained advisors, able to deal with all manner of enquiries, at a contact centre in Lincoln. The service is also available on-line at [www.consumerdirect.gov.uk](http://www.consumerdirect.gov.uk).

From overcharging to faulty goods, from dodgy workmanship to reporting dishonest traders and scams, the Advisors are ready to offer solutions for individual problems and advise consumers of their rights. Working in partnership with local authority Trading Standards services, Citizens Advice, and other Consumer Support Network members, the service is funded by the Department of Trade and Industry. Consumer Direct is about helping people to help themselves by informing them of the possible pitfalls they face in buying goods and services and, importantly, making sure they know their rights.

Anyone in need of consumer advice can contact Consumer Direct on 08454 040506.

## Lunchtime talks 2005

This autumn Nottinghamshire Archives is holding a series of four lunchtime talks at Castle Meadow Road. Each talk lasts from 1.00–1.45 pm and is followed by coffee and biscuits. There is a charge of £2.50 including coffee. **Advance booking and payment is essential.** Please return the tear-off slip below.

---

### PRAYERS, PORK PIES AND PHRENOLOGY: THE DIARY OF ELIZABETH NUTT HARWOOD OF BEESTON

**Speaker:** Margaret Cooper, writer and local historian

**Date:** 19 October

Elizabeth Nutt Harwood lived, until she married, at the Boat and Horses Inn, Beeston Rylands. Though Elizabeth only kept a diary for 5 years, 1838-42, it provides a fascinating insight into her life and times. It records activities on the local canal, chapel life, the arrival of steam trains to Beeston and her attendance at lectures held in the National School. Margaret Cooper has transcribed Elizabeth's diary, which has recently been published by Nottinghamshire County Council and is on sale at Nottinghamshire Archives, price £5.95

---

### DISCOVERING NOTTINGHAM HOSPITAL RECORDS, 1900–2000

**Speaker:** William Bell, Nottinghamshire Archives

**Date:** 2 November

Archivist Will Bell provides a unique insight into the wealth of Nottingham hospital records now held at the Archives. These records include everything from architectural plans to patient registers. He reveals how the records might be used to trace trends in health care, attitudes to sickness, trends in hospital organisation and how 'patient ancestors' might be traced in the last century.

---

### BRINGING FAMILY HISTORY TO LIFE

**Speaker:** Brian Drescher, director of English Roots - family history research

[www.english-roots.com](http://www.english-roots.com)

**Date:** 16 November

Brian Drescher has been researching his Drescher family for several years. The family came to England from the Black Forest, in Germany, and were watch and clock makers. They settled originally in Hull, then moved to various parts of the country. Brian unravels this fascinating story and highlights the range of resources he has used at Nottinghamshire Archives and other record offices. His research was the centrepiece of a family reunion in September.

**This talk celebrates this year's Archive Awareness Campaign which has the theme of 'Beginnings'**

---

### DISCOVERING LOST COUNTRY HOUSES OF NOTTINGHAMSHIRE

**Speaker:** Philip E. Jones, family and local history researcher

**Date:** 30 November

Since the 18<sup>th</sup> century well over 100 important houses have been 'lost' in Nottinghamshire. Many disappeared in the 1960s. Philip Jones explores this vanished world and examines a variety of information sources that can be used to trace their location and reveal their individual stories.

---

.....  
Please make cheques payable to 'Nottinghamshire County Council' and send with this request slip to:  
**Nottinghamshire Archives, Castle Meadow Road, Nottingham NG2 1AG**      **Tel: 0115 958 1634**

Name:.....

Address:.....

.....Telephone Number:.....

*Please tick:*

Prayers, Pork Pies and Phrenology       Discovering Nottingham Hospital Records   
Bringing Family History to Life       Discovering Lost Country Houses of Nottinghamshire

## Welcome



### Welcome to the following new clerks:

Mrs J Stone, Calverton Parish Council  
Mr M Elliott, Hickling Parish Council  
Mrs S Marlow, Tuxford Parish Council

### Parish websites:

**Aslockton:** [www.aslockton.org](http://www.aslockton.org)  
**Barton in Fabis:** [www.barton-in-fabis.co.uk](http://www.barton-in-fabis.co.uk)  
**Bingham:** [www.bingham-tc.gov.uk](http://www.bingham-tc.gov.uk)  
**Calverton:** [www.calvertonpc.fsnet.co.uk](http://www.calvertonpc.fsnet.co.uk)  
**Cotgrave:** [www.cotgrave-tc.gov.uk](http://www.cotgrave-tc.gov.uk)  
**East Bridgford:** [www.eastbridgford.com](http://www.eastbridgford.com)  
**East Leake:** [www.east-leake.gov.uk](http://www.east-leake.gov.uk)  
**Eastwood:** [www.eastwood-town-council.org.uk](http://www.eastwood-town-council.org.uk)  
**Everton:** [www.evertonvillage.org.uk](http://www.evertonvillage.org.uk)  
**Gringley on the Hill:** [www.gringleyvillage.org.uk](http://www.gringleyvillage.org.uk)  
**Harby:** [www.harby.org.uk](http://www.harby.org.uk)  
**Holme Pierrpont and Gamston:**  
[www.holmepierrepointandgamstonpc.org.uk](http://www.holmepierrepointandgamstonpc.org.uk)  
**Keyworth:** [www.keyworthparishcouncil.org.uk](http://www.keyworthparishcouncil.org.uk)  
**Kimberley:** [www.kimberley-online.org.uk/4724.html](http://www.kimberley-online.org.uk/4724.html)  
**Laneham:** [www.laneham.org.uk](http://www.laneham.org.uk)  
**Linby:** [www.linby.org](http://www.linby.org)  
**Misterton:** [www.mistertonvillage.org.uk](http://www.mistertonvillage.org.uk)  
**Newark:** [www.newark.gov.uk](http://www.newark.gov.uk)  
**Nuthall:** [www.nuthallparishcouncil.co.uk](http://www.nuthallparishcouncil.co.uk)  
**Oxton:** [www.oxtonpc.fsnet.co.uk](http://www.oxtonpc.fsnet.co.uk)  
**Papplewick:** [www.papplewick.org](http://www.papplewick.org)  
**Ravenshead:** [www.ravensheadparishcouncil.org.uk](http://www.ravensheadparishcouncil.org.uk)  
**South Leverton:** [geocities.com/slevnotts\\_webmast](http://geocities.com/slevnotts_webmast)  
**Stapleford:** <http://www.stapleford-notts.co.uk/town%20council.htm>  
**Tollerton:** [www.tollerton.org](http://www.tollerton.org)  
**Trowell:** [www.trowell.org.uk](http://www.trowell.org.uk)  
**Warsop:** [www.warsop.web.co.uk](http://www.warsop.web.co.uk)  
**Woodborough:** [www.woodboroughpc.fsnet.co.uk](http://www.woodboroughpc.fsnet.co.uk)

### City and County websites:

[www.nottinghamcity.gov.uk](http://www.nottinghamcity.gov.uk)  
[www.nottinghamshire.gov.uk](http://www.nottinghamshire.gov.uk)

## City and County Telephone Numbers:

City: 0115 915 5555  
County: 0115 982 3823

### District Council websites:

[www.ashfield-dc.gov.uk](http://www.ashfield-dc.gov.uk)  
[www.bassetlaw.gov.uk](http://www.bassetlaw.gov.uk)  
[www.broxtowe.gov.uk](http://www.broxtowe.gov.uk)  
[www.gedling.gov.uk](http://www.gedling.gov.uk)  
[www.mansfield.gov.uk](http://www.mansfield.gov.uk)  
[www.newark-sherwooddc.gov.uk](http://www.newark-sherwooddc.gov.uk)  
[www.rushcliffe.gov.uk](http://www.rushcliffe.gov.uk)

### Other useful websites:

[www.countrysideagency.gov.uk](http://www.countrysideagency.gov.uk)  
[www.defra.gov.uk](http://www.defra.gov.uk)  
[www.emda.org.uk](http://www.emda.org.uk)  
[www.environment-agency.gov.uk](http://www.environment-agency.gov.uk)  
**Government News:** [www.number10.gov.uk](http://www.number10.gov.uk)  
**Office of the Deputy Prime Minister:**  
[www.odpm.gov.uk](http://www.odpm.gov.uk)  
**National Association of Local Councils:**  
[www.nalc.gov.uk/](http://www.nalc.gov.uk/)  
**Direct Gov:** [www.direct.gov.uk/](http://www.direct.gov.uk/)

### Useful Telephone Numbers:

**County Council Waste hotline:** 0115 977 1019  
**Crimestoppers:** 0800 555 111  
**Domestic Violence:** 0808 800 0340  
**Floodline:** 0845 988 1188  
**Report Racial Abuse:** 0800 085 8511  
**Victim Support:** 0115 852 3506

**Nottinghamshire Association of Local Councils:**  
01636 816890  
**Nottinghamshire Rural Community Council:**  
01623 727600

### District Council Telephone Numbers:

Ashfield: 01623 450000  
Bassetlaw: 01909 533533  
Broxtowe: 0115 917 7777  
Mansfield: 01623 463463  
Gedling: 0115 901 3901  
Newark and Sherwood: 01636 650000  
Rushcliffe: 0115 981 9911

## Your Newsletter

This newsletter is sent to **Town and Parish Councils/Meetings**, for distribution. Names and addresses are held on a database. I want mail to get to the right people without delay so please help by informing me of any changes as it is my responsibility to inform others within the authority who mail out to parish councils. Parish contacts information, the Code of Practice and this newsletter are on the authority's website at [www.nottinghamshire.gov.uk/parishcouncils.htm](http://www.nottinghamshire.gov.uk/parishcouncils.htm)

Please contact me if you have:

- Changes of Parish Clerks details
- Articles for Countylink
- information or an event during **December 2005 and January 2006** in your parish
- requests for extra copies of Countylink
- information/links/photograph you would like to add to your details on the Nottinghamshire County Council's website.

Barbara Worrall

## Your District Council Contacts:

Ashfield District Council, Public Relations  
01623 457004

Bassetlaw District Council, Public Relations  
01909 533726

Broxtowe Borough Council, Public Relations  
0115 917 3743

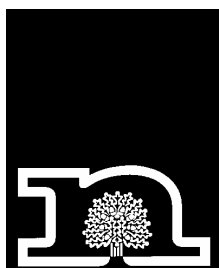
Gedling Borough Council, Public Relations  
0115 901 3801

Mansfield District Council, Public Relations  
01623 463021

Newark and Sherwood District Council  
Public Relations 01636 655255

Rushcliffe Borough Council, Public Relations  
0115 914 8555

## Contacting us:



E-mail: [barbara.worrall@nottsc.gov.uk](mailto:barbara.worrall@nottsc.gov.uk)

Phone: 0115 977 4085

Fax: 0115 977 3859

Post: Regeneration Division, Culture and Community Department,  
Nottinghamshire County Council, County Hall, West  
Bridgford, Nottingham NG2 7QP

Internet: [www.nottinghamshire.gov.uk/parishcouncils.htm](http://www.nottinghamshire.gov.uk/parishcouncils.htm)

This information is available in other formats

**Deadline date for articles for the next issue is:  
23 November 2005**