

Nottinghamshire

# Countylink

Issue No 62

June 2004



**BASSETLAW**  
DISTRICT COUNCIL  
NORTH NOTTINGHAMSHIRE



**GEDLING**  
BOROUGH COUNCIL



MANSFIELD DISTRICT COUNCIL



**NEWARK & SHERWOOD**  
DISTRICT COUNCIL



Rushcliffe

## Circulation to:

**Councillors** at Town and Parish Councils and Parish meetings; County Councillors; District and Borough Councils, interested individuals and organisations.

## In This Issue:

A Thousand Years of Farming .....	4
Are you an Active Hero .....	2
Around The County .....	15
Arts Network .....	5
Come Dancing .....	14
Contacts .....	16
County Substance Use Policy .....	11
Cropwell Celebration with VIP .....	3
D H Lawrence Festival .....	7
East Leake Parish Plan .....	6
First Soil Action Plan .....	10
Fly Tipping .....	14
Free Community Food Training .....	4
Greasley Parish Council .....	2
Gypsy and Travellers Day .....	3
Hockerton Housing Project .....	13
MASH Hosts .....	9
Music in Quiet Places .....	5
NALC Grant .....	9
North East Bassetlaw Forum .....	7
Notts Century .....	12
NRCC Group .....	12
Notts RCC AGM .....	14
Playscheme .....	13
Robin's Return .....	5
Stop Promoting Alien Plants .....	12
Sure Start Centre, Blidworth .....	6
Syerston Flower Festival .....	3
Tackling Anti-Social Behaviour .....	9
Village Connections .....	11
Useful information/websites .....	14
Walk and Talk Programme .....	14
War Memorials .....	14
Welcome .....	14
What's on in Rushcliffe .....	8
Willoughby on the Wolds News .....	6
Woodland Trail .....	7
Young Witness Service .....	10

## Vehicular Access Over Common and Other Land - Defra

**O**n 18 May 2004, DEFRA published informal guidance on the implications of the recent House of Lords judgement in the case of Brandwood and Others v Bakewell Management Limited.

The judgement affects homeowners claiming a right of vehicular access over common and other land. Previously, they had the option of seeking a statutory easement under Section 68 of the Countryside and Rights of Way Act, since prescriptive rights were not considered to exist.

The House of Lords' judgement overturns judgement in the 1993 case of Hanning v Top Deck Travel, and means that many more people will now be able to claim a prescriptive right of vehicular access even though driving over common and other land is a criminal offence when it is undertaken without lawful authority.

The full judgement is available at: [www.publications.parliament.uk/pa/ld200304/ldjudgmt/jd040401/bake-1.htm](http://www.publications.parliament.uk/pa/ld200304/ldjudgmt/jd040401/bake-1.htm) and the letter Defra has sent to all parties on its consultation list, giving further details, is available at [www.defra.gov.uk/wildlife-countryside/issues/common/developments.htm](http://www.defra.gov.uk/wildlife-countryside/issues/common/developments.htm) or from the Common Land Branch, Defra, Zone 1/05 Temple Quay House, 2 The Square, Temple Quay, Bristol BS1 6EB

Defra cannot provide advice on individual circumstances and, as with all matters relating to easements for vehicular access, interested parties should seek independent expert advice.

## Greasley Parish Council

Twenty-five years as a clerk to Greasley Parish Council, Steve Darken has died at the age of 55 following a serious illness. Mr Darken, born in 1948, was married with three children and one grandchild.

He had been involved in full time local government work all his life and was first employed by Chingford Borough Council in 1964. He also served at Waltham Forest BC before moving into Nottinghamshire in 1969, when he started employment at Broxtowe. He moved to Rushcliffe Borough Council in 1976 and remained with them until 1992, when he moved to Newark and Sherwood District Council, from where he retired last year.

He was a keen squash player and appeared in teams organised through Nottinghamshire County Council for many years. He was also closely interested in ice hockey for a period was a manager of an Under-16's team at Nottingham Panthers. On the football front, he was a supporter of Tottenham Hotspur.

His parish council work won him high praise from members at Greasley, with their council being one of the biggest 'parish' councils in Nottinghamshire, and boasting a Leisure Centre of its own, a project that Steve had been closely involved with right from the beginning.

Steve's death was almost 25 years to the day since he took his appointment at Greasley and he died the day after this year's Parish Meeting there.

The parish council, currently being 'clerked' by Andy Marshall, secretary of Moorgreen Show, is looking to provide a permanent memorial in memory of Mr Darken.

His funeral was held at Mansfield Crematorium, when it was standing room only with so many people attending. Donations in his memory are being given to the Marie Curie Cancer Care fund.

## Are you an Action Hero, Nature Lover or History Detective?

The historic Royal hunting forest of Sherwood in Nottinghamshire stretches over 25 miles long and up to 10 miles wide, offering visitors a world of opportunity to revel in blood pumping outdoor activities, to relax in tranquil landscapes of ancient forest, heath and farmland or to relish Sherwood's rich heritage.



Discover yourself in world famous Sherwood Forest, legendary home of Robin Hood. Whether you want a fun or relaxing day out, an exciting new web site has launched to help you discover the special 'Spirit of Sherwood' - a spirit of fun, the spirit of survival in the story of its living landscape and, of course, the spirit of Robin.

Using an interactive map, action heroes can find a surprising range of activities from riding horses to mountain bikes and even an aerial rope assault course. Nature lovers can locate a diverse range of Sherwood visitor sites and nature reserves and discover Sherwood's ecological significance as the home to some of Europe's greatest trees and heath land that is as rare as rainforest.

A unique and exciting feature is a virtual journey

through time, where history detectives can explore Sherwood through the Ages, seeing how the landscape looked and hearing the stories of Sherwood characters from the past.

The web site is just one of many exciting projects happening in historic Sherwood Forest through the Sherwood Forest Trust's exciting Heritage Lottery Funded, 'Sherwood Initiative'.

Discover the 'Spirit of Sherwood' yourself at [www.sherwoodforest.org.uk](http://www.sherwoodforest.org.uk)

For more information contact: Jayne Pugh - Sherwood Heritage Interpretation Co-ordinator  
Tel: 01623 758231 E-mail: [jayne.pugh@nottscc.gov.uk](mailto:jayne.pugh@nottscc.gov.uk)

### Gypsy and Travellers Fun Day

Kelham Hall 1 July 2004 10.00 am-3.00 pm

The aim of the day is to organise an information and activity day for the various Nottinghamshire Gypsy and Traveller communities specifically providing an opportunity to create links, access information and enable networking within a safe and fun environment.



Gypsies and Travellers are amongst the most socially excluded and marginalised ethnic minority communities in British Society. In an attempt to begin to redress this situation within

Nottinghamshire a number of organisations working within and alongside the Gypsy and Traveller communities in Nottingham City and Nottinghamshire have joined together to organise this information and fun day.

Gypsies and Travellers have a long history of travelling in and around Nottinghamshire. Main areas of settlement and over-wintering sites are around the Newark, Ollerton, Worksop, Mansfield and Nottingham city areas. Little information exists about these communities although it is generally accepted that the situation and experiences of these communities reflects the national situation. Nationally, it is

recognised by Government and major NGO's that the Gypsy and Traveller communities have severe difficulty in accessing culturally appropriate accommodation, health care, education and employment opportunities.

It is often the case that Gypsies and Travellers are viewed in relation to the problems they are alleged to create instead of the problems they actually face themselves. Often they are not consulted effectively and are unaware about policies and decisions which affect them.

Whilst there have in the past been small scale events aimed at inclusion work with the Gypsy and Traveller community, the partner organisations for this event view the 'information and fun day' as a starting point for future capacity building and consultative events across the city and county.

### Syerston Flower Festival



The Syerston Village Hall committee are holding a Flower Festival to celebrate the re-opening of their refurbished village hall from 10.00 am to 4.00 pm on 3 and 4 July 2004.

The theme is Country Weddings and there will be flower arrangements in the Church and a display of wedding dresses from the 1940s to 2000 in the Village Hall where cream teas will be served. Various stalls will be positioned along the grass verges between the 2 venues.



### Cropwell celebration gets VIPs

The Chairman of Cropwell Bishop Parish Council, Alan Wilson, is delighted that both the Duke of Rutland from Belvoir Castle and the Mayor of Rushcliffe, Cllr Brian Tansley, will be taking part in the Cropwell Bishop Flower Festival and Celebration in July.

The Duke will officially open the Festival and celebration on Saturday 3 July at St Giles Church at 10am with the Mayor in attendance. At the end of the festival will be a celebration service led by the Rev Andrew Wigram, again with the Mayor attending.

The festival takes place over the weekend of the 2–4 July 2004. Events include the flower festival, a garden trail, a live music concert each day, an open bell tower day and a full day of activities on the playing field such as welly wanging and a knockout tug 'o' war competition.

Local pubs in the area have been invited to send along teams of their strongest regulars and the emergency services have already promised their support by entering teams.

Part of the celebration is a hanging basket competition and the village houses will be festooned with flower displays. The village will be an explosion of colour over the festival weekend with the flower and garden theme.

Tickets are now on sale for three concerts: Duo Van Der Voort and Steenbrink on Friday, the open air music and fireworks on Saturday evening, and for the afternoon of music and humour on Sunday afternoon. This concert features the legendary Neville King, a well-known local entertainer. All tickets can be bought from The Cabin, Church Street, Cropwell Bishop.

Mr. Wilson said: "The weekend is shaping up to be an exciting time for Cropwell Bishop, with something arranged to appeal to every taste. We are proud of our village and are looking forward to showing it off during the festival."

### **Free Community Food Training Opportunity**

FIG is offering the following training to people in Nottingham County (City residents are not eligible for this particular course), and priority will be given to people from the following areas:



Newstead, Netherfield, Calverton, Eastwood, Stapleford, Chilwell and Beeston.

The course is FREE of charge, but numbers are limited, so please reserve your place as soon as possible. A free lunch will be provided at the event, and we can also help towards childcare costs.

### **Growing for the Terrified!!**

**Date: Thursday 15 July 2004**

**Time: 9.30 am–3.30 pm**

**Venue: Community Room, The Beeston Library, Foster Avenue, Beeston, Nottingham (a minutes walk from the bus station!)**

Are you or your group faced with a weedy patch of mud? Would you like to grow organic fruit, vegetables, herbs and salad? We'll show you how in our one-day introductory course for absolute beginners in the garden. The course will take you through the basics of food growing, from preparing the ground to when to harvest your first crop!

The course is open to all, and will be particularly useful for those groups or organisations with some spare land that you might like to put to use with your clients. For more information and an application form contact:

Alison Morris, Food Initiatives Group, c/o Groundwork Greater Nottingham, 35–37 St Mary's Gate, Nottingham, NG1 1PU. Tel: 0115 979 9227

### **A thousand years of farming ... in one weekend!**

This year's **National Archaeology Days** will be held on the weekend of the 17 and 18 July 2004. The County Council's Heritage Team will be heading for **Laxton** - the last working feudal village in the country. The team will be based at Cross Hill Farm in the centre of the historic village.



Large areas of Laxton are still farmed under the medieval 'open field system'. Visitors will be able

to see areas of farming landscape unchanged since medieval times; the earthworks of the county's largest motte and bailey castle; the picturesque eighteenth century village and its impressive Church of Saint Michael. The church will be open throughout the event.



On top of all this, we will have our usual range of archaeological activities for all ages - and some new ones too. There will be a hands-on demonstration of archaeological surveying within the outer bailey of the Castle, plus our new Finds Liaison Officer will be on hand on Sunday to examine visitors' historic finds.

This year's event will once again be held in partnership with the Newark and District Young Archaeologists' Club. It follows the success of last year's event at Newark Castle, which attracted 600 visitors.



For more information on this year's event, please contact James White on 0115 977 2160 or e-mail [james.white@nottsc.gov.uk](mailto:james.white@nottsc.gov.uk)

## Arts Network

The Carnival, Music and Environmental arts are the themes of this year's 8th Arts Network. Organised by Next Stage, the 3-day event (22-24 July) sees 10 professional artists coming together at Rufford Country Park for an arts workshop extravaganza.

Sessions taking place include carnival headdresses, junk band music, paper-making, telephone wire sculpture, hedgerow weaving, basket making, mask making, Samba, Tai Chi and natural bath treats, and whilst Thursday and Friday are reserved for group bookings, places are available on the Saturday for individuals.

For more information and/or to request a booking form, please contact Next Stage on: 01623 822052

## Music in Quiet Places

For a music in Quiet Places brochure Tel 01623 821383

## Robin's Return!

The Annual Robin Hood Festival - Nottinghamshire's biggest celebration of the life and times of its legendary hero - will be celebrating its 20<sup>th</sup> Anniversary this year and, thanks to support from local company, Hardy's and Hanson's, promises to be bigger and better than ever.



The Festival takes place at Sherwood Country Park and Visitor Centre, near the village of Edwinstowe, from Monday 2<sup>nd</sup> – Sunday 8<sup>th</sup> August. During the week-long extravaganza costumed entertainers - ranging from jugglers and jesters through strolling minstrels and street theatre performers, to archers and experts in medieval combat - will be on hand to make sure that there is lots of fun for all the family.

The event sees the return of many Festival favourites, including Alan a'Dale and Festa, Legends, Hat Trick Singing Plague



Victims, What a Palaver, and medieval physician Sir Ralph of Epperstone (pictured), as well as Zebediah the Ratcatcher and Grunal the Moneyer. Among the newcomers for 2004 will be medieval alchemist, Dr John Greene, madcap jester Peterkin the Fool, Sir Lupin of Pipwithers – a nine foot high knight in armour, and court jester Jack o'All-Trades, who is travelling from the USA to take part.

No Robin Hood Festival would be complete without archery and, down by the Major Oak, there will be a chance for budding Robin Hoods to test their prowess with the longbow. Costumed characters will demonstrate traditional medieval skills, and the ever popular jousting tournaments and falconry displays will include mid-week performances in addition to those taking place over the final weekend.

Sherwood Forest Visitor Centre can be found on the B6034, between the A6075 and the A616. Entry to the Festival is free, although there is a small charge for some of the events. Parking costs £1.50 per car, but is free for coaches and minibuses with more than twelve seats as well as disabled badge holders.

For a copy of the free Festival programme call the brochure hotline on 01623 824317

## Opening of the Sure Start Centre Blidworth

A fantastic day was had on the 12 March with the opening of the new centre. Even though it rained, it was a brilliant turn out with around 140 people attending. It was a fun and enjoyable day with a lovely atmosphere thanks to the support of the Robert Jones School Council who worked very hard on the day. There was fun



activities for the children including face painting, biscuit making and 'Sparkle the Entertainer'. The centre was officially opened by local MP, Paddy Tipping and a Blidworth parent, Maria Key with her son Liam. Other speakers were Celia Lassiter, County Councillors M Storey, and R Strauther and Tony Richardson.

Thanks to all who made the day such a success.

Various activities are already taking place at the centre so if you would like to find out more call the team on 01623 629203.

## East Leake Parish Plan

As part of its preparations to produce a Parish Plan, **East Leake Parish Council** asked the Local History Group to undertake a review of the village Conservation Area. This has resulted in proposals to extend the existing Conservation Area, centred around St Mary's Parish Church, and to have a new area to the east of the village redesignated. The plans were announced at the Annual Parish Meeting in May, with individual

notifications being delivered to properties that would be directly affected. A full consultation is now underway before formal application is made to Rushcliffe Borough Council.

## Willoughby on the Wolds news

The future of playing facilities for **Willoughby on the Wolds** should be secure - thanks to Nottinghamshire County Council - a special parish council meeting has been told.

Land off Field Farm Close which the parish was going to bid for at a public auction has been bought in a private deal between the owners, David Wilson Homes, and the County Council.

The County have told the parish council they proceeded with the purchase of the site - some 6 acres in all - to safeguard future educational needs in the village. Currently the village and the school make use of a piece of land provided for them by Mr Walter Skinner, but future use of it has never been assured.

Parish chairman Councillor Richard Illsley outlined the latest position to members and some 40 parishioners who attended the special meeting and said Nottinghamshire County Council had purchased land at Field Farm Close and therefore a planned auction was cancelled.

He said there had been a magnificent response to the appeal for funds to help the parish buy the site and he was happy to make known the gratitude of the parish council to them for this support. While the money would no longer be needed in respect of purchase of the land, the future use of the site was not yet totally confirmed, and there was to be a meeting between himself and Councillor Lamb and the County Council to discuss the future use of the site. He said the response from the village was such that a sensible bid could have been put at the auction that had been scheduled to take place.

The chairman said the village was grateful for the action of Mr Walter Skinner in making a site

available for the village playground and playing field over a period of many years, used by both parishioners and the village school, and he was pleased to make official recognition of this. He said the village owed him an enormous debt of gratitude. He presented Mr Skinner with two framed photographs, one taken recently and showing all the pupils currently attending there, and one taken in 1934, and on which Mr Skinner himself was shown as a schoolboy. Mr Skinner responded and said he had been happy to assist the village and was pleased his action had helped.

## North East Bassetlaw Forum

The North East Bassetlaw Forum is a new local area structure covering the very top of the County. The parishes of **Misterton, Everton, Gringley, West Stockwith, Walkeringham, Beckingham and Misson** have all been invited to attend along with local community groups.



The Forum will not conflict with the very important and legitimate role of the parish councils but will address common issues through a partnership approach. The needs of the wider area will be articulated which will enable service providers to have closer contact with the local communities they serve.

North East Bassetlaw Forum will meet quarterly and is being supported by both the District and County Council. Some of the issues that have already been raised by the Forum include new housing developments and their associated infrastructure such as schools and health provision, Broadband and the new Robin Hood Airport which will have considerable impact on the area.

To find out more about the North East Bassetlaw Forum, please contact:  
Nicola Simpson on 01909 576111

## Woodland trail opens at Rushcliffe Country Park



The first woodland trail - suitable for wheelchair users - has opened at Rushcliffe Country Park near Asher Lane, Ruddington, giving people the opportunity to get closer to nature. The community woodland is known as Gibbies Wood - after Arthur Gibson - an 18th century land-worker who dug out dykes and ditches in the area. There's also a local stream called Gibbies Brook which flows underneath the country park and joins the Fairham Brook.

Prior to the official opening, Friends of Rushcliffe Country Park, the junior Wildlife Watch group and volunteers from Rushcliffe Resource Centre will tidy up the path in the wood and plant wildflowers and bulbs. Four sculptures have already been placed in the wood along the circular walk - a squirrel up a tree, an otter eating a fish, a barn owl and a mythological creature called The Green Man - and others will soon follow including a ladybird and a frog on a lily pond. The sculptures were created at a workshop in the park last summer and more workshops are planned for this summer.

Hem Headworth, ranger, said: "The project has been made possible by grants from the Lottery, British Trust for Conservation Volunteers, Notts Next Stage and the Borough Council. We are opening up the area to give people the experience of walking in a young woodland and to view different types of wildlife first-hand. The woodland was originally planted by local residents in 1990 and is home to speckled wood butterflies, foxes, small mammals, green woodpeckers and numerous songbirds. It is deciduous woodland featuring trees such as willow, cherry, ash and black poplar. There is a 300-metre circular wheelchair accessible path and a further 200-metre informal path."

The park is home to various athletics events throughout the year - the 10K run in March, primary schools cross country events and Rushcliffe Youth Games orienteering in the summer, as well as being very popular with walkers, cyclists and families who visit the excellent play area.

## D H Lawrence Festival

The D H Lawrence Festival to celebrate his life and works - both as writer and artist takes place in Eastwood from Saturday 3 July until Thursday 31 August 2004.

## What's on in Rushcliffe

### Outdoor Theatre The Comedy of Errors

Wednesday 14 July 7.30 pm

Rushcliffe Country Park, Mere Way, Ruddington  
Tickets £5.00-£8.00 Box Office 01509 638000 or  
[www.ticketweb.co.uk](http://www.ticketweb.co.uk)

Proceeds in aid of [Rainbows Children's Hospice](#)

Shakespeare's comedy gem will bring tears of joy to your eyes. In a small town, an average day becomes extraordinary as a breakneck farce of mistaken identity and chaos unfolds.

Heartbreak Productions, the UK's premier professional open-air touring company, is delighted to present their hilarious yet thought-provoking interpretation of Shakespeare's extraordinary farce, "The Comedy of Errors."

### Robin Hood and The Sherwood Experience

An outdoor family friendly show full of action, adventure, puppetry, music, drama and fun.

Many years have passed since Robin Hood lived as an outlaw in Sherwood Forest. The Merry Men have departed and Main Marian is no longer a Maid! Yet again, tyranny and injustice are spreading through the country. Sheriff Enterprises have a moneymaking scheme and they'll not let anything or anyone stand in their way.

So bring your tuck box and feast with the outlaws, remember a blanket and whatever gold you possess, to help Robin save the greenwood before it's too late.

**Friday 2 July 7 pm**

Bridgford Park, Bridgford Road, West Bridgford  
Free entry

**Saturday 3 July 6 pm**

Cropwell Bishop Primary School, Stockwell Lane,  
Cropwell Bishop  
Entry with Cropwell Village Festival programme

### Family Events

#### Lark in the Park

A fun filled day of activities for children celebrating National Play Day. Live music, sports, arts and crafts, bouncy castles, shows and competitions and more! Bring your teddy dressed as a shopkeeper to the information stand by 1.30pm for judging in the Best Dressed Teddy competition.

**Wednesday 4 August 10 am-4 pm**

Bridgford Park, West Bridgford. Free car park available in Bridge Field, Bridgford Road

### Urban Arts Showcase

**Saturday 18 September 2 pm-10 pm**

Rushcliffe Country Park, Ruddington, Free Entry

A showcase of the best in contemporary urban art for young people, featuring street dance, live DJs, local bands, skateboard competition, spray art workshops and the premier performance of 'Down the Pan' a specially commissioned comedy/drama by Rushcliffe Youth Theatre Group.

### Rushcliffe Kite Festival

**Sunday 19 September 10 am-5 pm**

Rushcliffe Country Park, Ruddington, Free Entry

From giant stunt kites and power buggies to handmade children's designs, there is something for all to enjoy when Rushcliffe Country Park hosts its popular annual kite celebration. There will be kite flying demonstrations and workshops throughout the day, plus fantastic children's entertainment and the return of the Green Picnic environmental fair. Special guest Thomas the Tank Engine will be making a special stop to offer visitors free rides around the park!

10.30 am Family Church Service

12.00 pm Live folk music from East of Ealing  
Original and dynamic, an East of Ealing concert swiftly becomes a world party. A roots rocking four piece that has the crowds up and bopping from the word go.

2.00 pm Jazz Picnic with The Yorkshire Stompers  
Trad jazz at its lively best, guaranteed to get your foot tapping. Bring along a picnic and a blanket and join us in the Big Top.

Rushcliffe Country Park is situated off the A60 between Nottingham and Loughborough. Blue Badge holders only will be permitted to park in Rushcliffe Country Park official car park. Public parking facilities at Mere Way Business Park. For information on public transport telephone Travel Line 0870 608 2608. For other access information and enquires please telephone Rushcliffe Borough Council 0115 981 9911 or email [arts@rushcliffe.gov.uk](mailto:arts@rushcliffe.gov.uk)

## Tackling anti-social behaviour

Graffiti, litter, fly-posting, excess noise and intimidating gatherings of young people in public places are all anti-social behaviour issues of local concern. In Rushcliffe, the Borough Council is planning a major crackdown on anti-social behaviour - together with a range of measures to divert young people's energies into more constructive activities.

And to show it means business, the Council has employed an anti-social behaviour co-ordinator to co-ordinate its attack. Anne-Marie Ainger will work with the police, the County Council and the Crime and Disorder Reduction Partnership to try to make existing services more effective. The Home Office has given the Partnership funding for this post.

She said: "We want to stamp out the distress to Rushcliffe residents caused by a small minority of young people, but tougher punishments are not the only answer. The police have new powers to disperse gangs of youths - but it is vital that we also provide young people with more constructive activities, such as places to hang out, a greater range of leisure activities and other events. A new tool is the Anti-social Behaviour Order which can be issued to control the most serious and persistent offenders - and if the order is broken, this can lead to a prison sentence."

A big part of Anne-Marie's role will be going out and talking to young people to find out what they think should be done to make their communities cleaner and safer. She says the process of problem solving is 'like a wheel': "First you have to identify what the problem is, then you have to find a solution, and then (most importantly) you have to monitor the progress of your schemes to find out what works, what doesn't work and what needs to change. Anti-social behaviour is an all-embracing term covering many issues which affect people's quality of life. These include abandoned cars which make an area look run-down and encourage crime. We need to stop noisy neighbours or people who make others' lives a nightmare by threatening behaviour and by being a general nuisance. I will be working very hard to ensure the Council and its partners do all they can to create a more peaceful and crime free Rushcliffe."

Source: Rushcliffe Borough Council

## NALC Grant

The Nottinghamshire Association of Local Councils has been pleased to receive a grant of £500 from Nottinghamshire County Council from its local

community grant budget via County Councillor Andy Stewart.

This money will be put towards the purchase of a laptop computer and projector, which will be used to enhance our training events.

The Nottinghamshire Association is most grateful for this generous grant, and is confident that members will benefit greatly from the use of more up-to-date equipment.

## MASH Hosts Needed!

MASH (Mobile Advisory Services for Young Homeless) a registered charity aims to identify and tackle young people's housing needs in Nottinghamshire. It works to ensure that advice, accommodation and counselling services are available in rural and semi urban areas to slow the drift to towns and cities, leaving our communities empty for the next generation.



The Lodging Scheme intends to support young homeless people for a short period while advice and accommodation services work together to resolve their housing crisis. Initially, the project will operate in Bassetlaw and Gedling, intending to widen the scheme as funding opportunities become available. It is recognised that many young people have access to accommodation with friends and relatives in their immediate area. If the Host can be supported to maintain this offer of accommodation the young person is more likely to maintain local links and this has important implications for social inclusion in its broadest sense.

Young people who cannot remain in the local area may lose contact with friends and family and find it difficult to continue with their education, training or employment. This will be particularly the case in areas where transport links may be poor and the nearest formal accommodation provision be some miles distant.

The Lodging Scheme aims to support young people in housing crisis through the provision of short term accommodation and referrals to accommodation providers, welfare rights advice, health services and education and training providers.

We are currently seeking volunteer Hosts, within the Gedling and Bassetlaw areas, who would be willing to accept young people into their home for a maximum period of 14 nights. You do not have to be experienced

with working with young people but you will have to meet the Minimum Standards. We can provide training, support and some expenses.

If you do not think that you can be a Host but would still be interested in helping there are opportunities for volunteers to help with other tasks within the project.

### What are the Minimum Standards to be a Host?

- Your accommodation should be secure, safe and warm
  - There should be a private room for the Lodger
  - You will need to provide bed and storage space within the Lodger's room
  - Meals (if provided) should be prepared hygienically
  - The accommodation should be heated
- There should be access to all household facilities eg washing machine, hot water etc.

Contact: Be McCarroll – MASH Lodgings Co-ordinator – Notts RCC, Tel: 01623 727600 E-mail: [bmccarroll@nottsrrc.org.uk](mailto:bmccarroll@nottsrrc.org.uk)

### First Soil Action Plan for England

Plans for how government will work with farmers, planners, builders and others to protect and improve England's soils was published in May 2004.



The First Soil Action Plan for England sets out a 3-year programme designed to ensure that soil will be used and looked after in ways that get the best out of a vital natural resource.

The Plan's aims include:

- soil should be looked after with a view both to short-term needs and the interests of future generations
- regulation, legislation and policy will provide appropriate protection of soil as an irreplaceable natural resource and empower and encourage people to manage it properly
- a better understanding of, and access to, information on the state of our soils and the physical, chemical and biological processes which operate on and within them.

The Plan includes a planned programme to boost education and awareness of soil issues, new guidance to protect soils throughout the planning process and work to develop and provide better access to information on soils.

Defra's range of environmental standards for farmers

claiming CAP payments will include requirements to reduce erosion and maintain soil structure. There are also proposed measures to protect soils under the new Environmental Stewardship Scheme.

Also published was an Environment Agency consultation on soil, the first step towards developing a strategy for protecting soils which will feed into the Action Plan.

Defra will report on progress in November 2004, with further reports annually.

The Soil Action Plan can be viewed at <http://www.defra.gov.uk/environment/landliability/soil/actionplan.htm>

The Environment Agency consultation Soil, The Hidden Resource can be viewed at [www.environment-agency.gov.uk/soilconsultation](http://www.environment-agency.gov.uk/soilconsultation)

### Young Witness Service

Victim Support's Young Witness Service began working with young witnesses in September last year. So far, 80 cases have been referred to us. A police officer said this about the service:



*"XXXX received considerable support from [Volunteer] who worked with him at home to give him an understanding of how the Court system worked and how to give evidence. This gave the boy confidence to attend Court ... the boy was able to withstand considerable cross examination ... he made an impressive witness for a child of that age [9]. I have no doubt that this was as a direct result of the work that the Young Witness Service did".*

We then contact the family and arrange to visit them to carry out the preparation sessions - the heart of the service - which take place in the child's home. During these sessions, the YWS volunteer and the child explore issues such as:

- confidence building
- stress reduction
- feelings and emotions
- court jargon.

The intention is to fully prepare the child and help them feel more confident about going to Court.

We also arrange and attend a pre-trial court familiarisation visit with the young witness and their parent/carer.

On the day of the trial, we support the Young Witnesses before and after they give evidence. About a week later, the volunteer makes one final visit to address any concerns that the family may have. We also speak to the child about the service they received and ask them if they think we could do anything better or differently.

All volunteers receive 4 days Witness Service training and 3 days specialised training including Child Protection issues. The volunteers are also thoroughly vetted. Enhanced CRB checks are carried out and references followed up.

Referrals are received at our office, 15 Wheelergate, Nottingham NG1 2NA; tel: 0115 852 4285/6 fax: 0115 852 4157 email: [ywitness@vsnotts.org](mailto:ywitness@vsnotts.org)

## Village Connections

The Village Connections Travel Club is a service for people who live and work in the MedenValley. We advise people on available transport, and work to improve access to services, leisure and employment. Travel Club sessions have been delivered regularly in towns and villages of the MedenValley. The sessions provide a focus for travel needs, and demonstrate journey planning on the internet.

Queries often deal with difficulties people find in accessing timetables; although they are available in booklets and on the internet, people do not always know where to look. Changes to timetables cause uncertainty, and we are able to help customers and service providers alike. We are now holding targeted sessions in day centres, and are working with County One-Stop Shops, Job Centre Plus, and older peoples forums.

## Feasibility Study -Integrated Transport Scheme

Village Connections has now been merged with the Alliance Community Transport project, which means we can look at integrated solutions across the MedenValley. Gaps in Community Transport provision are being considered, along with the use of taxis to solve access problems in the area.

A partnership approach is being developed for the scheme, for which we have provisional agreement from both Derbyshire and Nottinghamshire County Councils. The District Councils, Local Strategic Partnerships, taxi operators and forums and community transport organisations are all advising the project.

A Feasibility Study was carried out in April 2004 by Morgan Tucker Associates of Newark. During the summer, we will be consulting with the stakeholders and

identifying funding for a Meden-wide scheme.

For further Information please contact Wendy Honeyman-Smith or Austin Booth at Nottinghamshire Rural Community Council on 01623 727607 or visit the website at: [www.villageconnections.org.uk](http://www.villageconnections.org.uk)

## County Substance Use Policy Launched in Mansfield

The need to have clear advice for staff about how to handle situations relating to illegal or dangerous substances has been addressed by the U & S Policy launched across the County at an event in Mansfield in May. The event was run by and for children and young people (with some help from the Drug and Alcohol Action Team) and featured some live music as well as football, face painting and rapping.

The U & S Policy (derived from this policy being about **you** and **substances**) has been adopted by Nottinghamshire County Council, the Nottinghamshire County Drug & Alcohol Action Team and all the partners involved in this work. Its full title is The Children and Young People Substance Use Policy.

The policy will ensure that all people working with children and young people know what to do when situations arise concerning drugs, alcohol, tobacco and other potentially dangerous substances like aerosols. It will deliver a consistency of approach and make sure staff are not putting themselves at risk from stepping outside the law.

A typical scenario could involve a youth worker confiscating some cannabis from a young person at a youth club.

What should the youth worker do now?

- Should s/he throw the cannabis away?
- Or ring the police?
- Or take the cannabis to the police?
- And what happens if the police stop the worker in their car for a failed brake light on the way home and find the cannabis in the car?

All these questions (and many others) are answered in the policy.

Substance use is a big problem in many of our communities and this document will help protect staff working with children and young people. It will make sure that everyone is clear about the law on drugs and alcohol and that every protection is given to children and young people in situations which could be dangerous to them. Training and briefings for all relevant staff is now underway.

For more information contact Leah Sareen on 0115 977 4427 or Claire Bowler at the Drug Alcohol Action Team on 01623 414114 ext 6918

## Notts' Century

Penny Mallory (the first woman to drive a world rally car and presenter on Channel Four's long running TV series, Driven) joined in the recent 'century' celebrations at County Hall with employees recruited through New Deal. Penny shared her inspirational story to show there is no limit to what you can achieve with will power and commitment.

The Council as the biggest New Deal employer in the region has successfully recruited over 100 New Deal employees. This event celebrated the successes and achievements of the individuals involved and gave thanks to managers and partners for their commitment to providing quality opportunities for unemployed people.

New Deal is a government scheme run nationally by Jobcentre Plus. It is aimed at providing unemployed people with the support and skills they need to find and retain employment. The Bridge to Work team at County Hall identifies suitable vacancies to be advertised exclusively for New Deal and supports unemployed people through the recruitment process and gives post employment support once they are in work.

Cabinet Member for Economic Development, Councillor Chris Winterton, said "It is great to be celebrating the success of New Deal, we have recruited some excellent people who have gone on to do a great job for the County Council. We are keen to maintain our approach and we are now working alongside the District and Borough Councils to employ 200 people through New Deal over the next 3 years."

## Stop Promoting Monster Alien Plants

Nature Conservation Minister, Ben Bradshaw, has called on garden centres and gardening programmes to stop promoting non-native invasive plants that are threatening Britain's landscape.

Visiting the "Weeds of Mass Domination" stand at the Chelsea Flower Show, Mr Bradshaw witnessed the devastation being caused by plants like Japanese knotweed, Himalayan balsam, Spanish blue bells and Parrot's Feather in many parts of Britain.

"The public are still being encouraged to buy plants that are disastrous for our biodiversity," the Minister said. At the stand, run by the Cornwall Knotweed Forum, Mr

Bradshaw was shown evidence of non native invasive species still being sold by garden centres and promoted on TV.



When plants are grown away from their natural habitat the checks and balances that nature provides can be missing, enabling them to grow uncontrolled. If they are not caught in time they can threaten native species and transform ecosystems.

The Forum's stand had a display showing a corn field 200 years ago with its indigenous meadow, pond and marsh plants next to the same plot today following the dumping of garden waste that rooted and overpowered the previous planting. The 1804/2004 theme reflects the bi-centenary celebrations of the Royal Horticultural Society at this year's Chelsea Flower Show.

It is illegal to plant or cause some non native invasive plants to grow in the wild. DEFRA is currently working with representatives of the horticultural sector to draw up a voluntary code of practice for the industry. But the Minister said he would not rule out import and sales bans of some species if they continued to be traded.

Defra is contributing to a four year research project into the natural control of Japanese knotweed. The cost of a national Japanese knotweed eradication programme has been estimated at approximately £1.56 billion using current techniques, which would not be realistic in practical or financial terms. This study will undertake the necessary research to establish whether natural control methods are feasible for the long-term, sustainable management of Japanese knotweed in the UK.

## The NRCC Group

In 2002 the Nottinghamshire Rural Community Council began income generating activity through the launch of a trading arm. Registered as NottsRCC Ltd, and marketed as the NRCC group, the company was developed in response to the need for a guaranteed flow of income to the parent charity. As such it forms part of a raft of initiatives designed to ensure the long-term sustainability of the RCC, in concert with parallel actions relating to the Infrastructure and Haskins reviews, both of which promise radical reform of voluntary sector funding. Profits made by the company are covenanted to the charity at the end of each year's trading.

Since its inception in 2002, the company has developed

pace and now has several major strands delivering a variety of services. The company specialises in design, ICT, training, research, consultancy and the production of communications materials. With staff experience stretching back many years prior to the launch of the company, the NRCC Group today presents an impressive package of support and advisory services.

This rapid growth has to date resulted in the establishment of four key areas of activity; each branded and marketed separately yet capable of packaging their services for larger contracts. For example, many clients using our design services return for other services such as web site design and ICT support. The four major services are:

**Blue Cat** is the trading name of the design arm of the company, and helps client organisations and businesses establish a stronger presence through a more consistent communications strategy. Blue Cat offers guidance in all aspects of design, and works with clients from initial concepts to finished product. Blue Cat to date has produced products ranging from single leaflets and posters through to full organisational makeovers.

**Virtual Village** is the company's ICT arm and offers three main services. These are web site design and hosting, hardware and software technical support and bespoke applications such as customised database design. Technical staff are all recruited from the original RCC Virtual Village project, so between them boast many years of experience.

**Advance Development** is a relatively new addition to the company. Introduced in 2003, Advance provides customised training in a wide variety of subjects, and is usually delivered in or close to the client's location. The company's extensive rural contacts mean that distance from major towns and cities and from larger training centres is not a problem.

Through Advance the company will shortly register as a Learndirect 'medium' centre supporting smaller link centres wishing to offer online learning. Also in the pipeline are registration as a Microsoft Office Specialist Academy and as a Basic Skills provider, opening the way for specialist courses delivered at rural Community Resource Centres (CRC) across the county. To support the latter Advance is also developing a formal CRC consortium or 'distributed college', capable of tendering in its own right for large scale training contracts with enabling agencies such as the Learning and Skills Council.

**Evolve Consultants** provides a research, consultancy and funding service that impacts on policy making at county, regional and national levels. Major assets for

Evolve are the RCC's wide range of contacts, providing access to key influencers and decision makers, and our dispersed pool of associate consultants able to provide additional capacity during periods of intense activity or when completing larger contracts.

## Hockerton Housing Project (HHP)

Since the inception of HHP the occupants have worked to reduce the use of fossil fuelled vehicles by its members by restricting families' use of fossil fuelled vehicles, purchasing an electric car for community use, encouraging car sharing and promoting use of alternative forms of transport. As part of the development towards becoming more of a sustainable resource centre we are expecting more people to visit HHP to participate in tours, educational and social events. We would like to encourage more visitors to reduce their fossil fuel consumption travelling to and from HHP by considering more sustainable options. You can find details on how to travel to HHP more sustainably by looking at the GUIDED TOUR section of our website.

More recently we have completed a new bike shelter near the entrance of the site with financial support from Nottinghamshire County Council. Made principally from green oak and with seating outside, it provides a pleasant resting point for cyclists and others before starting a tour. HHP will be hosting two rural ride events on 18 July for local cyclists. Please contact HHP for further information - E-mail: [hhp@hockerton.demon.co.uk](mailto:hhp@hockerton.demon.co.uk) Website: [www.hockerton.demon.co.uk](http://www.hockerton.demon.co.uk)



## Playschemes still going strong

After 32 years, the Broxtowe Borough Council funded playschemes are as popular as ever, leading the way in Nottinghamshire in providing an extensive programme of free play opportunities throughout the summer holidays. All attendees are required to pre-register to ensure as many young people as possible have the opportunity to attend.

Registration forms are available from Broxtowe Borough Council on 0115 917 3481 or e-mail [kaye.needham@broxtowe.gov.uk](mailto:kaye.needham@broxtowe.gov.uk). Completed registration forms must be taken to a registration session.

## Notts RCC Annual General Meeting

Notice has been given to hold the 80th Annual General Meeting of Nottinghamshire Rural Community Council at Newstead Miners Welfare on Tuesday 19 October 2004 at 7.00 pm.

## Walk and Talk Programme

The Walk and Talk Programme of Walks continues through July, August and September. For more information contact the Walk and Talk Co-ordinator at Kimberley Leisure Centre on 0225 927 3366

## Fly Tipping

Illegal dumping of hazardous waste, or fly tipping as it is known, could become a huge problem. An EU ban comes into effect on 16 July banning wastes such as asbestos, acids and pesticides from landfill sites. The number of landfill sites will be greatly reduced.

## Tipping - it's a waste



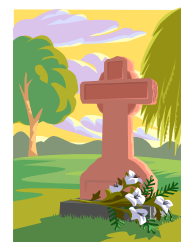
Browtove Borough Council has joined DEFRA's national initiative 'Flycapture'.

Fly tipping:

- is a criminal offence - maximum fine of £20,000 and/or 6 months in prison
- affects the quality of life.

Broxtowe are advising people not to take risks if seeing anyone using a public highway or public land for disposal of waste. Take what information you can ie registered number of vehicle, make, model, colour and the location and then pass the information by telephoning 0115 917 3182.

## War Memorials



English Heritage and the Wolfson Foundation in association with Friends of War Memorials are offering grants for the repair and conservation of free-standing war memorials in England, to support the care and preservation of war memorials to a high standard and to prevent the decay of this important part of built heritage. Project costs including: urgent and necessary repairs (including structural stabilisation); work to improve the legibility of eroded inscriptions; cleaning; reinstatement of lost elements.

Applications are up to 50% of the eligible costs or £10,000, whichever is the lesser with the remaining project costs from own resources.

For more information and an application pack visit the website: [www.english-heritage.co.uk](http://www.english-heritage.co.uk)

## Come Dancing

New members are always welcome at the Nottingham Branch of the Royal Scottish Country Dance Society. We meet weekly on Wednesday evenings, 7.10 pm to 9.45 pm, from the beginning of September to mid-May, at the Bluecoat School on Aspley Lane, Nottingham. Group teaching is given in the first half of the evening and, after an interval for tea and biscuits there is social dancing. Come and meet us on a Wednesday evening, no previous experience necessary, and your first evening is FREE!

If you would like to know more, please contact Rhona and David Page on 0115 981 3215 or e-mail at: [DPage60051@aol.com](mailto:DPage60051@aol.com)

## Welcome



Welcome to the following new clerks:

Mr A Marshall, Acting Clerk to Greasley Parish Council  
Mrs J Cass, Clerk to Thrumpton Parish Meeting

## Useful Information:

County Council Waste hotline:  
0115 977 1019  
Crimestoppers: 0800 555 111  
Domestic Violence: 0808 800 0340  
Floodline: 0845 988 1188  
Report Racial Abuse:  
0800 085 8511

## City and County websites:

[www.nottinghamcity.gov.uk](http://www.nottinghamcity.gov.uk)  
[www.nottinghamshire.gov.uk](http://www.nottinghamshire.gov.uk)

## District Council websites:

[www.ashfield-dc.gov.uk](http://www.ashfield-dc.gov.uk)  
[www.bassetlaw.gov.uk](http://www.bassetlaw.gov.uk)  
[www.broxtowe.gov.uk](http://www.broxtowe.gov.uk)  
[www.gedling.gov.uk](http://www.gedling.gov.uk)  
[www.mansfield.gov.uk](http://www.mansfield.gov.uk)  
[www.newark-sherwooddc.gov.uk](http://www.newark-sherwooddc.gov.uk)  
[www.rushcliffe.gov.uk](http://www.rushcliffe.gov.uk)

## Other useful websites:

[www.countrysideagency.gov.uk](http://www.countrysideagency.gov.uk)  
[www.defra.gov.uk](http://www.defra.gov.uk)  
[www.emda.org.uk](http://www.emda.org.uk)  
[www.environment-agency.gov.uk](http://www.environment-agency.gov.uk)  
[www.odpm.gov.uk](http://www.odpm.gov.uk)

Originally 30 June was the cut-off date for obtaining a horse passport. While encouraging equine owners to meet the deadline Defra has responded to the advice of horse organisations by allowing more time before enforcement will commence. Owners will therefore have more time to comply with the new legal requirement. The Scottish Executive, Welsh Assembly Government and Northern Ireland Department for Agriculture and Rural Development have agreed with Defra that restrictions on horses without passports will apply from the date of 28 February 2005, throughout the UK.

Three Nottinghamshire youngsters have won a national poster competition run by Show Racism the Red Card. The project is supported by the Communities and Partnerships Team, Nottinghamshire County Council, who co-ordinated the involvement of school children across the County.

### Rural Voice

Rural Voice, Nottinghamshire Rural Community Councils newsletter which is published 3 times a year is now available on tape. This method of accessing the publication which, contains information on all aspects of rural life, will be trialled for 3 issues. If you would like to listen to a tape of Rural Voice or would like any information about this service please contact Claire Kimpton at the Nottinghamshire RCC on 01623 727600 or by email: [ckimpton@nottsccc.org.uk](mailto:ckimpton@nottsccc.org.uk)

County Councillor Nellie Smedley is the new Chairman for the County Council. Councillor Smedley was also Chairman for the County Council in 1993.

Judging is about to start in this year's **Best Kept Village Competition**, organised by the Campaign to Protect Rural England (CPRE) and sponsored by Wilkinsons. Teams of judges will travel across the county, paying unannounced visits to the competing villages. Results will be announced in the middle of August and cheques, plaques and certificates will be presented in the autumn.

For more information contact Mrs V Gillespie, Notts CPRE Competition Organiser on 01636 813560

Two key objectives of the Local Transport Plan's overall transport strategy are to improve road safety and to encourage more cycling and walking, especially for short journeys. The full report can be found on the Nottinghamshire County council's website at: [www.nottinghamshire.gov.uk/roadsafetyplan.pdf](http://www.nottinghamshire.gov.uk/roadsafetyplan.pdf)

Broxtowe Borough Council has produced a leaflet for Bramcote and Stapleford Hills Public Open Spaces. The leaflet shows waymarked routes, a tree route, a walled garden as well as the famous Hemlock Stone.

Mansfield Museum and Art Gallery has recently been awarded £211,500 by The Heritage Lottery Fund for a new Environment Gallery which is expected to be launched in November.



## Your Newsletter

This newsletter is sent to **Town and Parish Councils/Meetings**, for distribution. Names and addresses are held on a database. I want mail to get to the right people without delay so please help by informing me of any changes as it is my responsibility to inform others within the authority who mail out to parish councils. Parish contacts information, the Code of Practice and this newsletter are on the authority's website at [www.nottinghamshire.gov.uk/parishcouncils.htm](http://www.nottinghamshire.gov.uk/parishcouncils.htm)

Please contact me if you have:

- Articles for Countylink
- information or an event during **October and November 2004** in your local parish
- Changes of Parish Clerks details
- requests for extra copies of Countylink
- A request for Countylink in other formats
- information/links/photograph you would like to add to your details on the Nottinghamshire County Council's website.

Barbara Worrall

## Your District Council Contacts:

Ashfield District Council, Public Relations  
01623 457004

Bassetlaw District Council, Public Relations  
01909 533726

Broxtowe Borough Council, Public Relations  
0115 917 3743

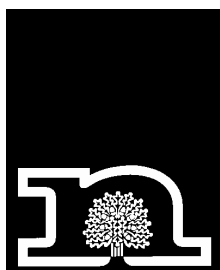
Gedling Borough Council, Public Relations  
0115 901 3801

Mansfield District Council, Public Relations  
01623 463021

Newark and Sherwood District Council  
Public Relations 01636 655255

Rushcliffe Borough Council, Public Relations  
0115 914 8555

## Contacting us:



E-mail: [barbara.worrall@nottsc.gov.uk](mailto:barbara.worrall@nottsc.gov.uk)

Phone: 0115 977 4085

Fax: 0115 977 3859

Post: Regeneration Division, Culture and Community Department,  
Nottinghamshire County Council, County Hall, West  
Bridgford, Nottingham NG2 7QP

Internet: [www.nottinghamshire.gov.uk/parishcouncils.htm](http://www.nottinghamshire.gov.uk/parishcouncils.htm)

**Deadline date for articles for the next issue is:  
17 September 2004**